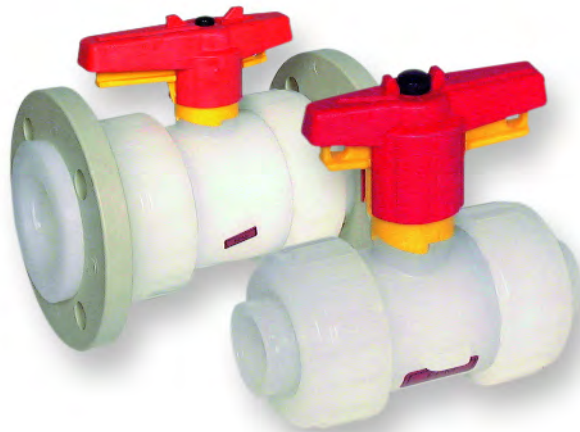
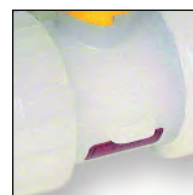


manual valves

Praher S4 Ball Valve



Lockable Handle



Tagging Point



Valve Bracket



Actuation

Materials

Body - PVDF
Ball Seat - PTFE
Seals - FPM

Sizes

3/8" - 4"/16mm - 110mm

Pressure Rating

3/8"/16mm to 2.1/2"/75mm - 16 bar
3"/90mm - 10 bar
4"/110mm - 6 bar

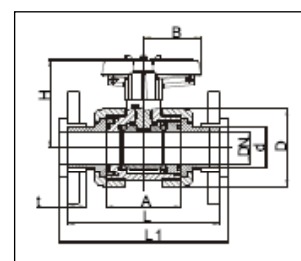
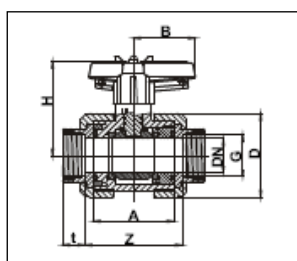
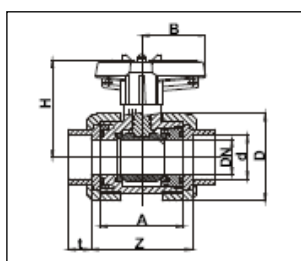
Connections

MM fusion sockets
MM fusion spigots
BSP female thread
Flanged PN10

Features

- Lockable Handle (Lock not supplied)
- True Union design for easy maintenance
- Full bore design
- Tagging point included
- Matched Valve bracket for panel mounting and retrofit actuation.
- Pneumatically and Electrically actuated versions available
- Silicone free on request

Valve Dimensions



d	16	20	25	32	40	50	63	75	90	110
DN	10	15	20	25	32	40	50	65	80	80
G	3/8"	1/2"	3/4"	1"	1 1/4"	1 1/2"	2"	2 1/2"	3	4
L	114.0	124.0	144.0	154.0	174.0	194.0	224.0	284.0	300.0	340.0
L1	120.0	130.0	150.0	160.0	180.0	200.0	230.0	290.0	310.0	350.0
A	62.0	62.0	69.0	73.0	83.0	94.0	108.0	133.0	160.0	160.0
Z	70.0	67.0	79.0	83.0	95.0	114.0	134.0	147.0	211.0	167.0
t	14.5	16.0	17.0	19.5	22.0	25.0	29.0	34.5	38.5	44.0
D	51.8	51.8	61.5	68.5	83.5	98.0	118.0	151.0	183.0	183.0
H	71.5	71.5	77.0	80.5	98.5	106.5	115.5	142.0	160.0	160.0
B	40.0	40.0	51.5	51.5	64.0	73.0	85.0	110.0	132.0	132.0
PN	16	16	16	16	16	16	16	16	10	6
Weight	0.25	0.25	0.38	0.49	0.81	1.22	1.91	3.82	6.43	6.43

Dimensions in mm

**PRAHER
VALVES**

Praher Type S4 Ball Valve

Description: In-line double union ball valve with lockable handle
Mounting: In any position
Maximum Fluid Pressure at 20°C: Sizes 16mm to 75mm - 16bar;
 Sizes 90mm - 10 bar; 110mm - 6 bar
Fluid Temperature Range: 0°C - 140°C
Construction:
Body: PVDF
Seals: FPM
Seats: PTFE
End Connections: Fusion sockets, fusion spigots,
 BSP Female Threaded, Flanged BS4504 EN1072 PN10
Option: Silicon-free



MM Fusion Sockets

FPM Seals PTFE Seats	16	12.1449	81.71
	20	12.1450	83.03
	25	12.1448	107.07
	32	12.1451	136.88
	40	12.1452	181.42
	50	12.1453	257.37
	63	12.1454	356.17
	75	12.1455	609.12
	90	12.1456	809.71
	110	12.2032	1199.07

MM Fusion Spigots

FPM Seals PTFE Seats	16	12.2259	81.71
	20	12.1491	83.03
	25	12.1492	107.07
	32	12.1493	136.88
	40	12.1494	181.42
	50	12.1495	257.37
	63	12.1496	356.17
	75	12.1497	609.12
	90	12.1498	809.71
	110	12.2012	1199.07

BSP Female Threaded

FPM Seals PTFE Seats	3/8	12.2093	87.48
	1/2	12.1482	88.94
	3/4	12.1483	114.75
	1	12.1484	145.28
	1 1/4	12.1485	191.00
	1 1/2	12.1486	270.64
	2	12.1487	374.62
	2 1/2	12.1488	684.34
	3	12.2349	1052.05

Flanged BS4504 PN10/16

FPM Seals PTFE Seats	1/2	12.2025	160.76
	3/4	12.2026	230.06
	1	12.2027	283.17
	1 1/4	12.2502	360.61
	1 1/2	12.2503	499.99
	2	12.2504	668.12
	2 1/2	12.2505	1126.80
	3	12.2506	1584.01

Praher Valve Bracket for Type S4 Ball Valves

- For actuator or control panel mounting
- Can be used to provide fixed point mounting to support

16	17.0279	29.49
20	17.0279	29.49
25	17.0280	31.58
32	17.0281	33.51
40	17.0228	35.74
50	17.0230	37.51
63	17.0232	39.76
75	17.0275	55.55
90	17.0282	62.10
110	17.0282	62.10



Valve shown with bracket

Praher Type S4 T & L-Port Ball Valve

Description: In-line horizontal T-port or L-port ball valve with lockable handle and union ends

Mounting: In any position

Maximum Fluid Pressure at 20°C: 16 bar

Fluid Temperature Range: 0°C - 140°C

Construction:

Body: PVDF

Seals: FPM

Seats: PTFE

End Connections: Fusion sockets or fusion spigots



T-Port Ball Valve

MM Fusion Sockets

	16	124918	200.58
FPM Seals	20	124922	214.60
PTFE Seats	25	125030	265.47
	32	124926	333.33
	40	125032	403.40
	50	124930	499.99
	63	124934	699.09

MM Fusion Spigots

	16	124920	200.58
FPM Seals	20	124924	214.60
PTFE Seats	25	125034	265.47
	32	124928	333.33
	40	125036	403.40
	50	124932	499.99
	63	124936	699.09

L-Port Ball Valve

MM Fusion Sockets

	16	124919	200.58
FPM Seals	20	124923	214.60
PTFE Seats	25	125031	265.47
	32	124927	333.33
	40	125033	403.40
	50	124931	499.99
	63	124935	699.09

MM Fusion Spigots

	16	124921	200.58
FPM Seals	20	124925	214.60
PTFE Seats	25	125035	265.47
	32	124929	333.33
	40	125037	403.40
	50	124933	499.99
	63	124937	699.09

Praher Type S4 Ball Valve with Actuator Adaptor Kit

FPM Seals

16	122.433	159.49
20	122.434	160.79
25	122.435	191.41
32	122.436	228.41
40	122.437	293.49
50	122.438	449.18
63	122.439	595.92
75	122.440	829.44
90	122.441	1078.27
110	122.442	1544.03

Prices on request for alternative end connections



Praher Laboratory/Sampling Ball Valve

Description: In-line ball valve for laboratory or sampling use

Mounting: In any position

Maximum Fluid Pressure at 20°C: 10 bar

Fluid Temperature Range: 0°C - 120°C

Construction:

Body: PVDF

Seals: FPM

Seats: PTFE

End Connections: 1/4" R or NPT Threaded; Hose Connection included



Valve with R/NPT Adaptor and Plug

R Male x Female	1/4	12.2459	26.10
NPT Male x Female	1/4	12.2460	27.72

Hose Nozzle

BSP Male	1/4	141.145	11.96
NPT Male	1/4	140.205	11.96

ASV Stubbe Gauge Guard

Description: Pressure gauge connector with isolating diaphragm

Mounting: In any position

Maximum Fluid Pressure at 20°C: 10 bar

Fluid Temperature Range: 0°C-120°C

Construction:

Body: PVDF

Diaphragm: PTFE (EPDM backed)

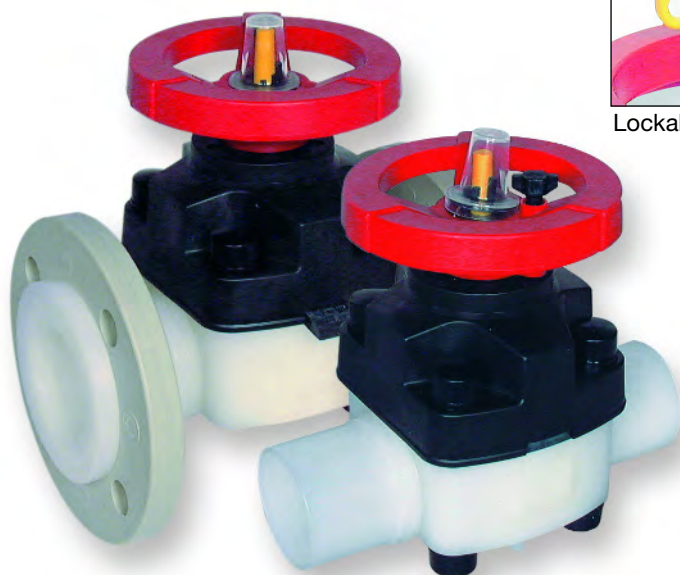
End Connections: Fusion Spigots, NPT Female Threaded



Please note: gauge not included.

25x1/4x1/4"	135535	115.56
32x1/2x1/2"	135538	115.56
1/4x1/4"	135541	121.00
1/2x1/2"	135544	121.00

Praher T4 Diaphragm Valve



Lockable Handle



Visual Position Indicator



Optional Valve Support Plates

General

Sealing material: EPDM / EPDM-PTFE / FPM

Body material: PVDF

Dimensions: DN 15/d 20 - DN125/d140

Operating Pressure

DN 15 / 1/2" - DN 125 / 5" 10 bar

Connections

PVDF union sockets 20mm-63mm

PVDF fusion spigots 20mm-110mm

Flanged PN10 20mm-140mm

Technical Specification

For example:

TYPE PRAHER, DIN 2403

PVDF Diaphragm valve T4 DN 15 d20

PVDF mm fusion spigot

Sealing material EPDM-PTFE

Safety gear wheel

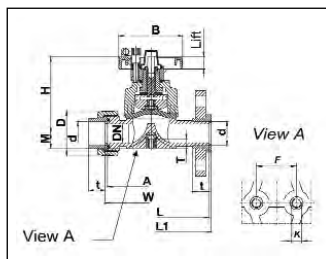
Max. Operating pressure 10 bar

Features

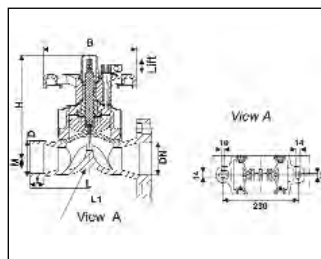
- Safety gear wheel
- Corrosion Resistant
- Maintenance free operation over a long working life
- Suitable for aggressive and dirty media
- Radial installation or removal
- Easy replacement of the diaphragms

Valve Dimensions

DN 15 - DN 50



DN 65 - DN 80



d	20	25	32	40	50	63	75	90	110	140
DN	15	20	25	32	40	50	65	80	100	125
G	1/2"	3/4"	1"	1 1/4"	1 1/2"	2"	2 1/2"	3"	4"	5"
M	16.5	16.5	20.1	31.5	31.5	38.6	25.0	25.0	25.0	25.0
H	100.0	100.0	107.0	144.0	144.0	170.0	260.0	260.0	330.0	330.0
B	86.0	86.0	86.0	136.0	136.0	136.0	234.0	234.0	234.0	234.0
F	24.5	24.5	24.5	43.5	43.5	43.5	-	-	-	-
Lift	9.0	9.0	11.0	22.0	22.0	28.0	35.0	35.0	45.0	45.0
K	M6	M6	M6	M8	M8	M8	-	-	-	-
L	124.0	144.0	154.0	174.0	194.0	224.0	284.0	300.0	340.0	-
L1	130.0	150.0	160.0	180.0	200.0	230.0	-	310.0	350.0	400.0
T	12.0	12.0	12.0	15.0	15.0	15.0	-	-	-	-
t	28.5	36.0	36.0	38.5	46.0	46.0	37.0	37.0	50.0	-
PN	10	10	10	10	10	10	10	10	10	10

Dimensions in mm

Praher Type T4 Diaphragm Valve

Description: In-line diaphragm valve with position indicator

Mounting: In any position

Maximum Fluid Pressure at 20°C: 10 bar

Fluid Temperature Range: 0°C - 120°C

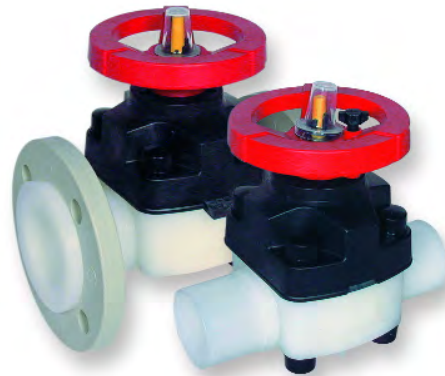
Construction:

Body: PVDF

Diaphragm: PTFE (EPDM backed), FPM or EPDM

End Connections: Union Sockets, Fusion Spigots, Flanged (on request)

Option: Silicon-free



MM Fusion Spigots

PTFE Diaphragm	Valve Size	Code	Price
	20	12.2798	179.19
	25	12.2799	191.73
	32	12.2800	222.71
	40	12.2801	331.12
	50	12.2802	363.56
	63	12.2803	474.17
	75	12.0184	1023.56
	90	12.0185	1296.41
	110	12.0917	1564.84

Flanged BS4504 PN10

PTFE Diaphragm	Valve Size	Code	Price
	1/2/20	12.0261	204.29
	3/4/25	12.0265	205.01
	1/32	12.0270	245.57
	1 1/4/40	12.0271	370.95
	1 1/2/50	12.0272	403.40
	2/63	12.0273	496.29
	2 1/2/75	12.0274	895.24
	3/90	12.0275	1536.81
	4/110	12.0921	1616.46
	5/140	12.0922	4201.91

MM Union Sockets

PTFE Diaphragm	Valve Size	Code	Price
	20	12.5074	216.80
	25	12.5075	224.18
	32	12.5076	256.63
	40	12.5077	399.69
	50	12.5078	442.48
	63	12.5079	600.27

Spare PTFE Diaphragm	Valve Size	Code	Price
	20	05.0473	44.06
	25	05.0473	44.06
	32	05.0474	49.43
	40	05.0475	61.35
	50	05.0475	61.35
	63	05.0476	69.41
	75	12.0918	338.05
	90	12.0918	338.05
	110	12.0919	387.19
	140	12.0919	387.19

Also available with EPDM or FPM diaphragms.
Please enquire for details.

Diaphragm Valve Mounting Plate

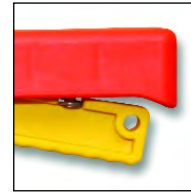
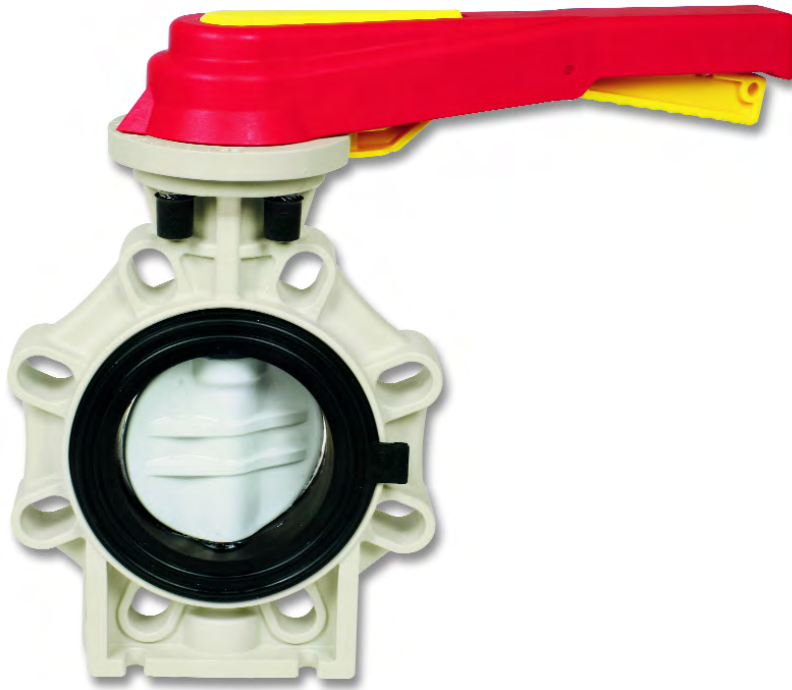
- Ensures clearance of union nut from mounting surface
- Complete with two fixing screws

Valve Size	Thickness (mm)	Code	Price
20	16.0	14.0103	5.51
25	23.0	14.0102	5.51
32	23.0	14.0102	5.51
40	18.5	14.0123	8.96
50	23.5	14.0109	8.96
63	23.5	14.0109	8.96



manual valves

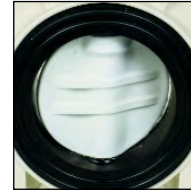
Praher K4 Butterfly Valve



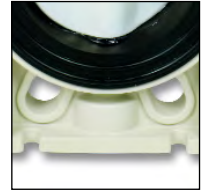
Locking Handle



Universal Drilling



PP-GF Body
PVDF disc



Support Lugs in
Base

Materials

Body - PP-GF
Disc - PVDF
Seals - FPM

Sizes

2 1/2"/75mm - 8"/225mm

Pressure Rating

PN10

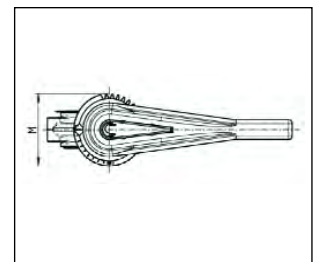
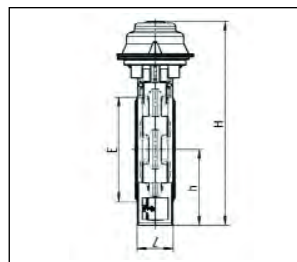
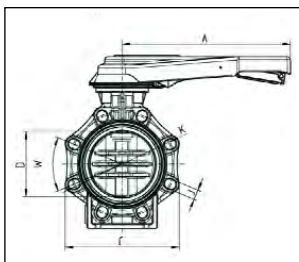
Connections

Between flanges, universally drilled

Features

- Only Body Seal and Disc in contact with media
- Double sealed shaft
- Valve support lugs in base
- Direct actuator mounting
- Low torque operation
- Multi-position Lockable Handle
- Manual or Gear operation
- All sizes PN10 rated
- Universal drilling - can be used with DIN, ANSI, BS and JIS flanges

Valve Dimensions



Size	2 1/2"/75	3"/90	4"/110	6"/160	8"/225
A	230	230	300	386	386
D	65	80	100	150	200
C	133	176	206	261	314
W	90°	45°	45°	45°	45°
J	19	19	19	23	23
K	127-145	146-160	175-190.5	234.5-241.3	290-298.5
H	285	292	322	396	458
h	100	100	115	147.5	175
E	98	116	146	196	251
M	114	114	114	150	150
Z	46	49	56	70	71
PN	10 bar	10 bar	10 bar	10 bar	10 bar

Dimensions in mm

Praher Type K4 Butterfly Valve

Description: Lug style butterfly valve with universal drilling for mounting between flanges. (DIN, ANSI & BS)

Construction:

Body: PP-GF

Disc: PVDF

Seals: FPM

Pressure rating: PN10

Size: 2¹/₂"/75mm - 8"/225mm



Lever Operated

FPM Seals

2 ¹ / ₂ "/75	12.5880	452.07
3"/90	12.5881	554.63
4"/110	12.5882	611.89
5"/140	12.8460	793.04
6"/160	12.5883	896.24
8"/225	12.5884	1216.31



Gear Operated

FPM Seals

2 ¹ / ₂ "/75	12.6030	663.20
3"/90	12.6031	765.55
4"/110	12.6032	812.70
5"/140	12.8765	on application
6"/160	12.6033	1102.06
8"/225	12.6034	1422.14

manual valves

Praher K4 Check Valve



Visual Position Indicator



Universal Drilling



85° Max Opening

Features

- Excellent Flow Rates
- Wide opening (85%)
- Low pressure drop
- Visual open-closed indicator
- Spring return
- All sizes PN10 rated
- Universal drilling - can be used with DIN, ANSI, BS and JIS flanges

Materials

Body - PVDF
Disc - PVDF
Seals - FPM

Sizes

2 1/2"/75mm - 10"/250mm

Pressure Rating

PN10

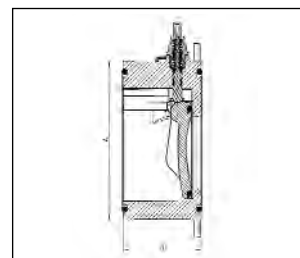
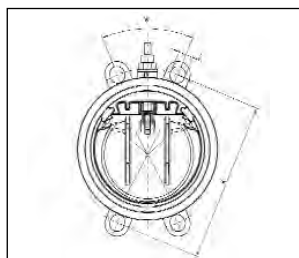
Connections

Between flanges, universally drilled

Tightening torque for flange connections

DN	65	80	100	150	200	250	300
Nm	15	18	20	40	55	60	65

Valve Dimensions



DN	A	B	C	K	W
65	115	63	20	139-145	90°
80	128	71	20	150-160	45°
100	155	80	20	175-191	45°
150	212	106	24	234-242	45°
200	264	140	24	290-299	45°
250	325	140	27	350-362	30°

Dimensions in mm

Praher Type K4 Check Valve

Description: Lug style check valve with universal drilling for mounting between flanges. (DIN, ANSI & BS)

Construction:

Body: PVDF

Seals: FPM

Pressure rating: PN10

Size: 2 1/2"/75mm - 10"/250mm

NEW



FPM Seals	2 1/2"/75	12.5853	495.15
	3"/90	12.5854A	576.42
	4"/110	12.5855A	690.99
	6"/160	12.5856	996.99
	8"/225	12.5857	1973.77
	10"/250	12.5858	3312.81

Kv Value Table		
Pressure Lost	1 bar	0.001 bar
DN 80	2958 l/min	94 l/min
DN 100	5633 l/min	178 l/min
DN 150	12466 l/min	394 l/min
DN 200	21166 l/min	699 l/min

Pressure loss based on maximum opening of 85%

Praher Type S4 Check (Non-Return) Valve

Description: In-line spring weighted cone check valve

Mounting: In any position

Maximum Fluid Pressure at 20°C: Sizes 16mm to 75mm - 16 bar;
 Sizes 90mm to 110mm - 10 bar

Fluid Temperature Range: 0°C - 120°C

Construction:

Body: PVDF

Seals: FPM

Spring: Stainless steel sleeved in PTFE

End Connections: Fusion sockets, fusion spigots or BSP Female Threaded



MM Fusion Sockets

FPM Seals

16	12.1658	121.39
20	12.1659	122.87
25	12.1660	154.86
32	12.1661	182.15
40	12.1662	266.23
50	12.1663	342.17
63	12.1664	460.16
75	12.1665	666.62
90	12.1666	877.53
110	12.2350	1225.62

MM Fusion Spigots

FPM Seals

16	12.1676	121.39
20	12.1677	122.87
25	12.1678	154.86
32	12.1679	182.15
40	12.1680	266.23
50	12.1681	342.17
63	12.1682	460.16
75	12.1683	666.62
90	12.1684	877.53
110	12.2351	1225.62

BSP Female Threaded

FPM Seals

3/8	12.1667	127.00
1/2	12.1668	128.47
3/4	12.1669	162.24
1	12.1670	190.26
1 1/4	12.1671	275.80
1 1/2	12.1672	355.44
2	12.1673	477.86
2 1/2	12.1674	669.01
3	12.1675	888.63

Need advice?

Our expert team are here to help.
 Call our freephone:

0800 975 79 71

Or from outside of the UK:
 +44 191 521 3111



Praher Type S4 Wafer Check Valve

Description: Wafer style flap check valve

Mounting: In any position, between flanges to BS4504 EN1072 PN10.

Optional spring return for mounting in horizontal position or for pulsating flow.

Maximum Fluid Pressure at 20°C: 10 bar

Fluid Temperature Range: 0°C - 120°C

Construction:

Body: PVDF

Seals: FPM

Spring (optional): Stainless Steel or hastelloy

End Connections: Flange mounted (flanges not included)



No Spring Return

FPM Seals			
	1 1/4"/40	07.0194	174.04
	1 1/2"/50	07.0204	178.46
	2"/63	07.0044	192.48
	2 1/2"/75	07.0054	222.71
	3"/90	07.0064	267.69
	4"/110	07.0074	368.71
	5"/140	07.0084	497.02
	6"/160	07.0094	700.56
	8"/225	07.0104	1669.55
	10"/280	07.0114	1873.09

Stainless Steel Spring Return

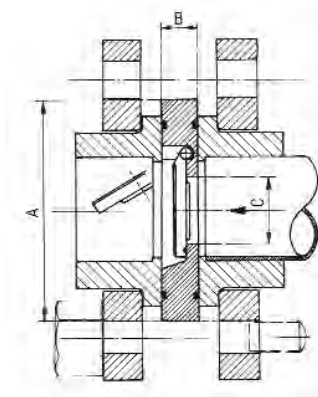
FPM Seals			
	1 1/4"/40	07.0195	242.63
	1 1/2"/50	07.0202	243.29
	2"/63	07.0045	263.28
	2 1/2"/75	07.0055	297.17
	3"/90	07.0065	349.54
	4"/110	07.0075	455.00
	5"/140	07.0085	617.25
	6"/160	07.0095	763.99
	8"/225	07.0105	1710.84
	10"/280	07.0115	1935.03

Hastelloy Spring Return

FPM Seals			
	1 1/4"/40		
	1 1/2"/50		
	2"/63		
	2 1/2"/75		
	3"/90		
	4"/110		
	5"/140		
	6"/160		
	8"/225		
	10"/280		

on application

DIMENSIONS (mm)



D	DN	A	B	C
63	50	109	18	32
75	65	129	20	40
90	80	144	20	52
110	100	164	23	70
140	125	195	23	92
160	150	220	26	112
225	200	275	35	150
280	250	330	40	190