

Durapipe RV Y-Type Strainer

Description: In-line sediment strainer
Mounting: In any position
Maximum Fluid Pressure at 20°C: 16 bar
Fluid Temperature Range: 0°C - 60°C
Construction:
Body: PVC-U
Seals: EPDM or FPM
Strainer: Polypropylene 0.6mm mesh (Optional Stainless Steel)



Inch Solvent Cement Unions

EPDM Seals	1/2	H0 UVE 102	45.97
	3/4	H0 UVE 103	50.05
	1	H0 UVE 104	67.73
	1 1/4	H0 UVE 105	81.92
	1 1/2	H0 UVE 106	112.90
	2	H0 UVE 107	158.86

MM Solvent Cement Unions

EPDM Seals	20	H0 UVE 306	45.97
	25	H0 UVE 307	50.96
	32	H0 UVE 308	66.28
	40	H0 UVE 309	82.00
	50	H0 UVE 310	110.12
	63	H0 UVE 311	172.27

Inch Solvent Cement Unions

FPM Seals	1/2	H0 UVF 102	62.26
	3/4	H0 UVF 103	69.38
	1	H0 UVF 104	90.28
	1 1/4	H0 UVF 105	102.08
	1 1/2	H0 UVF 106	163.29
	2	H0 UVF 107	213.99

MM Solvent Cement Unions

FPM Seals	20	H0 UVF 306	62.26
	25	H0 UVF 307	69.38
	32	H0 UVF 308	90.28
	40	H0 UVF 309	102.08
	50	H0 UVF 310	163.29
	63	H0 UVF 311	213.98

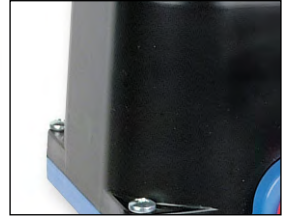
Also available in transparent PVC-U

actuated valves

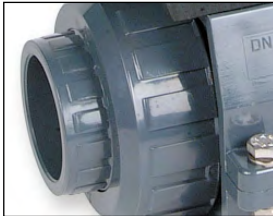
Praher Electrically Actuated Valves



240, 110, 24 volt AC and 110, 24 and 12 volt DC options. Manual override optional. Position indicator included



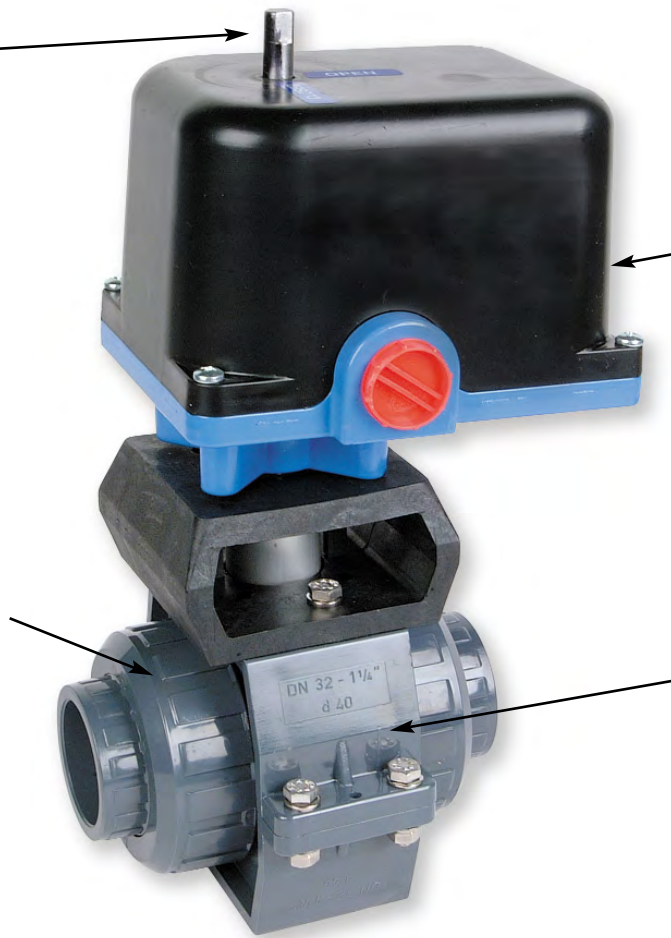
IP 65 all plastic housing with epoxy coated aluminium base.



Actuators can be fitted to Ball, Three Way Ball and Butterfly Valves.



Matched valve brackets ensure optimum performance and security. Brackets also available separately if required.



Part Number Matrix

Example	12.1108	E	1	A	G	N
Valve type and size	↑	↑	↑	↑	↑	↑
Actuator Type E=Electric	↑	↑	↑	↑	↑	↑
Voltage 1. 240V 2. 110V 3. 24V DC 4. 24V AC	↑	↑	↑	↑	↑	↑
Switch Options A. Open / Closed B. Open / Closed & 2 Off Extra Volt Free	↑	↑	↑	↑	↑	↑
Actuator Type G. Reversible Actuator with Override H. Uni Directional No Override I. Other Manufacturer J. EEXD Version	↑	↑	↑	↑	↑	↑
Extras N. Heater & Thermostat R. 4-20Ma Positioner V. Fail Safe Operation	↑	↑	↑	↑	↑	↑
X. Special	↑	↑	↑	↑	↑	↑

Example: 2" PVC Ball Valve, EPDM Seals, PTFE Seats Solvent Ended, with Electric 240V Actuator Reversible with Manual Override, Open/Closed Limit Switches and Heater/Thermostat

Praher Type S4 Electrically Actuated Ball Valve

Description: In-line ball valve with electric operation

Mounting: In any position

Maximum Fluid Pressure at 20°C: Sizes up to 2"/63mm - 10 bar;
2 1/2"/75mm - 6 bar; 3"/90mm - 5 bar; 4"/110mm - 4 bar

Fluid Temperature Range: 0°C-60°C

Construction:

Body: PVC-U

Seals: EPDM or FPM

Seats: PTFE

End Connections: Solvent Sockets, BSP Female Threaded, HDPE Fusion Spigots

Actuation:

Housing Material: Plastic with epoxy coated aluminium base

Voltages: 240v AC; 110v AC; 24v AC; 110v DC; 24v DC; 12v DC

Frequency Range: 50/60 Hz

Protection: IP65

Manual Override: Optional

Position Indicator: Included

Contacts: Open, closed. Additional contacts optional.



Inch Solvent Cement Sockets

110v AC EPDM Seals PTFE Seats	3/8	12 1939 E2AG	556.09
	1/2	12 1760 E2AG	558.26
	3/4	12 2073 E2AG	565.30
	1	12 2069 E2AG	575.95
	1 1/4	12 2077 E2AG	591.28
	1 1/2	12 1107 E2AG	603.70
	2	12 1108 E2AG	620.50
	2 1/2	12 0323 E2AG	931.92
	3	12 0362 E2AG	977.92
	4	12 2143 E2AG	1056.82

Inch Solvent Cement Sockets

110v AC FPM Seals PTFE Seats	3/8	12 1479 E2AG	562.22
	1/2	12 1480 E2AG	563.81
	3/4	12 2148 E2AG	572.16
	1	12 2149 E2AG	584.57
	1 1/4	12 2150 E2AG	601.37
	1 1/2	12 0302 E2AG	615.98
	2	12 0300 E2AG	633.80
	2 1/2	12 1489 E2AG	958.21
	3	12 1490 E2AG	1017.38
	4	12 2792 E2AG	1099.89

MM Solvent Cement Sockets

110v AC EPDM Seals PTFE Seats	16	12 1116 E2AG	556.09
	20	12 1118 E2AG	558.26
	25	12 1120 E2AG	565.30
	32	12 1122 E2AG	575.95
	40	12 1124 E2AG	591.28
	50	12 1048 E2AG	603.70
	63	12 1049 E2AG	620.50
	75	12 1128 E2AG	931.92
	90	12 1130 E2AG	977.92
	110	12 1746 E2AG	1056.82

MM Solvent Cement Sockets

110v AC FPM Seals PTFE Seats	16	12 1117 E2AG	562.22
	20	12 1119 E2AG	563.81
	25	12 1121 E2AG	572.16
	32	12 1123 E2AG	584.57
	40	12 1125 E2AG	601.37
	50	12 1126 E2AG	615.98
	63	12 1127 E2AG	633.80
	75	12 1129 E2AG	958.21
	90	12 1131 E2AG	1017.38
	110	12 1747 E2AG	1099.89

Also available: Solvent Spigots, BSP Female Threaded Ends; HDPE Fusion Spigots
240v AC, 110v AC, 24v AC, 110v DC, 24v DC, 12v DC Actuators

Electric Actuated Valve Options		Pneumatic Actuated Valve Options	
Switch Options	Price	Body Material Options	Price
Open/Closed	included	Technopolymer	standard
Open/Closed plus 2 x extra volt free	93.52	Hard anodised aluminium	free option
Actuator Options		Stainless steel	on application
Reversible actuator with manual override	standard	Double pack epoxy coated	on application
Uni-directional actuator without manual override	on application	Switchbox Options (with beacon)	
Customer specification actuator	on application	IP65 Technopolymer 2 x mechanical switches	87.47
EEXD version actuator	on application	IP65 Technopolymer 2 x proximity switches EEXIA	342.15
Power Options		IP67 Polycarbonate 2 x V3 gold plated switches	118.34
110v AC	standard	IP67 Polycarbonate 2 x V3 gold plated switches EEXIA	185.21
240v AC	free option	IP67 Polycarbonate 2 x proximity switches EEXIA	295.84
24v DC	on application	IP67 Aluminium 2 x V3 gold plated switches EEXD	308.70
24v AC	on application	Solenoid Valve Options	
Extra Options		240v AC Solenoid	90.03
Heater and thermostat	on application	110v AC Solenoid	90.03
4 - 20Ma positioner	on application	24v DC Solenoid	90.03
Fail-Safe operation	on application	24v AC Solenoid	90.03

Durapipe VKD Electrically Actuated Ball Valve

Description: In-line ball valve with electric operation
Mounting: In any position
Maximum Fluid Pressure at 20°C: 16 bar (2"/63mm and 4"/110mm: 10 bar)
Fluid Temperature Range: 0°C to 60°C
Construction:
Body: PVC-U
Seals: EPDM or FPM
Seats: PTFE
End Connections: Solvent Sockets, BSP Female Threaded
Actuation:
Housing Material: ABS cover, glass filled nylon housing
Voltages: 240v / 110v AC (Auto Sensing); 24v AC / 24v DC (Auto Sensing)
Frequency Range: 50/60 Hz
Protection: IP65
Ambient Temperature Range: 0°C to 60°C
Manual Override: Included
Position Indicator: Included
Contacts: Open, closed
Features: Industrial grade valve for long term, maintenance-free life
Options: 10W anti-condensation heater; 4.7Kohms potentiometer; 4 to 20ma or 0 to 10v proportional control; fail safe battery back-up



Inch Solvent Cement Sockets

240v / 110v AC		With Manual Override	
EPDM Seals	3/8	H1 DKE 101	440.12
	1/2	H1 DKE 102	442.20
PTFE Seats	3/4	H1 DKE 103	451.66
	1	H1 DKE 104	464.68
	1 1/4	H1 DKE 105	485.22
	1 1/2	H1 DKE 106	513.33
	2	H1 DKE 107	546.72
	2 1/2	H1 DKE 312	859.66
	3	H1 DKE 109	927.57
	4	H1 DKE 110	1121.94

Inch Solvent Cement Sockets

240v / 110v AC		With Manual Override	
FPM Seals	3/8	H1 DKF 101	457.93
	1/2	H1 DKF 102	462.79
PTFE Seats	3/4	H1 DKF 103	495.38
	1	H1 DKF 104	482.91
	1 1/4	H1 DKF 105	508.16
	1 1/2	H1 DKF 106	542.97
	2	H1 DKF 107	597.32
	2 1/2	H1 DKF 312	930.01
	3	H1 DKF 109	1021.65
	4	H1 DKF 110	1154.95

MM Solvent Cement Sockets

240v / 110v		With Manual Override	
EPDM Seals	16	H1 DKE 305	440.12
	20	H1 DKE 306	442.30
PTFE Seats	25	H1 DKE 307	451.70
	32	H1 DKE 308	464.63
	40	H1 DKE 309	485.22
	50	H1 DKE 310	513.26
	63	H1 DKE 311	546.77
	75	H1 DKE 312	859.66
	90	H1 DKE 313	930.00
	110	H1 DKE 314	1121.94

MM Solvent Cement Sockets

240v / 110v AC		With Manual Override	
FPM Seals	16	H1 DKF 305	457.95
	20	H1 DKF 306	458.73
PTFE Seats	25	H1 DKF 307	470.27
	32	H1 DKF 308	471.83
	40	H1 DKF 309	508.18
	50	H1 DKF 310	538.35
	63	H1 DKF 311	545.26
	75	H1 DKF 312	930.01
	90	H1 DKF 313	1021.65
	110	H1 DKF 314	1154.95

BSP Female Threaded

240v / 110v		With Manual Override	
EPDM Seals	1/2	H1 DKE B02	452.57
	3/4	H1 DKE B03	463.06
PTFE Seats	1	H1 DKE B04	472.20
	1 1/4	H1 DKE B05	501.58
	1 1/2	H1 DKE B06	530.33
	2	H1 DKE B07	573.05

BSP Female Threaded

240v / 110v AC		With Manual Override	
FPM Seals	1/2	H1 DKF B02	464.71
	3/4	H1 DKF B03	476.87
PTFE Seats	1	H1 DKF B04	498.90
	1 1/4	H1 DKF B05	521.15
	1 1/2	H1 DKF B06	560.94
	2	H1 DKF B07	617.74

For 24v AC / 24v DC Prefix part number H2 (e.g. H2 DKE 101)
 Prices are as 240v / 110v AC.
 Optional 2" / 63mm and 4" / 110mm 16 bar
 Prices on request

Praher Type S4 Electrically Actuated T-Port & L-Port Ball Valve

Description: In-line T-Port or L-Port 3-way ball valve with electric actuation

Mounting: In any position

Maximum Fluid Pressure at 20°C: 10 bar

Fluid Temperature Range: 0°C-60°C

Construction:

Body: PVC-U

Seals: EPDM or FPM

Seats: PTFE

End Connections: Solvent Sockets, BSP Female Thread, HDPE Fusion Spigots

Actuation:

Housing Material: Plastic with epoxy coated aluminium base

Voltages: 230v AC; 115v AC; 24v AC; 12v AC

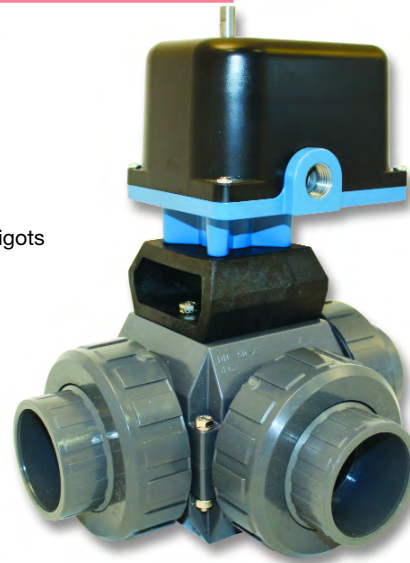
Frequency Range: 50/60 Hz

Protection: IP65

Manual Override: Included

Position Indicator: Included

Contacts: Open, closed, extra volt free on request



2 Position Actuator - T-Port

Inch Solvent Cement Sockets

110v EPDM Seals	Inch	Part No.	Price
	3/8	12.0629E2AG	642.70
	1/2	12.0631E2AG	642.70
	3/4	12.2995E2AG	643.75
	1	12.2195E2AG	643.75
	1 1/4	12.2997E2AG	662.88
	1 1/2	12.2752E2AG	662.88
	2	12.2754E2AG	688.08

MM Solvent Cement Sockets

110v EPDM Seals	MM	Part No.	Price
	16	12.0625E2AG	642.70
	20	12.0627E2AG	642.70
	25	12.1816E2AG	643.75
	32	12.1774E2AG	643.75
	40	12.2714E2AG	662.88
	50	12.2715E2AG	662.88
	63	12.2716.E2AG	688.08

Inch Solvent Cement Sockets

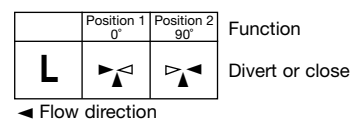
110v FPM Seals	Inch	Part No.	Price
	3/8	12.0674E2AG	661.08
	1/2	12.0676E2AG	661.08
	3/4	12.0671E2AG	663.83
	1	12.0657E2AG	663.83
	1 1/4	12.0778E2AG	688.96
	1 1/2	12.0773E2AG	690.30
	2	12.0775E2AG	721.17

MM Solvent Cement Sockets

110v FPM Seals	MM	Part No.	Price
	16	12.0667E2AG	661.08
	20	12.0669E2AG	661.08
	25	12.1831E2AG	663.83
	32	12.0307E2AG	663.83
	40	12.0767E2AG	688.96
	50	12.0768E2AG	690.30
	63	12.0769E2AG	721.17

2 Position Actuator - L-Port

Switch indication L-bore - 2 positions



Inch Solvent Cement Sockets

110v EPDM Seals	Inch	Part No.	Price
	3/8	12.0630E2AG	642.70
	1/2	12.0633E2AG	642.70
	3/4	12.2996E2AG	643.75
	1	12.1897E2AG	643.75
	1 1/4	12.2998E2AG	662.88
	1 1/2	12.2753E2AG	662.88
	2	12.2755E2AG	688.08

MM Solvent Cement Sockets

110v EPDM Seals	MM	Part No.	Price
	16	12.0626E2AG	642.70
	20	12.0628E2AG	642.70
	25	12.1832E2AG	643.75
	32	12.1833E2AG	643.75
	40	12.2717E2AG	662.88
	50	12.2718E2AG	662.88
	63	12.2719E2AG	688.08

Inch Solvent Cement Sockets

110v FPM Seals	Inch	Part No.	Price
	3/8	12.0675E2AG	661.08
	1/2	12.0677E2AG	661.08
	3/4	12.0672E2AG	663.83
	1	12.0658E2AG	663.83
	1 1/4	12.0779E2AG	688.96
	1 1/2	12.0774E2AG	690.30
	2	12.0776E2AG	721.17

MM Solvent Cement Sockets

110v FPM Seals	MM	Part No.	Price
	16	12.0668E2AG	661.08
	20	12.0670E2AG	661.08
	25	12.1834E2AG	663.83
	32	12.1835E2AG	663.83
	40	12.0770E2AG	688.96
	50	12.0771E2AG	690.30
	63	12.0772E2AG	721.17

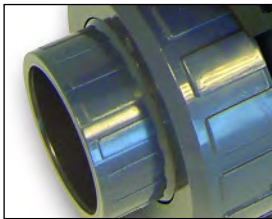
Other voltages on request - enquire for details.

actuated valves

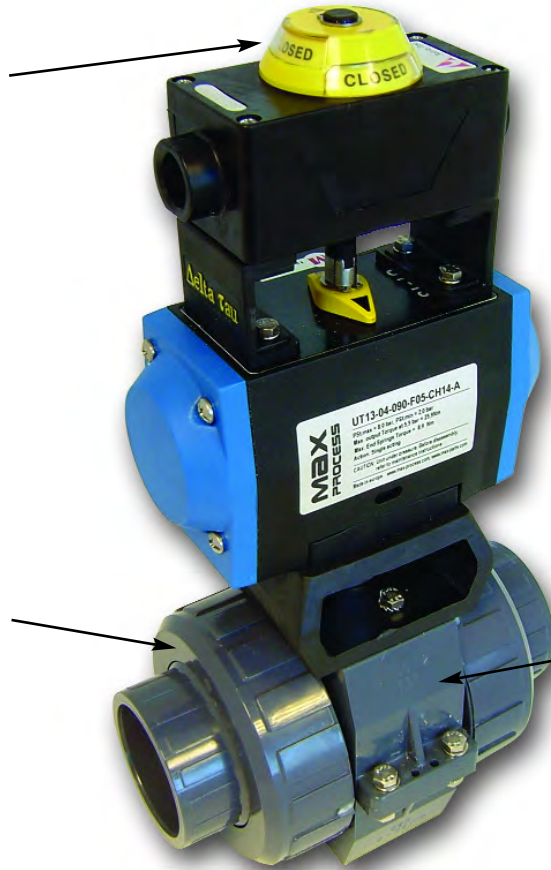
Praher Pneumatically Actuated Valves



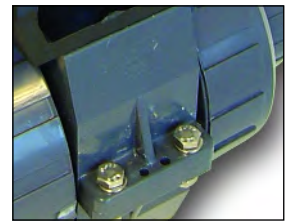
Visual position indicator as standard. Unit can be fitted with optional switchbox to suit application requirements.



Actuators can be fitted to Ball, Three Way Ball and Butterfly Valves.



All plastic technopolymer housing suitable for aggressive environments. Other housing materials available to order.



Matched valve brackets ensure optimum performance and security. Brackets also available separately if required.

Part Number Matrix

Example	12.1108	P	1	A	F	M
Valve type and size	↑	↑	↑	↑	↑	↑
Actuator Type P= Pneumatic Z= Manual Valve with Switchbox		↑				
Actuator Mode 1. Fail Safe Close 2. Fail Safe Open 3. Double Acting			↑			
Body Material A. Technopolymer Actuator as standard				↑		
Body Material Options B. Stainless Steel Actuator C. Double Pack Epoxy Coated D. Hard Anodised Aluminium					↑	
Switchbox Options E. Switchbox IP65 Technopolymer 2 x Mechanical Switches with Beacon F. Switchbox IP65 Technopolymer 2 x Proximity Switches EEZIA with Beacon G. Switchbox IP67 Polycarb 2 x V3 Gold Plated Switches with Beacon H. Switchbox IP67 Polycarb 2 x V3 Gold Plated Switches EEXIA with Beacon I. Switchbox IP67 Polycarb 2 x Proximity Switches EEXIA with Beacon J. Switchbox IP67 Aluminium 2 x V3 Gold Plated Switches EEXD with Beacon						↑
Solenoid Valve Options M. Solenoid 240V N. Solenoid 110V O. Solenoid 24V DC P. Soleboid 24V AC X. Special						

Example: 2" PVC Ball Valve, EPDM Seals, PTFE Seats Solvent Ended, with Pneumatic Technopolymer Fail Safe Close Actuator, Technopolymer Switchbox EEXIA with Beacon, and 240V Solenoid Valve.

Praher Type S4 Pneumatically Actuated Ball Valve

Description: In-line ball valve with pneumatic operation
Mounting: In any position
Maximum Fluid Pressure at 20°C: Sizes up to 2 1/2"/75mm - 16 bar; 3"/90mm - 10 bar; 4"/110mm - 6 bar
Fluid Temperature Range: 0°C-60°C
Construction:
Body: PVC-U
Seals: EPDM or FPM
Seats: PTFE
End Connections: Solvent Sockets, BSP Female Threaded, HDPE Fusion Spigots
Actuation:
Housing Material: Plastic (optional anodised aluminium)
Air Actuators: Fail-safe close, fail-safe open, double acting
Protection: IP65
Manual Override: Optional **Position Indicator:** Included
Contacts: Optional limit switch box with 2 mechanical switches
Pilot Valve: Solenoid, not included



Valve shown with optional limit switches

Inch Solvent Cement Sockets

Fail-safe close EPDM Seals PTFE Seats	3/8	12 1939 P1A	281.62
	1/2	12 1760 P1A	282.62
	3/4	12 2073 P1A	289.37
	1	12 2069 P1A	298.71
	1 1/4	12 2077 P1A	342.55
	1 1/2	12 1107 P1A	353.93
	2	12 1108 P1A	432.35
	2 1/2	12 0323 P1A	568.06
	3	12 0362 P1A	678.63
	4	12 2143 P1A	833.47

Inch Solvent Cement Sockets

Fail-safe close FPM Seals PTFE Seats	3/8	12 1479 P1A	286.60
	1/2	12 1480 P1A	288.04
	3/4	12 2148 P1A	295.51
	1	12 2149 P1A	306.46
	1 1/4	12 2150 P1A	351.14
	1 1/2	12 0302 P1A	364.00
	2	12 0300 P1A	443.92
	2 1/2	12 1489 P1A	591.15
	3	12 1490 P1A	712.24
	4	12 2792 P1A	878.02

MM Solvent Cement Sockets

Fail-safe close EPDM Seals PTFE Seats	16	12 1116 P1A	281.62
	20	12 1118 P1A	282.78
	25	12 1120 P1A	289.37
	32	12 1122 P1A	298.71
	40	12 1124 P1A	342.55
	50	12 1048 P1A	353.93
	63	12 1049 P1A	432.35
	75	12 1128 P1A	568.06
	90	12 1130 P1A	678.63
	110	12 1746 P1A	833.47

MM Solvent Cement Sockets

Fail-safe close FPM Seals PTFE Seats	16	12 1117 P1A	286.60
	20	12 1119 P1A	288.04
	25	12 1121 P1A	295.51
	32	12 1123 P1A	306.46
	40	12 1125 P1A	351.44
	50	12 1126 P1A	364.00
	63	12 1127 P1A	443.92
	75	12 1129 P1A	591.15
	90	12 1131 P1A	712.24
	110	12 1747 P1A	878.02

Inch Solvent Cement Sockets

Double Acting EPDM Seals PTFE Seats	3/8	12 1939 P3A	260.34
	1/2	12 1760 P3A	261.49
	3/4	12 2073 P3A	268.06
	1	12 2069 P3A	277.41
	1 1/4	12 2077 P3A	291.40
	1 1/2	12 1107 P3A	302.80
	2	12 1108 P3A	342.18
	2 1/2	12 0323 P3A	474.34
	3	12 0362 P3A	653.07
	4	12 2143 P3A	658.79

Inch Solvent Cement Sockets

Double Acting FPM Seals PTFE Seats	3/8	12 1479 P3A	265.29
	1/2	12 1480 P3A	266.74
	3/4	12 2148 P3A	274.19
	1	12 2149 P3A	285.14
	1 1/4	12 2150 P3A	300.31
	1 1/2	12 0302 P3A	312.87
	2	12 0300 P3A	353.73
	2 1/2	12 1489 P3A	497.43
	3	12 1490 P3A	686.67
	4	12 2792 P3A	703.34

MM Solvent Cement Sockets

Double Acting EPDM Seals PTFE Seats	16	12 1116 P3A	260.34
	20	12 1118 P3A	261.49
	25	12 1120 P3A	268.06
	32	12 1122 P3A	277.41
	40	12 1124 P3A	291.40
	50	12 1048 P3A	302.80
	63	12 1049 P3A	342.18
	75	12 1128 P3A	474.34
	90	12 1130 P3A	653.07
	110	12 1746 P3A	658.79

MM Solvent Cement Sockets

Double Acting FPM Seals PTFE Seats	16	12 1117 P3A	265.29
	20	12 1119 P3A	266.74
	25	12 1121 P3A	274.19
	32	12 1123 P3A	285.14
	40	12 1125 P3A	300.31
	50	12 1126 P3A	312.87
	63	12 1127 P3A	353.73
	75	12 1129 P3A	497.43
	90	12 1131 P3A	686.67
	110	12 1747 P3A	703.34

Requires pilot valve - enquire for details.

Also available with BSP Female Threaded connections, and with fail-safe open actuators. Please enquire for details.

Durapipe VKD Pneumatically Actuated Ball Valve

Description: In-line ball valve with pneumatic operation

Mounting: In any position

Maximum Fluid Pressure at 20°C: 16 bar

Fluid Temperature Range: 0°C to 60°C

Construction:

Body: PVC-U

Seals: EPDM or FPM

Seats: PTFE

End Connections: Solvent Sockets, BSP Female Threaded

Actuation:

Housing Material: Glass filled polyamid (nylon)

Air Actuators: Fail-safe close, fail-safe open, double acting **Protection:** IP65

Ambient Temperature Range: 0°C to 60°C

Manual Override: Included **Position Indicator:** Included **Contacts:** Optional

Pilot Valve: Solenoid, not included **Options:** Limit switches



Valve shown with optional limit switches

Inch Solvent Cement Sockets

Fail-Safe Close	3/8	HP DKE 101	266.34
	1/2	HP DKE 102	265.32
EPDM Seals	3/4	HP DKE 103	277.68
PTFE Seats	1	HP DKE 104	287.80
	1 1/4	HP DKE 105	308.35
	1 1/2	HP DKE 106	364.75
	2	HP DKE 107	398.14
	2 1/2	HP DKE 312	700.32
	3	HP DKE 109	768.24
	4	HP DKE 110	921.00

Inch Solvent Cement Sockets

Fail-Safe Close	3/8	HP DKF 101	277.68
	1/2	HP DKF 102	275.61
FPM Seals	3/4	HP DKF 103	290.03
PTFE Seats	1	HP DKF 104	308.34
	1 1/4	HP DKF 105	327.91
	1 1/2	HP DKF 106	391.57
	2	HP DKF 107	445.09
	2 1/2	HP DKF 312	767.65
	3	HP DKF 109	859.28
	4	HP DKF 110	1109.23

MM Solvent Cement Sockets

Fail-Safe Close	16	HP DKE 305	266.34
	20	HP DKE 306	265.42
EPDM Seals	25	HP DKE 307	274.82
PTFE Seats	32	HP DKE 308	287.75
	40	HP DKE 309	310.62
	50	HP DKE 310	366.98
	63	HP DKE 311	398.21
	75	HP DKE 312	700.32
	90	HP DKE 313	767.64
	110	HP DKE 314	917.60

MM Solvent Cement Sockets

Fail-Safe Close	16	HP DKF 305	277.70
	20	HP DKF 306	278.48
FPM Seals	25	HP DKF 307	290.01
PTFE Seats	32	HP DKF 308	289.56
	40	HP DKF 309	327.93
	50	HP DKF 310	391.62
	63	HP DKF 311	445.07
	75	HP DKF 312	767.65
	90	HP DKF 313	859.28
	110	HP DKF 314	992.60

Inch Solvent Cement Sockets

Double Acting	3/8	HR DKE 101	266.34
	1/2	HR DKE 102	268.39
EPDM Seals	3/4	HR DKE 103	277.68
PTFE Seats	1	HR DKE 104	287.80
	1 1/4	HR DKE 105	310.63
	1 1/2	HR DKE 106	338.22
	2	HR DKE 107	399.82
	2 1/2	HR DKE 312	700.32
	3	HR DKE 109	767.64
	4	HR DKE 110	917.60

Inch Solvent Cement Sockets

Double Acting	3/8	HR DKF 101	277.68
	1/2	HR DKF 102	278.49
FPM Seals	3/4	HR DKF 103	290.03
PTFE Seats	1	HR DKF 104	306.04
	1 1/4	HR DKF 105	327.91
	1 1/2	HR DKF 106	362.72
	2	HR DKF 107	445.91
	2 1/2	HR DKF 312	645.08
	3	HR DKF 109	859.28
	4	HR DKF 110	992.60

MM Solvent Cement Sockets

Double Acting	16	HR DKE 305	266.34
	20	HR DKE 306	268.47
EPDM Seals	25	HR DKE 307	277.70
PTFE Seats	32	HR DKE 308	290.41
	40	HR DKE 309	310.62
	50	HR DKE 310	338.13
	63	HR DKE 311	399.89
	75	HR DKE 312	700.32
	90	HR DKE 313	767.64
	110	HR DKE 314	917.60

MM Solvent Cement Sockets

Double Acting	16	HR DKF 305	277.71
	20	HR DKF 306	278.48
FPM Seals	25	HR DKF 307	290.01
PTFE Seats	32	HR DKF 308	291.58
	40	HR DKF 309	327.93
	50	HR DKF 310	362.77
	63	HR DKF 311	445.89
	75	HR DKF 312	645.08
	90	HR DKF 313	859.28
	110	HR DKF 314	992.60

Prices are as fail-safe closed

Also available with:

Fail-safe open actuator. Prefix Part Number HQ (e.g. HQ DKE 101)

Optional extras:

Limit switches (Prices on application)

Praher Type T4 Pneumatically Actuated Diaphragm Valve

Description: In-line pneumatically operated diaphragm valve
Mounting: In any position
Maximum Fluid Pressure at 20°C: 10 bar
Fluid Temperature Range: 0°C-60°C
Construction:
Body: PVC-U
Diaphragm: EPDM, FPM or PTFE (EPDM backed)
End Connections: Solvent Sockets, Solvent Spigots, Flanged BS4504 PN10
Actuation:
Housing Material: Glass Reinforced Polypropylene **Air Actuators:** Failsafe close
Protection: IP65 **Manual Override:** Optional **Position Indicator:** Included
Contacts: Optional
Pilot Valve: Solenoid, not included



Inch Solvent Cement Unions

Failsafe close
EPDM Diaphragm

1/2	12.5775	154.10
3/4	12.5776	157.75
1	12.5777	221.30
1 1/4	12.5778	289.96
1 1/2	12.5779	291.40
2	12.5780	340.33

MM Solvent Cement Unions

Failsafe close
EPDM Diaphragm

20	12.5616	154.10
25	12.5619	157.75
32	12.5622	221.30
40	12.5625	289.96
50	12.5628	291.40
63	12.5631	340.33

Inch Solvent Cement Unions

Failsafe close
FPM Diaphragm

1/2	12.6240	162.13
3/4	12.6241	165.04
1	12.6242	231.51
1 1/4	12.6243	302.35
1 1/2	12.6244	304.56
2	12.6245	356.41

MM Solvent Cement Unions

Failsafe close
FPM Diaphragm

20	12.5617	162.13
25	12.5620	165.04
32	12.5623	231.51
40	12.5626	302.35
50	12.5629	304.56
63	12.5632	356.41

Inch Solvent Cement Unions

Failsafe close
PTFE Diaphragm

1/2	12.6247	162.13
3/4	12.6248	165.04
1	12.6249	231.51
1 1/4	12.6250	302.35
1 1/2	12.6251	304.56
2	12.6252	356.41

MM Solvent Cement Unions

Failsafe close
PTFE Diaphragm

20	12.5618	162.13
25	12.5621	165.04
32	12.5624	231.51
40	12.5627	302.35
50	12.5630	304.56
63	12.5633	356.41

Requires pilot valve - enquire for details.

ASV Stubbe Type 160 2/2 Way Solenoid Valve

Description: Pilot operated solenoid valve
Mounting: Coil preferable in upright position
Pressure Range at 20°C: 0.3 to 6 bar
Fluid Temperature Range: 0°C-60°C
Construction:
Body: PVC-U
Seal: EPDM or FPM
Voltage: 230v 50Hz; 24v DC; special voltages on request
Switching Times: Opening: 30 - 150 ms Closing: 50 ms - 1 sec
Protection: IP65 (EEXM II T4 on request)
End Connections: Solvent Sockets
Functions: Normally Closed or Normally Open



MM Solvent Cement Sockets

230v AC
EPDM Seal

20	692 44	238.15
25	692 48	308.11
32	692 52	353.47
40	692 56	514.16
50	692 61	514.16
63	692 65	574.73

MM Solvent Cement Sockets

230v AC
FPM Seal

20	692 46	246.74
25	692 50	316.71
32	692 54	365.01
40	692 58	534.04
50	692 63	534.04
63	692 67	606.27

MM Solvent Cement Sockets

24v DC
EPDM Seal

20	692 45	238.15
25	692 49	308.11
32	692 53	353.47
40	692 57	514.16
50	692 62	514.16
63	692 66	574.72

MM Solvent Cement Sockets

24v DC
FPM Seal

20	692 47	246.74
25	692 51	316.71
32	692 55	365.01
40	692 60	534.04
50	692 64	534.04
63	692 68	606.27

Durapipe VM Pneumatically Actuated Diaphragm Valve

Description: In-line pneumatically operated diaphragm valve

Mounting: In any position

Maximum Fluid Pressure at 20°C: Sizes up to 2"/63mm - 10 bar;
sizes 2 1/2"/75mm to 4"/110mm - 6 bar

Fluid Temperature Range: 0°C to 60°C

Construction:

Body: PVC-U

Diaphragm: EPDM, FPM or PTFE

End Connections: Solvent Spigots

Actuation:

Housing Material: Glass reinforced polypropylene

Air Actuators: Fail-safe close, fail-safe open, double acting **Protection:** IP65

Manual Override: Optional **Position Indicator:** Optional

Control Fluid Temperature: Maximum 40°C **Contacts:** Optional

Pilot Valve: Solenoid, not included

Options: Stroke limiter; position indicator (optical or electronic); manual override



Inch Solvent Cement Spigots			
Fail-Safe Close EPDM Diaphragm	1/2	HP VME 202	242.83
	3/4	HP VME 203	255.86
	1	HP VME 204	276.50
	1 1/4	HP VME 205	361.18
	1 1/2	HP VME 206	403.64
	2	HP VME 207	504.94
	2 1/2	HP VME 208	820.88
	4	HP VME 210	1400.94

Inch Solvent Cement Spigots			
Fail-Safe Close FPM Diaphragm	1/2	HP VMF 202	265.95
	3/4	HP VMF 203	282.79
	1	HP VMF 204	304.54
	1 1/4	HP VMF 205	396.92
	1 1/2	HP VMF 206	448.32
	2	HP VMF 207	560.86
	2 1/2	HP VMF 208	863.09
	4	HP VMF 210	1531.44

MM Solvent Cement Spigots			
Fail-Safe Close EPDM Diaphragm	20	HP VME 406	242.76
	25	HP VME 407	257.48
	32	HP VME 408	276.53
	40	HP VME 409	361.27
	50	HP VME 410	419.72
	63	HP VME 411	504.90
	75	HP VME 412	812.53
	90	HP VME 413	1217.29
	110	HP VME 414	1396.53

MM Solvent Cement Spigots			
Fail-Safe Close FPM Diaphragm	20	HP VMF 406	267.56
	25	HP VMF 407	284.05
	32	HP VMF 408	305.45
	40	HP VMF 409	334.93
	50	HP VMF 410	448.82
	63	HP VMF 411	498.23
	75	HP VMF 412	775.15
	90	HP VMF 413	1128.18
	110	HP VMF 414	1606.51

Inch Solvent Cement Spigots			
Double Acting EPDM Diaphragm	1/2	HR VME 202	141.64
	3/4	HR VME 203	154.68
	1	HR VME 204	175.33
	1 1/4	HR VME 205	228.88
	1 1/2	HR VME 206	271.34
	2	HR VME 207	310.38
	2 1/2	HR VME 208	494.00
	4	HR VME 210	949.56

Inch Solvent Cement Spigots			
Double Acting FPM Diaphragm	1/2	HR VMF 202	164.77
	3/4	HR VMF 203	181.62
	1	HR VMF 204	203.38
	1 1/4	HR VMF 205	264.63
	1 1/2	HR VMF 206	316.02
	2	HR VMF 207	366.30
	2 1/2	HR VMF 208	523.33
	4	HR VMF 210	1106.66

MM Solvent Cement Spigots			
Double Acting EPDM Diaphragm	20	HR VME 406	141.60
	25	HR VME 407	154.60
	32	HR VME 408	175.37
	40	HR VME 409	228.96
	50	HR VME 410	287.70
	63	HR VME 411	310.34
	75	HR VME 412	423.26
	90	HR VME 413	710.44
	110	HR VME 414	949.60

MM Solvent Cement Spigots			
Double Acting FPM Diaphragm	20	HR VMF 406	164.47
	25	HR VMF 407	180.95
	32	HR VMF 408	202.37
	40	HR VMF 409	263.55
	50	HR VMF 410	314.00
	63	HR VMF 411	363.40
	75	HR VMF 412	576.86
	90	HR VMF 413	810.93
	110	HR VMF 414	1090.99

Also available with:
Fail-safe open actuator. Prefix Part Number HQ (e.g. HQ VME 202)
Prices are as Double Acting

Durapipe VM Pneumatically Actuated Diaphragm Valve

Description: In-line pneumatically operated diaphragm valve with limit switches

Mounting: In any position

Maximum Fluid Pressure at 20°C: Sizes up to 2"/63mm - 10 bar;

sizes 2 1/2"/75mm to 4"/110mm - 6 bar

Fluid Temperature Range: 0°C to 60°C

Construction:

Body: PVC-U

Diaphragm: EPDM, FPM or PTFE

End Connections: Solvent Spigots

Actuation:

Housing Material: Glass reinforced polypropylene

Air Actuators: Fail-safe close, fail-safe open, double acting **Protection:** IP65

Manual Override: Optional **Position Indicator:** Optional

Control Fluid Temperature: Maximum 40°C **Contacts:** Included

Pilot Valve: Solenoid, not included

Options: Stroke limiter; position indicator (optical or electronic); manual override



Inch Solvent Cement Spigots

With Limit Switches

Fail-Safe Close
EPDM Diaphragm

1/2	HS VME 202	347.89
3/4	HS VME 203	360.66
1	HS VME 204	380.94
1 1/4	HS VME 205	462.36
1 1/2	HS VME 206	504.82
2	HS VME 207	609.86
2 1/2	HS VME 208	924.91
3	HS VME 209	1320.40
4	HS VME 210	1499.58

Inch Solvent Cement Spigots

With Limit Switches

Fail-Safe Close
FPM Diaphragm

1/2	HS VMF 202	370.57
3/4	HS VMF 203	387.10
1	HS VMF 204	408.47
1 1/4	HS VMF 205	501.48
1 1/2	HS VMF 206	551.93
2	HS VMF 207	664.75
2 1/2	HS VMF 208	1001.71
3	HS VMF 209	1464.48
4	HS VMF 210	1653.81

MM Solvent Cement Spigots

With Limit Switches

Fail-Safe Close
EPDM Diaphragm

20	HS VME 406	347.82
25	HS VME 407	360.60
32	HS VME 408	380.96
40	HS VME 409	466.47
50	HS VME 410	524.11
63	HS VME 411	609.81
75	HS VME 412	917.67
90	HS VME 413	1320.38
110	HS VME 414	1499.64

MM Solvent Cement Spigots

With Limit Switches

Fail-Safe Close
FPM Diaphragm

20	HS VMF 406	370.66
25	HS VMF 407	387.16
32	HS VMF 408	408.56
40	HS VMF 409	501.48
50	HS VMF 410	551.93
63	HS VMF 411	664.79
75	HS VMF 412	1013.05
90	HS VMF 413	1429.53
110	HS VMF 414	1654.09

Inch Solvent Cement Spigots

With Limit Switches

Double Acting
EPDM Diaphragm

1/2	HU VME 202	244.78
3/4	HU VME 203	257.57
1	HU VME 204	277.84
1 1/4	HU VME 205	331.57
1 1/2	HU VME 206	341.37
2	HU VME 207	411.55
2 1/2	HU VME 208	591.83
3	HU VME 209	804.90
4	HU VME 210	1039.59

Inch Solvent Cement Spigots

With Limit Switches

Double Acting
FPM Diaphragm

1/2	HU VMF 202	269.21
3/4	HU VMF 203	282.79
1	HU VMF 204	305.36
1 1/4	HU VMF 205	366.66
1 1/2	HU VMF 206	417.11
2	HU VMF 207	466.47
2 1/2	HU VMF 208	661.97
3	HU VMF 209	913.98
4	HU VMF 210	1193.81

MM Solvent Cement Spigots

With Limit Switches

Double Acting
EPDM Diaphragm

20	HU VME 406	244.71
25	HU VME 407	257.48
32	HU VME 408	277.86
40	HU VME 409	331.65
50	HU VME 410	389.29
63	HU VME 411	411.54
75	HU VME 412	577.94
90	HU VME 413	804.88
110	HU VME 414	1039.64

MM Solvent Cement Spigots

With Limit Switches

Double Acting
FPM Diaphragm

20	HU VMF 406	267.56
25	HU VMF 407	284.05
32	HU VMF 408	305.45
40	HU VMF 409	366.66
50	HU VMF 410	417.11
63	HU VMF 411	466.51
75	HU VMF 412	679.97
90	HU VMF 413	914.03
110	HU VMF 414	1194.11

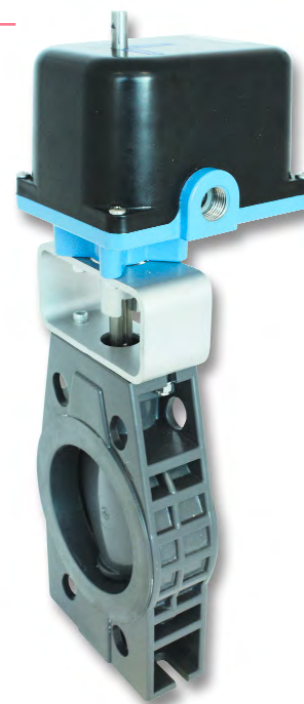
Also available with:

Fail-safe open actuator. Prefix Part Number HT (e.g. HT VME 202)

Prices are as Double Acting

Praher Type S4 Electrically Actuated Butterfly Valve

Description: Wafer style butterfly valve with electric actuation
Mounting: In any position, between flanges to BS4504 EN1072 PN10
Maximum Fluid Pressure at 20°C: Sizes 3"/90mm to 5"/140mm - 10 bar; Sizes 6"/160mm to 8"/225mm - 6 bar
Fluid Temperature Range: 0°C-60°C
Construction:
Body: PVC-U
Seals: EPDM or FPM
Shaft: Stainless Steel 304
End Connections: Flange mounted (flanges not included)
Actuation:
Housing Material: Aluminium
Voltages: 230v AC; 115v AC
Frequency Range: 50/60 Hz
Protection: IP65
Manual Override: Optional
Position Indicator: Included
Contacts: Open, closed plus two extra free contacts



230v AC EPDM Seals	3"/90	12 1919 E1AG	1088.94
	4"/110	12 1892 E1AG	1378.90
	5"/140	12 2001 E1AG	1581.92
	6"/160	12 1871 E1AG	1623.57
	8"/225	12 1872 E1AG	1767.43

230v AC FPM Seals	3"/90	12 1923 E1AG	1146.63
	4"/110	12 1924 E1AG	1440.24
	5"/140	12 2192 E1AG	1659.33
	6"/160	12 1925 E1AG	1685.64
	8"/225	12 1926 E1AG	1855.82

115v AC EPDM Seals	3"/90	12 1919 E2AG	1088.94
	4"/110	12 1892 E2AG	1378.90
	5"/140	12 2001 E2AG	1581.92
	6"/160	12 1871 E2AG	1623.57
	8"/225	12 1872 E2AG	1767.43

115v AC FPM Seals	3"/90	12 1923 E2AG	1146.63
	4"/110	12 1924 E2AG	1440.24
	5"/140	12 2192 E2AG	1659.33
	6"/160	12 1925 E2AG	1685.64
	8"/225	12 1926 E2AG	1855.82

Electric Actuated Valve Options

Switch Options	Price
Open/Closed	included
Open/Closed plus 2 x extra volt free	93.52
Actuator Options	
Reversible actuator with manual override	standard
Uni-directional actuator without manual override	on application
Customer specification actuator	on application
EEXD version actuator	on application
Power Options	
110v AC	standard
240v AC	free option
24v DC	on application
24v AC	on application
Extra Options	
Heater and thermostat	on application
4 - 20Ma positioner	on application
Fail-Safe operation	on application

Durapipe FK Electrically Actuated Butterfly Valve

Description: Wafer style butterfly valve with electric actuation
Mounting: In any position, between flanges to BS4504 PN10; BS10 table D/E or ANSI 150
Maximum Fluid Pressure at 20°C: 10 bar
Fluid Temperature Range: 0°C to 60°C
Construction:
Body: Glass reinforced polypropylene **Disc:** PVC-U **Seals:** EPDM, FPM or NBR
End Connections: Flange mounted (flanges not included)
Actuation:
Housing Material: ABS cover, glass filled nylon housing
Voltages: 240v AC / 110v AC (Auto Sensing); 24v AC; 24v DC (Auto Sensing)
Frequency Range: 50/60 Hz
Protection: IP65
Ambient Temperature Range: 0°C to 60°C **Manual Override:** Included
Position Indicator: Included
Contacts: Open, closed **Options:** 10W anti-condensation heater; 4.7 Kohms potentiometer; 4 to 20ma or 0 to 10v proportional control; fail safe battery back-up



Flange Mounted
With Manual Override

240v / 110v AC
EPDM Seals

1 1/2/50	H1 FKE 106	560.09
2/63	H1 FKE 107	564.89
2 1/2/75	H1 FKE 108	582.15
3/90	H1 FKE 109	738.88
4/110	H1 FKE 110	819.39
5/140	H1 FKE 111	1124.55
6/160	H1 FKE 112	1199.72
8/225	H1 FKE 113	1463.14
10/250	H1 FKE 114	2710.22
12/315	H1 FKE 115	2832.68

Flange Mounted
With Manual Override

240v / 110v AC
FPM Seals

1 1/2/50	H1 FKF 106	593.02
2/63	H1 FKF 107	606.11
2 1/2/75	H1 FKF 108	626.27
3/90	H1 FKF 109	768.78
4/110	H1 FKF 110	817.02
5/140	H1 FKF 111	1163.67
6/160	H1 FKF 112	1247.09
8/225	H1 FKF 113	1507.37
10/250	H1 FKF 114	3810.94
12/315	H1 FKF 115	4030.59

Flange Mounted
With Manual Override

24v AC/ DC
EPDM Seals

1 1/2/50	H2 FKE 106	560.09
2/63	H2 FKE 107	569.07
2 1/2/75	H2 FKE 108	586.02
3/90	H2 FKE 109	738.88
4/110	H2 FKE 110	782.97
5/140	H2 FKE 111	1124.55
6/160	H2 FKE 112	1199.72
8/225	H2 FKE 113	1463.14
10/250	H2 FKE 114	2710.22
12/315	H2 FKE 115	2832.68

Flange Mounted
With Manual Override

24v AC/ DC
FPM Seals

1 1/2/50	H2 FKF 106	593.02
2/63	H2 FKF 107	602.63
2 1/2/75	H2 FKF 108	626.27
3/90	H2 FKF 109	774.12
4/110	H2 FKF 110	821.48
5/140	H2 FKF 111	1163.67
6/160	H2 FKF 112	1247.09
8/225	H2 FKF 113	1507.37
10/250	H2 FKF 114	3810.94
12/315	H2 FKF 115	on application

Need advice on actuation?

Contact Tony Welsh
Call our freephone:

0800 975 79 71

Or from outside of the UK:
+44 191 521 3111



Praher Type S4 Pneumatically Actuated Butterfly Valve

Description: Wafer style butterfly valve with pneumatic actuator
Mounting: In any position, between flanges to BS4504 EN1072 PN10
Maximum Fluid Pressure at 20°C: Sizes 3"/90mm to 5"/140mm - 10 bar; Sizes 6"/160mm to 8"/225mm - 6 bar
Fluid Temperature Range: 0°C-60°C
Construction:
Body: PVC-U
Seals: EPDM or FPM
Shaft: Stainless Steel 304
End Connections: Flange mounted (flanges not included)
Actuation:
Housing Material: Aluminium
Air Actuators: Failsafe close, failsafe open, double acting
Protection: IP65
Manual Override: Optional
Position Indicator: Included
Contacts: Optional limit switch box with two mechanical switches
Pilot Valve: Solenoid, not included



Fail-safe close EPDM Seals	3/90	12 1919 P1D	660.21
	4/110	12 1892 P1D	738.37
	5/140	12 2001 P1D	787.32
	6/160	12 1871 P1D	979.40
	8/225	12 1872 P1D	2037.67
Double Acting EPDM Seals	3/90	12 1919 P3D	557.26
	4/110	12 1892 P3D	631.76
	5/140	12 2001 P3D	674.11
	6/160	12 1871 P3D	856.71
	8/225	12 1872 P3D	950.90
Fail-safe open EPDM Seals	3/90	12 1919 P2D	660.23
	4/110	12 1892 P2D	738.37
	5/140	12 2001 P2D	787.32
	6/160	12 1871 P2D	979.40
	8/225	12 1872 P2D	2037.67

Fail-safe close FPM Seals	3/90	12 1923 P1D	796.07
	4/110	12 1924 P1D	886.64
	5/140	12 2192 P1D	962.59
	6/160	12 1925 P1D	1180.24
	8/225	12 1926 P1D	2295.48
Double Acting FPM Seals	3/90	12 1923 P3D	693.11
	4/110	12 1924 P3D	780.01
	5/140	12 2192 P3D	850.12
	6/160	12 1925 P3D	1057.54
	8/225	12 1926 P3D	1208.72
Fail-safe open FPM Seals	3/90	12 1923 P2D	796.07
	4/110	12 1924 P2D	886.64
	5/140	12 2192 P2D	962.59
	6/160	12 1925 P2D	1180.24
	8/225	12 1926 P2D	2295.48

Requires pilot valve - enquire for details.

Pneumatic Actuated Valve Options

Body Material Options	Price
Hard anodised aluminium	standard
Stainless steel	on application
Double pack epoxy coated	on application
Switchbox Options (with beacon)	
IP65 Technopolymer 2 x mechanical switches	84.47
IP65 Technopolymer 2 x proximity switches EEXIA	342.15
IP67 Polycarbonate 2 x V3 gold plated switches	118.34
IP67 Polycarbonate 2 x V3 gold plated switches EEXIA	185.21
IP67 Polycarbonate 2 x proximity switches EEXIA	295.84
IP67 Aluminium 2 x V3 gold plated switches EEXD	308.70
Solenoid Valve Options	
240v AC Solenoid	90.03
110v AC Solenoid	90.03
24v DC Solenoid	90.03
24v AC Solenoid	90.03

Durapipe FK Pneumatically Actuated Butterfly Valve

Description: Wafer style butterfly valve with pneumatic actuation

Mounting: In any position, between flanges to BS4504 PN10; BS10 table D/E or ANSI 150

Maximum Fluid Pressure at 20°C: 10 bar

Fluid Temperature Range: 0°C to 60°C

Construction:

Body: Glass reinforced polypropylene **Disc:** PVC-U **Seals:** EPDM, FPM or NBR

End Connections: Flange mounted (flanges not included)

Actuation:

Housing Material: Glass filled polyamid (nylon)

Air Actuators: Fail-safe close, fail-safe open, double acting

Protection: IP65

Ambient Temperature Range: 0°C to 60°C **Manual Override:** Included

Position Indicator: Included

Contacts: Optional **Pilot Valve:** Solenoid, not included **Options:** Limit switches



Valve shown with optional limit switches

Flange Mounted

Fail Safe Close
EPDM Seals

1 1/2/50	HP FKE 106	408.70
2/63	HP FKE 107	416.31
2 1/2/75	HP FKE 108	434.61
3/90	HP FKE 109	546.82
4/110	HP FKE 110	591.73
5/140	HP FKE 111	774.72
6/160	HP FKE 112	849.07
8/225	HP FKE 113	1053.37
10/250	HP FKE 114	on application
12/315	HP FKE 115	on application

Flange Mounted

Fail Safe Close
FPM Seals

1 1/2/50	HP FKF 106	438.57
2/63	HP FKF 107	454.71
2 1/2/75	HP FKF 108	471.83
3/90	HP FKF 109	584.52
4/110	HP FKF 110	631.89
5/140	HP FKF 111	813.84
6/160	HP FKF 112	897.27
8/225	HP FKF 113	1082.48
10/250	HP FKF 114	3854.80
12/315	HP FKF 115	4074.45

Flange Mounted

Fail Safe Open
EPDM Seals

1 1/2/50	HQ FKE 106	408.70
2/63	HQ FKE 107	417.66
2 1/2/75	HQ FKE 108	434.61
3/90	HQ FKE 109	549.28
4/110	HQ FKE 110	593.37
5/140	HQ FKE 111	774.72
6/160	HQ FKE 112	849.07
8/225	HQ FKE 113	1049.74
10/250	HQ FKE 114	2754.07
12/315	HQ FKE 115	2876.53

Flange Mounted

Fail Safe Open
FPM Seals

1 1/2/50	HQ FKF 106	438.57
2/63	HQ FKF 107	454.73
2 1/2/75	HQ FKF 108	471.83
3/90	HQ FKF 109	584.52
4/110	HQ FKF 110	631.89
5/140	HQ FKF 111	813.84
6/160	HQ FKF 112	897.27
8/225	HQ FKF 113	1082.48
10/250	HQ FKF 114	3854.80
12/315	HQ FKF 115	4074.45

Flange Mounted

Double Acting
EPDM Seals

1 1/2/50	HR FKE 106	408.70
2/63	HR FKE 107	417.66
2 1/2/75	HR FKE 108	434.61
3/90	HR FKE 109	549.28
4/110	HR FKE 110	593.37
5/140	HR FKE 111	667.92
6/160	HR FKE 112	768.14
8/225	HR FKE 113	979.80
10/250	HR FKE 114	2481.70
12/315	HR FKE 115	2604.17

Flange Mounted

Double Acting
FPM Seals

1 1/2/50	HR FKF 106	438.57
2/63	HR FKF 107	454.71
2 1/2/75	HR FKF 108	471.83
3/90	HR FKF 109	584.52
4/110	HR FKF 110	631.89
5/140	HR FKF 111	707.03
6/160	HR FKF 112	790.45
8/225	HR FKF 113	1014.38
10/250	HR FKF 114	3582.43
12/315	HR FKF 115	3802.08

Optional extras:
Limit switches (Prices on application)