

Tee 90°



Size	Code	Price
1/4	801- 002C	5.47
3/8	801- 003C	5.62
1/2	801- 005C	5.84
3/4	801- 007C	6.26
1	801- 010C	8.02
1 1/4	801- 012C	15.90
1 1/2	801- 015C	18.83
2	801- 020C	25.01
2 1/2	801- 025C	53.24
3	801- 030C	57.46
4	801- 040C	77.73
6	801- 060C	212.23
8	801- 080C	555.75
10	801- 100C*	1158.18
12	801- 120C*	1775.19
14	801- 140CF*	5617.30
16	801- 160CF*	8024.89



Reducing Tee 90°

3/4 x 1/2	801- 101C	12.70
1 x 1/2	801- 130C	14.60
1 x 3/4	801- 131C	14.72
1 1/4 x 1 x 1	801- 158C	18.67
1 1/4 x 1 x 1/4	801- 159C	18.83
1 1/4 x 1/2	801- 166C	41.42
1 1/4 x 3/4	801- 167C	41.42
1 1/4 x 1	801- 168C	28.14
1 1/2 x 1 1/4 x 1	801- 202C	29.32
1 1/2 x 1/2	801- 209C	40.98
1 1/2 x 3/4	801- 210C	30.33
1 1/2 x 1	801- 211C	30.06
1 1/2 x 1 1/4	801- 212C	36.93
2 x 1/2	801- 247C	36.18
2 x 3/4	801- 248C	36.32
2 x 1	801- 249C	35.87
2 x 1 1/4	801- 250C	60.82
2 x 1 1/2	801- 251C	37.05
2 1/2 x 1/2	801- 287C	56.74
2 1/2 x 3/4	801- 288C	56.74
2 1/2 x 1	801- 289C	42.73
2 1/2 x 1 1/4	801- 290C	43.18
2 1/2 x 1 1/2	801- 291C	43.91
2 1/2 x 2	801- 292C	45.38
3 x 1/2	801- 333C	110.85
3 x 3/4	801- 334C	110.85
3 x 1	801- 335C	89.55
3 x 1 1/4	801- 336C	107.36
3 x 1 1/2	801- 337C	89.55
3 x 2	801- 338C	76.00
3 x 2 1/2	801- 339C	77.61
4 x 1/2	801- 415C	136.08
4 x 3/4	801- 416C	136.08
4 x 1	801- 417C	136.08
4 x 1 1/4	801- 418C	136.08
4 x 1 1/2	801- 419C	136.08
4 x 2	801- 420C	97.45
4 x 3	801- 422C	101.08
6 x 1	801- 525C	389.47
6 x 1 1/4	801- 526C	389.47
6 x 2 1/2	801- 527C	389.47
6 x 2	801- 528C	288.81
6 x 3	801- 530C	298.29
6 x 4	801- 532C	266.94
8 x 2	801- 578C	533.13
8 x 3	801- 580C	536.05
8 x 4	801- 582C	577.64
8 x 6	801- 585C	481.35
10 x 2	801- 621CF*	607.53
10 x 3	801- 623C*	883.96
10 x 4	801- 624C*	888.32
10 x 6	801- 626C*	1340.51
10 x 8	801- 628C*	1317.17
12 x 2	801- 661CF*	1022.52
12 x 3	801- 663CF*	1126.09
12 x 4	801- 664CF*	1172.75
12 x 6	801- 666C*	1492.22
12 x 8	801- 668C*	2087.35
12 x 10	801- 670C*	1913.77

Tee 45° (Wye)



Size	Code	Price
1/2	875- 005C	6.71
3/4	875- 007C	7.29
1	875- 010C	12.33
1 1/4	875- 012C	18.83
1 1/2	875- 015C	21.00
2	875- 020C	56.02
3	875- 030C*	221.72
4	875- 040C*	243.59
6	875- 060C*	364.67
8	875- 080CF*	1025.43
10	875- 100CF*	1740.19
12	875- 120CF*	2482.65
14	875- 140CF*	9011.60
16	875- 160CF*	10121.65

Reducing Tee 45° (Wye)



Size	Code	Price
4x2	875- 420C*	287.36
6x4	875- 532C*	281.54
8x2	875- 578CF*	702.35
8x3	875- 580CF*	732.26
8x4	875- 582CF*	755.59
8x6	875- 585CF*	870.83
10x2	875- 621CF*	730.79
10x3	875- 623CF*	761.43
10x4	875- 624CF*	1047.32
10x6	875- 626CF*	1197.56
10x8	875- 628CF*	1428.03
12x2	875- 661CF*	1425.59
12x3	875- 663CF*	1497.73
12x4	875- 664CF*	1708.47
12x6	875- 666CF*	1777.27
12x8	875- 668CF*	1786.85
12x10	875- 670CF*	2201.11

Street Tee 90°



Size	Code	Price
1/2	844- 005C	7.07
3/4	844- 007C	7.44
1	844- 010C	9.49
1 1/4	844- 012C	19.11
1 1/2	844- 015C	22.30
2	844- 020C	25.96



Double Wye

Size	Code	Price
2	876- 020CF	422.28
3	876- 030CF	538.24
3 x 2	876- 338C	323.83
4	876- 040CF	923.33
6	876- 060CF	1608.90
8	876- 080CF	2885.21
10	876- 100CF	3130.29
12	876- 120CF	4691.05

Maximum pressure 6 bar



Cross



Size	Code	Price
1/4	820- 002C	22.76
1/2	820- 005C	23.47
3/4	820- 007C	24.79
1	820- 010C	28.49
1 1/4	820- 012C	31.22
1 1/2	820- 015C	34.58
2	820- 020C	46.53
2 1/2	820- 025C	63.03
3	820- 030C	82.56
4	820- 040C	146.60
6	820- 060CF*	690.67
8	820- 080CF*	1302.58
10	820- 100CF*	1945.84
12	820- 120CF*	2982.97
14	820- 140CF*	8210.81
16	820- 160CF*	9786.15



Reducing Cross



Size	Code	Price
4x2	820- 420CF	261.83
6x2	820- 528CF	600.26
6x3	820- 530CF	680.47
6x4	820- 532CF	702.35
8x2	820- 578CF	776.00
8x3	820- 580CF	837.27
8x4	820- 582CF	794.97
8x6	820- 585CF	1044.41
10x2	820- 621CF	964.18
10x3	820- 623CF	1050.24
10x4	820- 624CF	1102.75
10x6	820- 626CF	1318.63
10x8	820- 628CF	1587.01
12x2	820- 661CF	1215.07
12x3	820- 663CF	1363.85
12x4	820- 664CF	1454.29
12x6	820- 666CF	1639.53
12x8	820- 668CF	1909.39
12x10	820- 670CF	2358.65



Elbow 90°



Size	Code	Price
1/4	806- 002C	5.90
3/8	806- 003C	5.99
1/2	806- 005C	2.70
3/4	806- 007C	3.51
1	806- 010C	5.54
1 1/4	806- 012C	11.61
1 1/2	806- 015C	13.86
2	806- 020C	16.47
2 1/2	806- 025C	36.18
3	806- 030C	42.73
4	806- 040C	76.88
6	806- 060C	169.93
8	806- 080C	388.73
10	806- 100C*	1042.93
12	806- 120C*	1439.70
14	806- 140CF*	5438.91
16	806- 160CF*	7302.06



Short Radius Bend 90°

Size	Code	Price
1/2	806- 005SC	4.80
3/4	806- 007SC	6.26
1	806- 010SC	10.06
1 1/4	806- 012SC	13.50
1 1/2	806- 015SC	14.88
2	806- 020SC	18.95

Street Elbow 90°

Size	Code	Price
1/2	809- 005C	3.20
3/4	809- 007C	4.16
1	809- 010C	6.64
1 1/4	809- 012C	13.72
1 1/2	809- 015C	15.75
2	809- 020C	19.55
3	809- 030C	56.89
4	809- 040C	106.34
6	809- 060C	224.62
8	809- 080C	514.91
10	809- 100C	1629.33
12	809- 120C	2239.05

Elbow 45°

Size	Code	Price
1/4	817- 002C	8.69
3/8	817- 003C	8.76
1/2	817- 005C	3.07
3/4	817- 007C	4.45
1	817- 010C	7.07
1 1/4	817- 012C	13.50
1 1/2	817- 015C	15.32
2	817- 020C	16.92
2 1/2	817- 025C	33.56
3	817- 030C	43.32
4	817- 040C	63.17
6	817- 060C	186.71
8	817- 080C	381.45
10	817- 100C*	794.97
12	817- 120C*	1391.56
14	817- 140CF*	2664.97
16	817- 160CF*	3888.79

Street Elbow 45°

Size	Code	Price
1/2	827- 005C	3.07
3/4	827- 007C	4.45
1	827- 010C	7.07
1 1/4	827- 012C	13.50
1 1/2	827- 015C	15.32
2	827- 020C	16.92
3	827- 030C	39.23
4	827- 040C	61.55
6	827- 060C	185.25
8	827- 080C	379.26
10	827- 100C*	980.22
12	827- 120C*	1722.68
14	827- 140CF*	3810.03
16	827- 160CF*	4873.39



Pressure Ratings

Items marked * carry a maximum pressure rating of 10 bar at 20°C.

plain fittings inch sizes

Elbow 30°



Size	Code	Price
2	815- 020CF	75.54
3	815- 030CF	110.20
4	815- 040CF	143.92
6	815- 060C	233.20
8	815- 080CF	511.99
10	815- 100CF	843.11
12	815- 120CF	1080.87
14	815- 140CF	2462.21
16	815- 160CF	3465.78



Elbow 22 1/2°



Size	Code	Price
1/2	816- 005C	4.30
3/4	816- 007C	6.26
1	816- 010C	9.91
1 1/4	816- 012C	19.40
1 1/2	816- 015C	20.00
2	816- 020C	21.59
3	816- 030C	56.16
4	816- 040C	78.78
6	816- 060C	242.14
8	816- 080C	495.94
10	816- 100CF	821.21
12	816- 120CF	1098.36
14	816- 140CF*	2462.21
16	816- 160CF*	3465.78



Street Elbow 22 1/2°



Size	Code	Price
1/2	842- 005C	4.95
3/4	842- 007C	7.65
1	842- 010C	11.97
1 1/4	842- 012C	15.01
1 1/2	842- 015C	21.59
2	842- 020C	27.28

Elbow 15°



Size	Code	Price
2	818- 020CF	88.43
3	818- 030CF	110.20
4	818- 040CF	143.92
6	818- 060CF	276.21
8	818- 080CF	465.31
10	818- 100CF	778.92
12	818- 120CF	1037.10
14	818- 140CF*	2462.21
16	818- 160CF*	3465.78

Elbow 11 1/4°



Size	Code	Price
2	811- 020C	21.00
3	811- 030C	55.14
4	811- 040C	75.69
6	811- 060CF	276.21
8	811- 080CF	467.50
10	811- 100CF	774.55
12	811- 120CF	1037.10
14	811- 140CF*	2462.21
16	811- 160CF*	3465.78

Socket

Size	Code	Price
1/4	829- 002C	6.21
3/8	829- 003C	6.35
1/2	829- 005C	2.76
3/4	829- 007C	3.86
1	829- 010C	5.11
1 1/4	829- 012C	7.87
1 1/2	829- 015C	10.06
2	829- 020C	11.45
2 1/2	829- 025C	25.38
3	829- 030C	28.01
4	829- 040C	38.96
6	829- 060C	91.01
8	829- 080C	232.66
10	829- 100C	332.56
12	829- 120C	412.80
14	829- 140C	492.31
16	829- 160CF	3010.68

Reducing Socket

Concentric		
3/4 x 1/2	829- 101C	6.55
1 x 1/2	829- 130C	9.41
1 x 3/4	829- 131C	9.41
1 1/4 x 1/2	829- 166C	21.00
1 1/4 x 3/4	829- 167C	21.00
1 1/4 x 1	829- 168C	21.16
1 1/2 x 1/2	829- 209C	21.16
1 1/2 x 3/4	829- 210C	21.16
1 1/2 x 1	829- 211C	21.16
1 1/2 x 1 1/4	829- 212C	21.16
2 x 1/2	829- 247C	28.14
2 x 3/4	829- 248C	28.14
2 x 1	829- 249C	28.01
2 x 1 1/4	829- 250C	28.01
2 x 1 1/2	829- 251C	28.01
2 1/2 x 1 1/2	829- 291C	37.62
2 1/2 x 2	829- 292C	37.62
3 x 1	829- 335C	99.64
3 x 1 1/4	829- 336C	102.68
3 x 1 1/2	829- 337C	102.68
3 x 2	829- 338C	64.62
3 x 2 1/2	829- 339CF	147.10
4 x 3/4	829- 416C	117.43
4 x 1	829- 417C	117.43
4 x 1 1/2	829- 419C	117.43
4 x 2	829- 420C	79.05
4 x 3	829- 422C	79.36
5 x 4	829- 490CF*	96.57
6 x 2	829- 528CF*	187.44
6 x 3	829- 530CF*	182.33
6 x 4	829- 532C	182.33
8 x 4	829- 582CF*	336.22
8 x 6	829- 585C	318.72
10 x 4	829- 624CF*	571.80
10 x 6	829- 626CF*	445.62
10 x 8	829- 628CF*	321.63
12 x 4	829- 664CF*	1386.98
12 x 6	829- 666CF*	1159.65
12 x 8	829- 668CF*	895.62
12 x 10	829- 670CF*	504.70

Reducing Socket

Eccentric



Size	Code	Price
3x2	829- 338CFE	77.30
4x2	829- 420CFE	172.85
4x3	829- 422CFE	111.88
6x2	829- 528CFE	349.34
6x3	829- 530CFE	279.34
6x4	829- 532CFE	208.60
8x4	829- 582CFE	522.92
8x6	829- 585CFE	452.92
10x4	829- 624CFE	1150.88
10x6	829- 626CFE	935.00
10x8	829- 628CFE	673.18
12x6	829- 666CFE	1318.63
12x8	829- 668CFE	1239.87
12x10	829- 670CFE	1102.75

Union

FPM O-Ring



Size	Code	Price
1/4	857- 002C	15.75
3/8	857- 003C	10.95
1/2	8057- 005C	10.95
3/4	8057- 007C	12.03
1	8057- 010C	14.72
1 1/4	8057- 012C	28.45
1 1/2	8057- 015C	29.47
2	8057- 020C	48.57
2 1/2	8057- 025C	79.20
3	8057- 030C	102.56
4	8057- 040C	135.23
6	8057- 060C	303.40

Reducing Bush



3/8 x 1/4	837- 052C	5.05
1/2 x 1/4	837- 072C	5.11
1/2 x 3/8	837- 073C	5.11
3/4 x 1/2	837- 101C	2.70
1 x 1/2	837- 130C	4.22
1 x 3/4	837- 131C	4.16
1 1/4 x 1/2	837- 166C	11.00
1 1/4 x 3/4	837- 167C	11.09
1 1/4 x 1	837- 168C	10.80
1 1/2 x 1/2	837- 209C	12.55
1 1/2 x 3/4	837- 210C	12.76
1 1/2 x 1	837- 211C	12.55
1 1/2 x 1 1/4	837- 212C	12.18
2 x 1/2	837- 247C	16.35
2 x 3/4	837- 248C	16.63
2 x 1	837- 249C	16.47
2 x 1 1/4	837- 250C	16.47
2 x 1 1/2	837- 251C	16.20
2 1/2 x 1 1/4	837- 290C	19.55
2 1/2 x 1 1/2	837- 291C	19.55
2 1/2 x 2	837- 292C	20.00
3 x 1	837- 335C	31.66
3 x 1 1/4	837- 336C	31.66
3 x 1 1/2	837- 337C	31.51
3 x 2	837- 338C	31.51
3 x 2 1/2	837- 339C	30.21
4 x 2	837- 420C	36.76
4 x 3	837- 422C	35.43
6 x 2	837- 528C	83.29
6 x 3	837- 530C	82.13
6 x 4	837- 532C	81.09
8 x 6	837- 585C	247.98
10 x 6	837- 626C	485.02
10 x 8	837- 628C	485.02
12 x 4	837- 664C	1051.70
12 x 8	837- 668C	611.49
12 x 10	837- 670CF	2786.80
14 x 12	837- 702CF	1209.23
16 x 12	837- 762CF	1766.45
16 x 14	837- 764CF	1681.83

Union

EPDM O-Ring



Size	Code	Price
1/4	897- 002C	15.60
3/8	897- 003C	15.75
1/2	8097- 005C	10.95
3/4	8097- 007C	11.88
1	8097- 010C	14.52
1 1/4	8097- 012C	28.14
1 1/2	8097- 015C	29.17
2	8097- 020C	47.99
2 1/2	8097- 025C	79.05
3	8097- 030C	101.37
4	8097- 040C	133.97
6	8097- 060C	306.32



Fabricated Fittings

Code numbers suffixed "F" indicate fabricated fittings.



Cap



1/4	847- 002C	4.16
3/8	847- 003C	4.24
1/2	847- 005C	3.86
3/4	847- 007C	5.54
1	847- 010C	9.77
1 1/4	847- 012C	11.00
1 1/2	847- 015C	11.00
2	847- 020C	12.61
2 1/2	847- 025C	38.80
3	847- 030C	44.06
4	847- 040C	47.84
6	847- 060C	150.23
8	847- 080C	435.41
10	847- 100CF*	695.79
12	847- 120CF*	770.17
14	847- 140CF*	2730.62
16	847- 160CF*	4015.69

Tank Adaptor

Plain Socket x Plain Socket
EPDM Gasket



1/4	8170E- 002C	38.80
3/8	8170E- 003C	38.80
1/2	8170E- 005C	39.09
3/4	8170E- 007C	43.91
1	8170E- 010C	51.35
1 1/4	8170E- 012C	64.77
1 1/2	8170E- 015C	69.59
2	8170E- 020C	99.64
3	8170E- 030C	170.67
4	8170E- 040C	279.34
6	8170E- 060C	704.97
8	8170E- 080C	1671.63

Tank Adaptor

Plain Socket x Plain Socket
FPM Gasket



1/4	8170V- 002C	50.75
3/8	8170V- 003C	50.75
1/2	8170V- 005C	51.06
3/4	8170V- 007C	58.78
1	8170V- 010C	68.26
1 1/4	8170V- 012C	83.73
1 1/2	8170V- 015C	89.99
2	8170V- 020C	133.91
3	8170V- 030C	231.21
4	8170V- 040C	503.97
6	8170V- 060C	1184.38
8	8170V- 080C	2952.34

Wrench Sets

Body Wrench and Nut Wrench for Tank
Adaptor



1/4	TAW- 002	16.85
3/8	TAW- 003	16.85
1/2	TAW- 005	17.01
3/4	TAW- 007	17.48
1	TAW- 010	18.23
1 1/4	TAW- 012	20.52
1 1/2	TAW- 015	22.78
2	TAW- 020	26.04
3	TAW- 030	32.02
4	TAW- 040	34.93

Elastomer Expansion Joint

EPDM Bellows



3/4	EJ22-007C	194.01
1	EJ22-010C	221.00
1 1/4	EJ22-012C	241.42
1 1/2	EJ22-015C	296.10
2	EJ22-020C	369.04
2 1/2	EJ22-025C	538.97
3	EJ22-030C	732.26

Expansion or Repair Joint

Solvent Socket Joints -
150mm or 300mm Travel

FPM Seals
150mm travel



Size	Code	Price
1/2	826-005X6C	286.63
3/4	826-007X6C	314.34
1	826-010X6C	340.59
1 1/4	826-012X6C	519.28
1 1/2	826-015X6C	392.29
2	826-020X6C	498.14
2 1/2	826-025X6C	844.57
3	826-030X6C	688.49
4	826-040X6C	1191.73
6	826-060X6C	1133.38
8	826-080X6C	2138.39
10	826-100X6C	2809.38

FPM Seals
300mm travel



Size	Code	Price
1/2	826-005X12C	293.19
3/4	826-007X12C	336.96
1	826-010X12C	360.29
1 1/4	826-012X12C	568.88
1 1/2	826-015X12C	455.11
2	826-020X12C	582.75
2 1/2	826-025X12C	872.28
3	826-030X12C	712.55
4	826-040X12C	1177.14
6	826-060X12C	1343.42
8	826-080X12C	2555.59
10	826-100X12C	3082.15

Tee 90°

Plain x NPT female thread



Size	Code	Price
1/4	802- 002C	16.35
1/2	802- 005C	16.35
3/4	802- 007C	18.83
1	802- 010C	23.78
2	802- 020C	36.46

Tee 90°

Plain x NPT female thread
ST/ST reinforced



1/2	802- 005CSR	13.12
1/2 x 1/4	802- 072CSR	12.99
3/4 x 1/4	802- 098CSR	17.35
3/4 x 1/2	802- 101CSR	17.51
1 x 1/4	802- 128CSR	35.16
1 1/4 x 1/4	802- 164CSR	46.82
1 1/4 x 1/2	802- 166CSR	37.05
1 1/2 x 1/4	802- 207CSR	66.94
1 1/2 x 1	802- 211CSR	44.49
2 x 1/4	802- 245CSR	76.88
3 x 1/4	802- 331CSR	147.32
4 x 1/4	802- 413CSR	159.73

Tee 90°

Plain x metal NPT female thread



1/2	802- 005CBR	27.41
3/4	802- 007CBR	53.54
3/4 x 1/2	802- 101CBR	33.56

Elbow 90°

Plain x NPT female thread



1/4	807- 002C	5.26
3/8	807- 003C	5.32
1/2	807- 005C	6.50
3/4	807- 007C	7.72
1	807- 010C	10.28
1 1/4	807- 012C	15.32
1 1/2	807- 015C	22.46
2	807- 020C	29.32

Elbow 90°

Plain x metal NPT female thread



1/2	807- 005CBR	23.78
3/4	807- 007CBR	41.42
3/4 x 1/2	807- 101CBR	29.75

Socket

Plain x NPT female thread



1/4	835- 002C	7.87
3/8	835- 003C	7.95
1/2	835- 005C	4.16
3/4	835- 007C	4.52
1	835- 010C	10.06
1 1/4	835- 012C	10.73
1 1/2	835- 015C	12.61
2	835- 020C	21.31
2 1/2	835- 025C	40.55
3	835- 030C	80.80
4	835- 040C	133.91
6	835- 060C	238.48
8	835- 080C	376.34

Socket

Plain x NPT female thread
ST/ST reinforced



Size	Code	Price
1/4	835- 002CSR	8.53
3/8	835- 003CSR	8.61
1/2	835- 005CSR	3.86
1/2 x 3/4	835- 074CSR	4.24
3/4 x 1/2	835- 101CSR	4.24
3/4	835- 007CSR	4.24
3/4 x 1	835- 102CSR	9.33
1	835- 010CSR	9.33
1 x 1/2	835- 130CSR	9.33
1 x 3/4	835- 131CSR	9.33
1 1/4	835- 012CSR	9.85
1 1/2	835- 015CSR	11.61
2	835- 020CSR	16.63
2 1/2	835- 025CSR	37.49
3	835- 030CSR	75.43
4	835- 040CSR	124.27
6	835- 060CSR	225.36

Socket

Plain x metal NPT female thread



1/2	835- 005CBR	14.88
3/4	835- 007CBR	30.33
3/4 x 1/2	835- 101CBR	21.31
1	835- 010CBR	53.10
1 1/4	835- 012CBR	113.62
1 1/2	835- 015CBR	150.23
2	835- 020CBR	187.44



Threaded Fittings

Threaded Schedule 80 fittings are de-rated to 50% of the normal working pressure, except for female brass or stainless steel threaded fittings which carry the full Schedule 80 pressure rating.

adaptor fittings inch sizes

Union

Plain x NPT female thread
FPM O-Ring



Size	Code	Price
1/2	8059- 005C	12.24
3/4	8059- 007C	21.59
1	8059- 010C	29.90
1 1/4	8059- 012C	55.72
1 1/2	8059- 015C	56.31
2	8059- 020C	65.21
2 1/2	8059- 025C	105.60
3	8059- 030C	127.78
4	8059- 040C	153.89



Union

Plain x NPT female thread
EPDM O-Ring



Size	Code	Price
1/2	8099- 005C	11.97
3/4	8099- 007C	21.16
1	8099- 010C	29.17
1 1/4	8099- 012C	54.84
1 1/2	8099- 015C	55.28
2	8099- 020C	64.33
2 1/2	8099- 025C	104.44
3	8099- 030C	126.18
4	8099- 040C	151.69



Union

Plain x NPT female thread
ST/ST reinforced
FPM O-Ring



Size	Code	Price
1/4	859- 002CSR	16.77
3/8	859- 003CSR	16.63
1/2	8059- 005CSR	10.87
3/4	8059- 007CSR	18.95
1	8059- 010CSR	26.27
1 1/4	8059- 012CSR	49.44
1 1/2	8059- 015CSR	54.27
2	8059- 020CSR	57.62
2 1/2	8059- 025CSR	84.85
3	8059- 030CSR	161.18
4	8059- 040CSR	191.81



Union

Plain x NPT female thread
ST/ST reinforced
EPDM O-Ring



Size	Code	Price
1/4	899- 002CSR	16.47
3/8	899- 003CSR	16.20
1/2	8099- 005CSR	10.58
3/4	8099- 007CSR	18.23
1	8099- 010CSR	25.52
1 1/4	8099- 012CSR	48.88
1 1/2	8099- 015CSR	53.54
2	8099- 020CSR	56.74
2 1/2	8099- 025CSR	74.70
3	8099- 030CSR	120.91
4	8099- 040CSR	272.77

Union

Plain x metal NPT female thread
FPM O-Ring



Size	Code	Price
1	859- 010CBR	75.37
1 1/4	859- 012CBR	125.45
1 1/2	859- 015CBR	142.07
2	859- 020CBR	163.38

EPDM O-Ring

Size	Code	Price
1	899- 010CBR	74.38
1 1/4	899- 012CBR	123.99
1 1/2	899- 015CBR	140.03
2	899- 020CBR	160.45

Adaptor

Plain Spigot x NPT female thread
ST/ST reinforced

Size	Code	Price
1/2x1/4	878- 072CSR	11.16
1/2	878- 005CSR	4.08
3/4	878- 007CSR	4.37
1	878- 010CSR	9.62
1x1/4	878- 128CSR	13.06
1 1/4	878- 012CSR	10.15
1 1/2	878- 015CSR	11.88
2	878- 020CSR	16.63
3	878- 030CSR	76.14
4	878- 040CSR	127.05

Adaptor

Plain Socket x NPT male thread

Size	Code	Price
1/2	836- 005C	3.30
3/4	836- 007C	4.08
1	836- 010C	6.86
1 1/4	836- 012C	10.06
1 1/2	836- 015C	13.56
2	836- 020C	18.38
2 1/2	836- 025C	49.16
3	836- 030C	66.23
4	836- 040C	112.47
6	836- 060CF	257.45

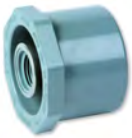
Reducing Bush

Spigot x NPT female thread

Size	Code	Price
3/8 x 1/4	838- 052C	5.40
1/2 x 1/8	838- 071C	5.47
1/2 x 1/4	838- 072C	5.47
1/2 x 3/8	838- 073C	5.47
3/4 x 1/4	838- 098C	6.21
3/4 x 1/2	838- 101C	2.92
1 x 3/8	838- 129C	8.25
1 x 1/2	838- 130C	3.86
1 x 3/4	838- 131C	3.79
1 1/4 x 1/2	838- 166C	11.88
1 1/4 x 3/4	838- 167C	11.88
1 1/4 x 1	838- 168C	11.74
1 1/2 x 1/2	838- 209C	14.88
1 1/2 x 3/4	838- 210C	14.72
1 1/2 x 1	838- 211C	14.72
1 1/2 x 1 1/4	838- 212C	14.37
2 x 1/2	838- 247C	20.56
2 x 3/4	838- 248C	20.56
2 x 1	838- 249C	20.56
2 x 1 1/4	838- 250C	20.43
2 x 1 1/2	838- 251C	20.11
2 1/2 x 1 1/2	838- 287C	32.82
2 1/2 x 3/4	838- 288C	32.97
2 1/2 x 1	838- 289C	32.82
2 1/2 x 1 1/4	838- 290C	32.82
2 1/2 x 1 1/2	838- 291C	32.82
2 1/2 x 2	838- 292C	31.95
3 x 3/4	838- 334C	84.16
3 x 1	838- 335C	83.73
3 x 1 1/4	838- 336C	73.96
3 x 1 1/2	838- 337C	73.81
3 x 2	838- 338C	70.90
3 x 2 1/2	838- 339C	70.60
4 x 2	838- 420C	142.52
4 x 2 1/2	838- 421C	143.38
4 x 3	838- 422C	142.22
6 x 3	838- 530C	292.45
6 x 4	838- 532C	291.71

Reducing Bush

Spigot x NPT female thread
ST/ST reinforced



Size	Code	Price
1 x 1/4	838-128CSR	9.91
1 1/2 x 1/2	838-209CSR	17.51
1 1/2 x 3/4	838-210CSR	17.51
2 x 1/2	838-247CSR	24.22
2 x 3/4	838-248CSR	24.22
2 x 1	838-249CSR	24.22
3 x 3/4	838-334CSR	100.49
3 x 1	838-335CSR	100.49
3 x 1 1/4	838-336CSR	100.49
3 x 1 1/2	838-337CSR	100.49

Grooved Coupling Adaptor

Groove joint x pvc-c plain socket



1 1/4	833- 012C	11.52
1 1/2	833- 015C	15.01
2	833- 020C	19.84
2 1/2	833- 025C	32.67
3	833- 030C	40.55
4	833- 040C	69.73
6	833- 060C	104.74

Nipple

Spigot x NPT male thread



Size	Code	Price
1/4	880-1- 015C	1.97
3/8	881-1- 015C	2.34
1/2	882-1- 020C	2.54
3/4	883-1- 020C	3.14
1	884-1- 030C	4.52
1 1/4	885-1- 035C	7.29
1 1/2	886-1- 035C	7.87
2	887-1- 040C	10.50
2 1/2	888-1- 050C	21.44
3	889-1- 050C	26.70
4	890-1- 060C	43.62



Hose Adaptor

Hose spigot x NPT male

1/2	1436- 005C	2.58
3/4	1436- 007C	3.14
1	1436- 010C	3.21
1 1/4	1436- 012C	4.83
1 1/2	1436- 015C	5.73
2	1436- 020C	10.95

Hexagon Nipple

Spigot x NPT male thread



Size	Code	Price
1/2	861- 005C	3.95
3/4	861- 007C	8.17
1	861- 010C	8.40
1 1/4	861- 012C	9.77
1 1/2	861- 015C	10.87
2	861- 020C	12.99

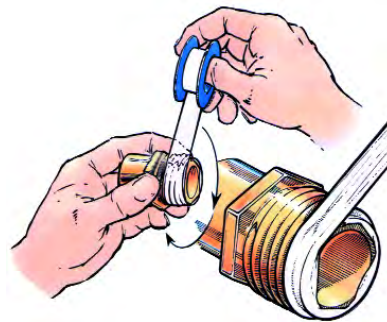


Making Threaded Joints

We recommend the use of PTFE tape or Blue 75 Joint Compound for all threaded joints on plastic piping. Please check with our technical department before using any other type of pipe joint compounds, as these can cause stress cracking and lead to failure of the system.

When using PTFE tape, follow the following guidelines:

- Always wrap tape clockwise
- Apply 2 to 3 wraps
- Tighten hand-tight plus 1 1/2 to 2 turns
- Do not overtighten



PTFE Tape

BS7786

Roll Size mm	Code	Price
12x12x0.075	767-120	0.87



Blue 75

Size	Code	Price
1 Pint	768-301	20.64





CPVC Clamp Saddle

	Plain socket outlet EPDM O-Ring Zinc Plated Hardware		Plain socket outlet FPM O-Ring Zinc Plated Hardware		Plain socket outlet EPDM O-Ring Stainless Steel Hardware		Plain socket outlet FPM O-Ring Stainless Steel Hardware	
2 x 1/2	866- 247C	37.20	866V- 247C	38.67	866S- 247C	56.16	866SV- 247C	58.34
2 x 3/4	866- 248C	37.20	866V- 248C	38.67	866S- 248C	56.16	866SV- 248C	58.34
2 x 1	866- 249C	37.20	866V- 249C	38.67	866S- 249C	56.16	866SV- 249C	58.34
2 x 1 1/4	866- 250C	37.20	866V- 250C	38.67	866S- 250C	56.16	866SV- 250C	58.34
2 x 1 1/2	866- 251C	37.20	866V- 251C	38.67	866S- 251C	56.16	866SV- 251C	58.34
2 1/2 x 1 1/2	866- 291C	50.33	866V- 291C	53.99	866S- 291C	75.85	866SV- 291C	78.05
3 x 1/2	866- 333C	50.33	866V- 333C	53.99	866S- 333C	75.85	866SV- 333C	78.05
3 x 3/4	866- 334C	50.33	866V- 334C	53.99	866S- 334C	75.85	866SV- 334C	78.05
3 x 1	866- 335C	50.33	866V- 335C	53.99	866S- 335C	75.85	866SV- 335C	78.05
3 x 1 1/4	866- 336C	50.33	866V- 336C	53.99	866S- 336C	75.85	866SV- 336C	78.05
3 x 1 1/2	866- 337C	50.33	866V- 337C	53.99	866S- 337C	75.85	866SV- 337C	78.05
3 x 2	866- 338C	50.33	866V- 338C	53.99	866S- 338C	75.85	866SV- 338C	78.05
4 x 1/2	866- 415C	61.27	866V- 415C	65.65	866S- 415C	97.73	866SV- 415C	101.37
4 x 3/4	866- 416C	61.27	866V- 416C	65.65	866S- 416C	97.73	866SV- 416C	101.37
4 x 1	866- 417C	61.27	866V- 417C	65.65	866S- 417C	97.73	866SV- 417C	101.37
4 x 1 1/4	866- 418C	61.27	866V- 418C	65.65	866S- 418C	97.73	866SV- 418C	101.37
4 x 1 1/2	866- 419C	61.27	866V- 419C	65.65	866S- 419C	97.73	866SV- 419C	101.37
4 x 2	866- 420C	61.27	866V- 420C	65.65	866S- 420C	97.73	866SV- 420C	101.37
4 x 2 1/2	866- 421C	72.20	866V- 421C	75.85	866S- 421C	105.76	866SV- 421C	112.32
4 x 3	866- 422C	78.05	866V- 422C	80.22	866S- 422C	109.70	866SV- 422C	116.68
6 x 1/2	866- 523C	105.02	866V- 523C	103.39	866S- 523C	153.89	866SV- 523C	162.65
6 x 3/4	866- 524C	105.02	866V- 524C	103.39	866S- 524C	153.89	866SV- 524C	162.65
6 x 1	866- 525C	105.02	866V- 525C	103.39	866S- 525C	153.89	866SV- 525C	162.65
6 x 1 1/4	866- 526C	105.02	866V- 526C	113.77	866S- 526C	153.89	866SV- 526C	162.65
6 x 1 1/2	866- 527C	105.02	866V- 527C	113.77	866S- 527C	153.89	866SV- 527C	162.65
6 x 2	866- 528C	105.02	866V- 528C	113.77	866S- 528C	153.89	866SV- 528C	162.65
6 x 2 1/2	866- 529C	119.92	866V- 529C	127.62	866S- 529C	179.98	866SV- 529C	177.22
6 x 3	866- 530C	126.02	866V- 530C	133.48	866S- 530C	179.41	866SV- 530C	181.61
6 x 4	866- 532C	136.23	866V- 532C	143.67	866S- 532C	189.62	866SV- 532C	194.73
8 x 1/2	866- 573C	241.42	866V- 573C	250.89	866S- 573C	306.32	866SV- 573C	317.25
8 x 3/4	866- 574C	241.42	866V- 574C	250.89	866S- 574C	306.32	866SV- 574C	317.25
8 x 1	866- 575C	241.42	866V- 575C	250.89	866S- 575C	306.32	866SV- 575C	317.25
8 x 1 1/4	866- 576C	241.42	866V- 576C	250.16	866S- 576C	306.32	866SV- 576C	317.25
8 x 1 1/2	866- 577C	241.42	866V- 577C	250.16	866S- 577C	306.32	866SV- 577C	317.25
8 x 2	866- 578C	239.95	866V- 578C	249.44	866S- 578C	305.60	866SV- 578C	315.81
8 x 2 1/2	866- 579C	261.10	866V- 579C	272.05	866S- 579C	333.31	866SV- 579C	344.98
8 x 3	866- 580C	271.31	866V- 580C	282.25	866S- 580C	346.43	866SV- 580C	358.83
8 x 4	866- 582C	282.98	866V- 582C	301.21	866S- 582C	362.47	866SV- 582C	375.60
8 x 6	866- 585C	315.06	866V- 585C	327.47	866S- 585C	403.32	866SV- 585C	417.91
10 x 4	866- 624C	377.06	866V- 624C	392.39	866S- 624C	482.10	866SV- 624C	499.59
10 x 6	866- 626C	431.03	866V- 626C	448.54	866S- 626C	552.10	866SV- 626C	571.80
12 x 4	866- 664C	474.80	866V- 664C	493.75	866S- 664C	606.81	866SV- 664C	628.68
12 x 6	866- 666C	544.82	866V- 666C	522.92	866S- 666C	697.98	866SV- 666C	723.50



Clamp Saddle Assembly

Clamp Saddles are quick and easy to assemble. They provide a simple, low cost alternative to a Branch Tee. Ensure that the pipe is de-pressurised and drained prior to fitting.



CPVC Clamp Saddle

	NPT female threaded outlet EPDM O-Ring Zinc Plated Hardware		NPT female threaded outlet FPM O-Ring Zinc Plated Hardware		NPT female threaded outlet EPDM O-Ring Stainless Steel Hardware		NPT female threaded outlet FPM O-Ring Stainless Steel Hardware	
2 x 1/2	867- 247CSR	38.51	867V- 247CSR	44.49	867S- 247CSR	64.48	867SV- 247CSR	71.49
2 x 3/4	867- 248CSR	38.51	867V- 248CSR	44.49	867S- 248CSR	64.48	867SV- 248CSR	71.49
2 x 1	867- 249CSR	38.51	867V- 249CSR	44.49	867S- 249CSR	64.48	867SV- 249CSR	71.49
2 x 1 1/4	867- 250CSR	38.51	867V- 250CSR	44.49	867S- 250CSR	64.48	867SV- 250CSR	71.49
2 x 1 1/2	867- 251CSR	38.51	867V- 251CSR	44.49	867S- 251CSR	64.48	867SV- 251CSR	71.49
2 1/2 x 1 1/2	867- 291CSR	53.67	867V- 291CSR	62.73	867S- 291CSR	87.52	867SV- 291CSR	96.28
3 x 1/2	867- 333CSR	53.67	867V- 333CSR	62.73	867S- 333CSR	87.52	867SV- 333CSR	96.28
3 x 3/4	867- 334CSR	53.67	867V- 334CSR	62.73	867S- 334CSR	87.52	867SV- 334CSR	96.28
3 x 1	867- 335CSR	53.67	867V- 335CSR	62.73	867S- 335CSR	87.52	867SV- 335CSR	96.28
3 x 1 1/4	867- 336CSR	53.67	867V- 336CSR	62.73	867S- 336CSR	87.52	867SV- 336CSR	96.28
3 x 1 1/2	867- 337CSR	53.67	867V- 337CSR	62.73	867S- 337CSR	87.52	867SV- 337CSR	96.28
3 x 2	867- 338CSR	53.67	867V- 338CSR	62.73	867S- 338CSR	87.52	867SV- 338CSR	96.28
4 x 1/2	867- 415CSR	68.56	867V- 415CSR	78.78	867S- 415CSR	110.85	867SV- 415CSR	122.51
4 x 3/4	867- 416CSR	68.56	867V- 416CSR	78.78	867S- 416CSR	110.85	867SV- 416CSR	122.51
4 x 1	867- 417CSR	68.56	867V- 417CSR	78.78	867S- 417CSR	110.85	867SV- 417CSR	122.51
4 x 1 1/4	867- 418CSR	68.56	867V- 418CSR	78.78	867S- 418CSR	110.85	867SV- 418CSR	122.51
4 x 1 1/2	867- 419CSR	68.56	867V- 419CSR	78.78	867S- 419CSR	110.85	867SV- 419CSR	122.51
4 x 2	867- 420CSR	68.56	867V- 420CSR	78.78	867S- 420CSR	110.85	867SV- 420CSR	122.51
4 x 2 1/2	867- 421CSR	80.22	867V- 421CSR	89.28	867S- 421CSR	121.95	867SV- 421CSR	133.17
4 x 3	867- 422CSR	88.39	867V- 422CSR	95.70	867S- 422CSR	125.86	867SV- 422CSR	138.43
6 x 1/2	867- 523CSR	113.77	867V- 523CSR	130.56	867S- 523CSR	186.71	867SV- 523CSR	207.11
6 x 3/4	867- 524CSR	113.77	867V- 524CSR	130.56	867S- 524CSR	186.71	867SV- 524CSR	207.11
6 x 1	867- 525CSR	113.77	867V- 525CSR	130.56	867S- 525CSR	186.71	867SV- 525CSR	207.11
6 x 1 1/4	867- 526CSR	113.77	867V- 526CSR	130.56	867S- 526CSR	186.71	867SV- 526CSR	207.11
6 x 1 1/2	867- 527CSR	113.77	867V- 527CSR	130.56	867S- 527CSR	186.71	867SV- 527CSR	207.11
6 x 2	867- 528CSR	113.77	867V- 528CSR	130.56	867S- 528CSR	186.71	867SV- 528CSR	207.11
6 x 2 1/2	867- 529CSR	128.06	867V- 529CSR	148.06	867S- 529CSR	199.84	867SV- 529CSR	223.91
6 x 3	867- 530CSR	132.88	867V- 530CSR	151.69	867S- 530CSR	204.94	867SV- 530CSR	230.47
6 x 4	867- 532CSR	147.32	867V- 532CSR	164.82	867S- 532CSR	216.61	867SV- 532CSR	249.44
8 x 1/2	867- 573CSR	253.82	867V- 573CSR	276.43	867S- 573CSR	344.24	867SV- 573CSR	371.95
8 x 3/4	867- 574CSR	253.82	867V- 574CSR	275.70	867S- 574CSR	344.24	867SV- 574CSR	371.95
8 x 1	867- 575CSR	253.82	867V- 575CSR	276.43	867S- 575CSR	344.24	867SV- 575CSR	371.95
8 x 1 1/4	867- 576CSR	253.82	867V- 576CSR	275.70	867S- 576CSR	344.24	867SV- 576CSR	371.95
8 x 1 1/2	867- 577CSR	253.82	867V- 577CSR	275.70	867S- 577CSR	344.24	867SV- 577CSR	371.23
8 x 2	867- 578CSR	253.08	867V- 578CSR	274.94	867S- 578CSR	343.51	867SV- 578CSR	370.49
8 x 2 1/2	867- 579CSR	274.94	867V- 579CSR	299.76	867S- 579CSR	374.88	867SV- 579CSR	404.77
8 x 3	867- 580CSR	288.09	867V- 580CSR	311.42	867S- 580CSR	390.92	867SV- 580CSR	422.28
8 x 4	867- 582CSR	301.21	867V- 582CSR	326.76	867S- 582CSR	409.16	867SV- 582CSR	442.72
10 x 4	867- 624CSR	365.38	867V- 624CSR	396.02	867S- 624CSR	494.49	867SV- 624CSR	534.61
10 x 6	867- 626CSR	417.17	867V- 626CSR	452.92	867S- 626CSR	565.94	867SV- 626CSR	611.91
12 x 4	867- 664CSR	460.19	867V- 664CSR	498.14	867S- 664CSR	622.12	867SV- 664CSR	671.71
12 x 6	867- 666CSR	528.03	867V- 666CSR	572.53	867S- 666CSR	715.47	867SV- 666CSR	773.09



Pressure Ratings

CPVC saddles are suitable for use at working pressures of up to 16 bar at 20°C for sizes 2" to 4", 13.5 bar at 20°C for size 6", and 10 bar at 20°C for sizes 8" to 12".

threaded fittings inch sizes

Tee 90°

NPT female threaded



Size	Code	Price
1/4	805- 002C	11.97
3/8	805- 003C	12.03
1/2	805- 005C	12.40
3/4	805- 007C	17.81
1	805- 010C	20.00
1 1/4	805- 012C	20.86
1 1/2	805- 015C	22.30
2	805- 020C	25.82
2 1/2	805- 025C	112.90
3	805- 030C	134.77
4	805- 040C	309.24

Tee 90°

NPT female threaded
ST/ST reinforced



Size	Code	Price
1/4	805- 002CSR	13.50
1/2	805- 005CSR	18.38
3/4	805- 007CSR	21.00
1	805- 010CSR	31.66
1 1/2	805- 015CSR	34.58
2	805- 020CSR	39.22

Elbow 90°

NPT female threaded



1/4	808- 002C	6.26
3/8	808- 003C	6.26
1/2	808- 005C	4.08
3/4	808- 007C	6.05
1	808- 010C	8.53
1 1/4	808- 012C	16.35
1 1/2	808- 015C	18.23
2	808- 020C	24.66
2 1/2	808- 025C	69.43
3	808- 030C	77.45
4	808- 040C	122.83

Elbow 90°

NPT female threaded
ST/ST reinforced



1/2	808- 005CSR	3.07
3/4	808- 007CSR	4.45
1	808- 010CSR	5.84
1 1/4	808- 012CSR	11.16
1 1/2	808- 015CSR	13.56
2	808- 020CSR	18.52

Elbow 45°

NPT female threaded



1/4	819- 002C	8.17
3/8	819- 003C	8.25
1/2	819- 005C	7.95
3/4	819- 007C	8.90
1	819- 010C	10.00
1 1/4	819- 012C	16.92
1 1/2	819- 015C	17.35
2	819- 020C	23.04
2 1/2	819- 025C	51.19
3	819- 030C	65.79
4	819- 040C	102.84

Socket

NPT female threaded ST/ST reinforced



1/2	830- 005CSR	6.26
3/4	830- 007CSR	10.00
1	830- 010CSR	11.45
1 1/4	830- 012CSR	12.33
1 1/2	830- 015CSR	13.42
2	830- 020CSR	16.20

Socket

NPT female threaded



1/4	830- 002C	7.81
3/8	830- 003C	7.87
1/2	830- 005C	6.71
3/4	830- 007C	10.64
1	830- 010C	12.33
1 1/4	830- 012C	13.35
1 1/2	830- 015C	14.72
2	830- 020C	17.35
2 1/2	830- 025C	31.35
3	830- 030C	38.08
4	830- 040C	73.96
6	830- 060CF	216.61

Reducing Socket

NPT female threaded
ST/ST reinforced



Size	Code	Price
3/4 x 1/2	830-101CSR	14.52
1 x 1/2	830-130CSR	17.51
1 x 3/4	830-131CSR	17.51
1 1/4 x 1	830-168CSR	23.78
1 1/2 x 3/4	830-210CSR	33.98
1 1/2 x 1	830-211CSR	33.98
1 1/2 x 1 1/4	830-212CSR	33.98
2 x 1	830-249CSR	83.57
2 x 1 1/2	830-251CSR	83.57

Nipple

NPT male threaded



1/4	880- 015C	1.97
3/8	881- 015C	2.34
1/2	882- 020C	2.54
3/4	883- 020C	3.14
1	884- 030C	4.52
1 1/4	885- 035C	7.29
1 1/2	886- 035C	7.87
2	887- 040C	10.50
2 1/2	888- 050C	21.44
3	889- 050C	26.70
4	890- 060C	43.62

Union

NPT female threaded - FPM O-Ring



1/2	8058- 005C	11.74
3/4	8058- 007C	20.71
1	8058- 010C	28.59
1 1/4	8058- 012C	53.54
1 1/2	8058- 015C	53.99
2	8058- 020C	62.57
2 1/2	8058- 025C	100.81
3	8058- 030C	174.30
4	8058- 040C	209.32

Union

NPT female threaded ST/ST reinforced FPM O-Ring



1/2	8058- 005CSR	13.06
3/4	8058- 007CSR	22.76
1	8058- 010CSR	31.35
1 1/4	8058- 012CSR	58.34
1 1/2	8058- 015CSR	63.89
2	8058- 020CSR	68.70
3	8058- 030CSR	192.54
4	8058- 040CSR	229.73

Union

NPT female threaded - EPDM O-Ring



1/2	8098- 005C	11.61
3/4	8098- 007C	20.56
1	8098- 010C	28.30
1 1/4	8098- 012C	52.82
1 1/2	8098- 015C	53.39
2	8098- 020C	61.98
2 1/2	8098- 025C	88.25
3	8098- 030C	191.81
4	8098- 040C	205.67

Union

NPT female threaded ST/ST reinforced EPDM O-Ring



1/2	8098- 005CSR	12.70
3/4	8098- 007CSR	22.61
1	8098- 010CSR	31.07
1 1/4	8098- 012CSR	57.78
1 1/2	8098- 015CSR	63.45
2	8098- 020CSR	67.98
2 1/2	8098- 025CSR	116.84
3	8098- 030CSR	189.62
4	8098- 040CSR	223.91

Plug

NPT male threaded



1/4	850- 002C	3.95
3/8	850- 003C	3.95
1/2	850- 005C	3.51
3/4	850- 007C	4.37
1	850- 010C	7.22
1 1/4	850- 012C	10.87
1 1/2	850- 015C	9.26
2	850- 020C	12.84
2 1/2	850- 025C	21.74
3	850- 030C	23.91
4	850- 040C	28.87



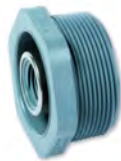
Reducing Bush

NPT male x NPT female thread

3/8 x 1/4	839- 052C	7.22
1/2 x 1/4	839- 072C	7.29
1/2 x 3/8	839- 073C	7.22
3/4 x 1/4	839- 098C	8.09
3/4 x 3/8	839- 099C	8.09
3/4 x 1/2	839- 101C	3.51
1 x 1/4	839- 128C	8.82
1 x 3/8	839- 129C	8.82
1 x 1/2	839- 130C	5.99
1 x 3/4	839- 131C	5.99
1 1/4 x 1/2	839- 166C	11.82
1 1/4 x 3/4	839- 167C	11.74
1 1/4 x 1	839- 168C	11.61
1 1/2 x 1/2	839- 209C	14.21
1 1/2 x 3/4	839- 210C	14.29
1 1/2 x 1	839- 211C	14.21
1 1/2 x 1 1/4	839- 212C	13.86
2 x 1/2	839- 247C	16.20
2 x 3/4	839- 248C	16.20
2 x 1	839- 249C	16.20
2 x 1 1/4	839- 250C	16.05
2 x 1 1/2	839- 251C	14.21
2 1/2 x 2	839- 292C	37.62
3 x 1 1/2	839- 337C	51.78
3 x 2	839- 338C	51.48
3 x 2 1/2	839- 339C	50.75
4 x 2	839- 420C	88.25
4 x 3	839- 422C	87.52

Reducing Bush

NPT male x NPT female threaded ST/ST reinforced



Size	Code	Price
1 1/2 x 1/2	839-209CSR	17.08
1 1/2 x 3/4	839-210CSR	17.08
2 x 1/2	839-247CSR	19.27
2 x 3/4	839-248CSR	19.27
2 x 1	839-249CSR	19.27
4 x 2	839-420CSR	105.16

Cap

NPT female threaded



1/4	848- 002C	4.90
3/8	848- 003C	4.90
1/2	848- 005C	4.30
3/4	848- 007C	7.14
1	848- 010C	10.06
1 1/4	848- 012C	17.65
1 1/2	848- 015C	18.38
2	848- 020C	26.55
2 1/2	848- 025C	60.70
3	848- 030C	80.54
4	848- 040C	117.00

PTFE Tape

BS7786



Roll Size: 12m x 12mm x 0.075mm
Order Code: 767-120
Price: 0.87



Threaded Fittings

We recommend the use of PTFE tape or Blue 75 Joint Compound for all threaded joints on plastic piping. Please check with our technical department before using any other type of pipe joint compounds, as these can cause stress cracking and lead to failure of the system.

Full Face Flange

Plain Socket - Drilled ANSI 150



1/2	851- 005C	11.16
3/4	851- 007C	11.82
1	851- 010C	13.35
1 1/4	851- 012C	15.90
1 1/2	851- 015C	18.52
2	851- 020C	23.47
2 1/2	851- 025C	46.24
3	851- 030C	49.44
4	851- 040C	69.28
6	851- 060C	114.36
8	851- 080C	249.44

Stub Flange

Plain Socket



1/2	854-005-2C	7.95
3/4	854-007-2C	8.82
1	854-010-2C	9.85
1 1/4	854-012-2C	10.95
1 1/2	854-015-2C	12.11
2	854-020-2C	15.75
2 1/2	854-025-2C	27.28
3	854-030-2C	28.59
4	854-040-2C	38.51
6	854-060-2C	68.85
8	854-080-2C	143.53
10	854-100-2C	707.45
12	854-120-2C	1209.23

*See Note

Full Face Flange

NPT Female Threaded - Drilled ANSI 150



1/2	852- 005CSR	14.00
3/4	852- 007CSR	17.35
1	852- 010CSR	18.95
1 1/4	852- 012CSR	26.11
1 1/2	852- 015CSR	28.01
2	852- 020CSR	30.33
2 1/2	852- 025CSR	48.88
3	852- 030CSR	49.59
4	852- 040CSR	76.88

Stub & Backing Ring

Plain Spigot - Drilled ANSI 150



1/2	856- 005C	12.70
3/4	856- 007C	13.93
1	856- 010C	16.35
1 1/4	856- 012C	19.84
1 1/2	856- 015C	22.46
2	856- 020C	32.39
2 1/2	856- 025C	50.33
3	856- 030C	57.19
4	856- 040C	61.42
6	856- 060C	125.60
8	856- 080C	250.89
10	856- 100C	1255.90
12	856- 120C	1877.30

Van Stone Style Plastic Ring

Stub & Backing Ring

Plain Socket - Drilled ANSI 150



1/2	854- 005C	11.09
3/4	854- 007C	11.52
1	854- 010C	13.20
1 1/4	854- 012C	15.90
1 1/2	854- 015C	18.08
2	854- 020C	23.35
2 1/2	854- 025C	45.38
3 D&E	854- 030CE	49.74
3 PN10	854- 030CN	49.74
3 ASA	854- 030C	49.74
4*	854- 040CM	66.08
6*	854- 060CM	113.21
8*	854- 080CM	308.51
10	854- 100C	1161.09
12	854- 120C	1735.80
14	854- 140C	1995.45
16	854- 160C	2497.22

Van Stone Style Plastic Ring.
Also available NPT Female Threaded

Drilled ANSI 150
except * which are
universal drilled:-
BS 4504 EN1072 PN10
BS10 Table D & E
ASA 150

Blind Flange

Drilled ANSI 150



1/2	853- 005C*	15.90
3/4	853- 007C*	17.81
1	853- 010C*	21.87
1 1/4	853- 012C*	25.10
1 1/2	853- 015C*	35.58
2	853- 020C*	37.92
2 1/2	853- 025C*	59.38
3	853- 030C*	58.64
4	853- 040C*	99.92
6	853- 060C*	162.65
8	853- 080C*	300.49
10	853- 100C*	595.15
12	853- 120C*	984.59
14	853- 140CF*	2256.55
16	853- 160CF*	3497.87



Flange Pressure Ratings

Flanges drilled ANSI 150 are suitable for use at working pressures of up to 10 bar at 20°C.

*Note that the stub flange, when used with an appropriate steel backing ring, is suitable for use at 16 bar, for sizes 1/2" to 4", and 10 bar for larger.

Backing Ring Table D/E

Galvanised Mild Steel

Size	Code	Price
1/2	860-005-11E	5.71
3/4	860-007-11E	6.47
1	860-010-11E	6.79
1 1/4	860-012-11E	7.00
1 1/2	860-015-11E	8.59
2	860-020-11E	12.18
2 1/2	860-025-11E	18.20
3	860-030-11E	18.20
4 Table D	860-040-11D	23.91
4 Table E	860-040-11E	23.91
5	860-050-11E	36.85
6	860-060-11E	40.45
8	860-080-11E	54.73
10	860-100-11E	77.42
12	860-120-11E	114.24
14	860-140-11E	318.60
16	860-160-11E	391.06



Stub Gasket

EPDM

Size	Code	Price
1/2	861--005	0.50
3/4	861--007	0.58
1	861--010	0.64
1 1/4	861--012	0.80
1 1/2	861--015	0.96
2	861--020	1.65
2 1/2	861--025	2.02
3	861--030	2.17
4	861--040	3.16
5	861--050	4.07
6	861--060	4.66
8	861--081	9.25
10	861--280	11.34
12	861--120	12.86

Complete code when ordering
Insert 'ISO' for NP10/16; 'A' for ANSI
150; 'E' for Table D/E

Stub Gasket

FPM

Size	Code	Price
1/2	862--005	2.34
3/4	862--007	3.48
1	862--010	4.59
1 1/4	862--012	7.36
1 1/2	862--015	8.05
2	862--020	10.60
2 1/2	862--075	14.73
3	862--030	20.01
4	862--040	34.13
5	862--050	56.98
6	862--060	56.98
8	862--081	68.24
10	862--280	92.89
12	862--120	96.97

Complete code when ordering
Insert 'ISO' for NP10/16; 'A' for ANSI
150; 'E' for Table D/E

Gasket

EPDM - full face

Size	Code	Price
1/2	863--005	1.74
3/4	863--007	1.96
1	863--010	2.34
1 1/4	863--012	2.79
1 1/2	863--015	3.31
2	863--020	4.07
3	863--030	5.71
4	863--040	7.98
6	863--060	12.86
8	863--081	15.19
10	863--280	25.57
12	863--120	35.47

Complete code when ordering
Insert 'ISO' for NP10/16; 'A' for ANSI
150; 'E' for Table D/E

Gasket

FPM - full face

Size	Code	Price
1/2	864--005	13.82
3/4	864--007	15.93
1	864--010	19.84
1 1/4	864--012	21.81
1 1/2	864--015	25.84
2	864--020	33.22
3	864--030	47.05
4	864--040	64.34
6	864--060	104.63
8	864--081	113.96
10	864--280	137.57
12	864--120	178.13

Complete code when ordering
Insert 'ISO' for NP10/16; 'A' for ANSI
150; 'E' for Table D/E

Backing Ring NP10/16

Galvanised Mild Steel

Size	Code	Price
1/2	860-005-11NP	6.47
3/4	860-007-11NP	6.85
1	860-010-11NP	8.13
1 1/4	860-012-11NP	8.64
1 1/2	860-015-11NP	9.48
2	860-020-11NP	13.39
2 1/2	860-025-11NP	18.33
3	860-030-11NP	21.20
4	860-040-11NP	27.11
5	860-050-11NP	37.15
6	860-060-11NP	43.04
8 NP 10	860-080-11N	60.52
8 NP 16	860-080-11P	60.52
10 NP 10	860-100-11N	84.44
10 NP 16	860-100-11P	84.44
12 NP 10	860-120-11N	114.24
12 NP 16	860-120-11P	114.24
14 NP 10	860-140-11N	318.60
16 NP 10	860-160-11N	391.06



Backing Ring ASA 150

Galvanised Mild Steel

Size	Code	Price
1/2	860-005-11A	6.47
3/4	860-007-11A	6.85
1	860-010-11A	8.13
1 1/4	860-012-11A	8.64
1 1/2	860-015-11A	9.48
2	860-020-11A	13.39
2 1/2	860-025-11A	18.33
3	860-030-11A	21.20
4	860-040-11A	27.11
5	860-050-11A	37.75
6	860-060-11A	43.04
8	860-080-11A	60.52
10	860-100-11A	84.04
12	860-120-11A	114.24
14	860-140-11A	318.60
16	860-160-11A	391.06

