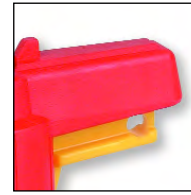
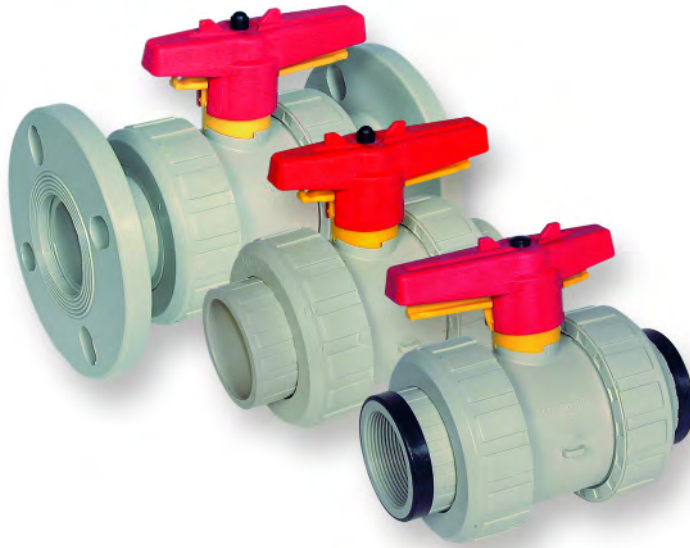


# Praher S4 Ball Valve



Lockable Handle



Tagging Point



Valve Bracket



Actuation

## Materials

Body - Polypropylene  
 Ball Seat - PTFE  
 Seals - EPDM or FPM

## Sizes

3/8" - 4"/16mm - 110mm

## Pressure Rating

3/8"/16mm to 2.1/2"/75mm - 10 bar  
 3" - 4"/90mm - 110mm - 6 bar

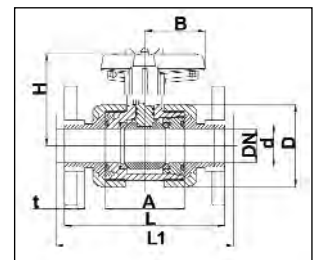
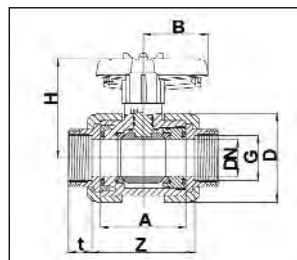
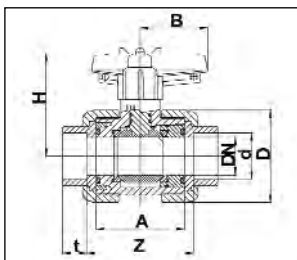
## Connections

Fusion Sockets  
 Fusion Spigots  
 BSP Female Threaded  
 Flanged PN10

## Features

- Lockable Handle (Lock not supplied)
- True Union design for easy maintenance
- Full bore design
- Tagging point included
- Matched Valve bracket for panel mounting and retrofit actuation.
- Pneumatically and Electrically actuated versions available
- Silicone free on request

## Valve Dimensions

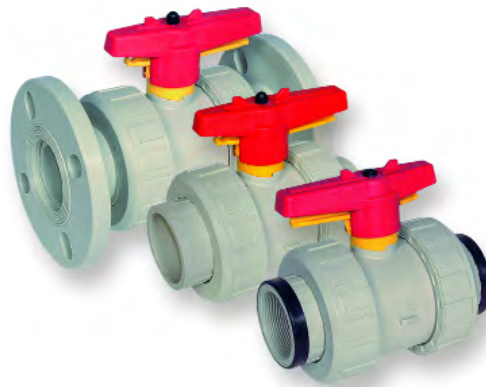


d	16	20	25	32	40	50	63	75	90	110
DN	10	15	20	25	32	40	50	65	80	80
G	3/8"	1/2"	3/4"	1"	1 1/4"	1 1/2"	2"	2 1/2"	3	4
L	114.0	124.0	144.0	154.0	174.0	194.0	224.0	284.0	300.0	340.0
L1	120.0	130.0	150.0	160.0	180.0	200.0	230.0	290.0	310.0	350.0
A	62.0	62.0	69.0	73.0	83.0	94.0	108.0	133.0	160.0	160.0
Z	71.0	67.5	79.0	84.0	96.0	114.0	134.0	162.0	208.0	207.0
t	14.5	16.0	17.0	19.5	22.0	25.0	29.0	34.5	38.5	44.0
D	52.5	52.5	62.0	69.5	80.0	100.0	120.5	155.0	187.0	187.0
H	71.5	71.5	77.0	80.5	98.5	106.5	115.5	142.0	160.0	160.0
B	40.0	40.0	51.5	51.5	64.0	73.0	85.0	110.0	132.0	132.0
PN	10	10	10	10	10	10	10	10	6	6
Weight	0.16	0.16	0.23	0.28	0.47	0.74	1.11	2.28	3.87	3.87

Dimensions in mm

## Praher Type S4 Ball Valve

**Description:** In-line double union ball valve with lockable handle  
**Mounting:** In any position  
**Maximum Fluid Pressure at 20°C:** Sizes 16mm to 75mm - 10bar;  
 Sizes 90mm to 110mm - 6 bar  
**Fluid Temperature Range:** 0°C-80°C  
**Construction:**  
**Body:** Polypropylene  
**Seals:** EPDM or FPM  
**Seats:** PTFE  
**End Connections:** Fusion sockets, fusion spigots,  
 BSP Female Threaded, Flanged BS4504 EN1092 PN10  
**Option:** Silicon-free



### MM Fusion Sockets

EPDM Seals PTFE Seats	16	12 1378	47.82
	20	12 1379	49.73
	25	12 1381	59.74
	32	12 1383	67.76
	40	12 1385	86.68
	50	12 1387	109.29
	63	12 1389	140.59
	75	12 1391	323.92
	90	12 1393	495.17
	110	12 2094	572.60

### MM Fusion Sockets

FPM Seals PTFE Seats	16	12 1377	55.70
	20	12 1412	57.78
	25	12 1380	70.01
	32	12 1382	79.81
	40	12 1384	100.82
	50	12 1386	125.24
	63	12 1388	159.34
	75	12 1390	360.40
	90	12 1392	549.52
	110	12 2115	641.84

### BSP Female Threaded

EPDM Seals PTFE Seats	3/8	12 1395	50.49
	1/2	12 1397	52.57
	3/4	12 1399	63.45
	1	12 1401	71.78
	1 1/4	12 1403	91.44
	1 1/2	12 1405	115.72
	2	12 1407	149.97
	2 1/2	12 1409	338.05
	3	12 1411	519.00

### BSP Female Threaded

FPM Seals PTFE Seats	3/8	12 1394	58.68
	1/2	12 1396	60.62
	3/4	12 1398	73.43
	1	12 1400	91.89
	1 1/4	12 1402	105.59
	1 1/2	12 1404	141.33
	2	12 1406	167.54
	2 1/2	12 1408	374.53
	3	12 1410	573.34

### MM Fusion Spigots

EPDM Seals PTFE Seats	16	12 1430	47.82
	20	12 1432	49.73
	25	12 1434	59.74
	32	12 1436	67.76
	40	12 1438	86.68
	50	12 1440	109.29
	63	12 1442	140.59
	75	12 1444	323.92
	90	12 1446	495.17
	110	12 2508	572.60

### MM Fusion Spigots

FPM Seals PTFE Seats	16	12 1431	55.70
	20	12 1433	57.78
	25	12 1435	70.01
	32	12 1437	79.81
	40	12 1439	100.82
	50	12 1441	125.24
	63	12 1443	159.34
	75	12 1445	360.40
	90	12 1447	549.52
	110	12 2509	641.84

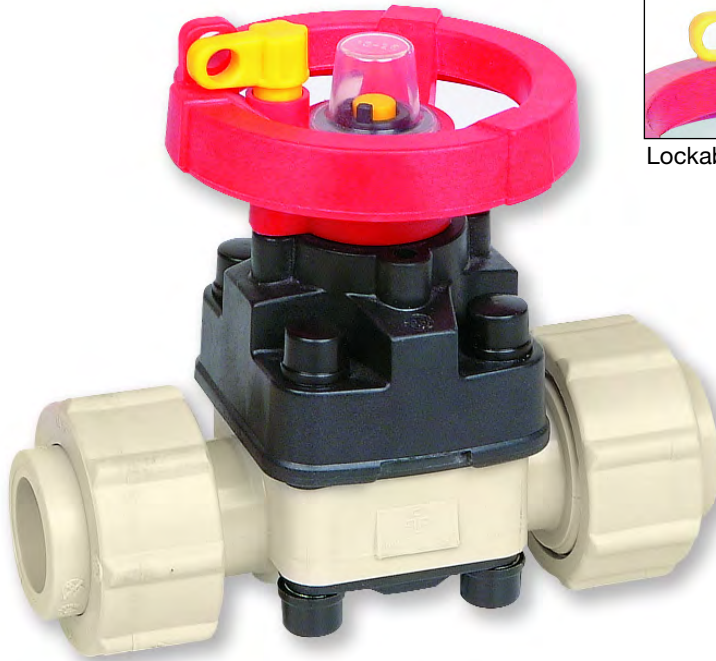
### Flanged PN10

EPDM Seals PTFE Seats	1/2	12 2294	81.91
	3/4	12 2295	93.53
	1	12 2170	121.07
	1 1/4	12 2296	146.09
	1 1/2	12 2168	188.69
	2	12 2297	226.52
	2 1/2	12 2298	423.98
	3	12 2299	609.68
	4	12 2267	706.32

### Flanged PN10

FPM Seals PTFE Seats	1/2	12 2301	89.94
	3/4	12 2302	103.80
	1	12 2303	133.14
	1 1/4	12 2304	160.23
	1 1/2	12 2305	204.61
	2	12 2306	245.29
	2 1/2	12 2307	460.45
	3	12 2308	664.02
	4	12 5510	623.98

# Praher T4 Diaphragm Valve



Lockable Handle



Visual Position Indicator



Optional Valve Support Plates

## General

Sealing material: EPDM / EPDM-PTFE / FPM

Body material: PP

Dimensions: DN 15/d 20 - DN125/d140

## Operating Pressure

DN 15 / 1/2" - DN 125 / 5" 10 bar

## Connections

PP union sockets 20mm-63mm

PP fusion spigots 20mm-110mm

Flanged PN10 20mm-140mm

## Technical Specification

For example:

TYPE PRAHER, DIN 2403

PP Diaphragm valve T4 DN 15 d20

PP mm fusion spigot

Sealing material EPDM-PTFE

Safety gear wheel

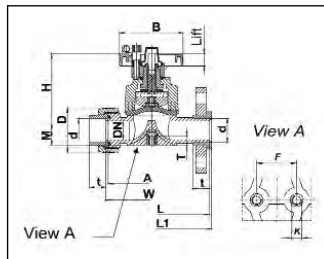
Max. Operating pressure 10 bar

## Features

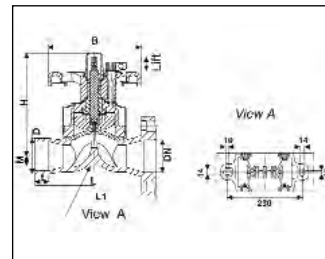
- Safety gear wheel
- Corrosion Resistant
- Maintenance free operation over a long working life
- Suitable for aggressive and dirty media
- Radial installation or removal
- Easy replacement of the diaphragms

## Valve Dimensions

DN 15 - DN 50



DN 65 - DN 80

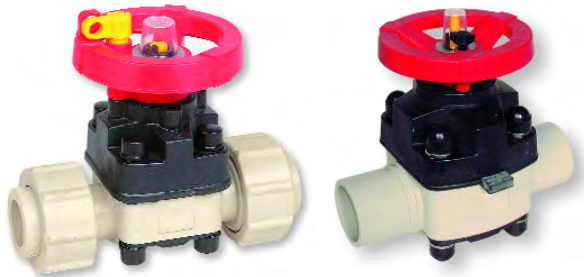


d	20	25	32	40	50	63	75	90	110	140
DN	15	20	25	32	40	50	65	80	100	125
G	1/2"	3/4"	1"	1 1/4"	1 1/2"	2"	2 1/2"	3"	4"	5"
M	16.5	16.5	20.1	31.5	31.5	38.6	25.0	25.0	25.0	25.0
H	100.0	100.0	107.0	144.0	144.0	170.0	260.0	260.0	330.0	330.0
B	86.0	86.0	86.0	136.0	136.0	136.0	234.0	234.0	234.0	234.0
F	24.5	24.5	24.5	43.5	43.5	43.5	-	-	-	-
Lift	9.0	9.0	11.0	22.0	22.0	28.0	35.0	35.0	45.0	45.0
K	M6	M6	M6	M8	M8	M8	-	-	-	-
L	124.0	144.0	154.0	174.0	194.0	224.0	284.0	300.0	340.0	-
L1	130.0	150.0	160.0	180.0	200.0	230.0	-	310.0	350.0	400.0
T	12.0	12.0	12.0	15.0	15.0	15.0	-	-	-	-
t	28.5	36.0	36.0	38.5	46.0	46.0	37.0	37.0	50.0	-
PN	10	10	10	10	10	10	10	10	10	10

Dimensions in mm

## Praher Type T4 Diaphragm Valve

**Description:** In-line diaphragm valve with position indicator  
**Mounting:** In any position  
**Maximum Fluid Pressure at 20°C:** 10 bar  
**Fluid Temperature Range:** 0°C-80°C  
**Construction:**  
**Body:** Polypropylene  
**Diaphragm:** EPDM, FPM or PTFE (EPDM backed)  
**End Connections:** Fusion spigots, flanged BS4504 EN1092  
**Option:** Silicon-free



### MM Fusion Spigots

EPDM Diaphragm			
	20	12 0150	65.08
	25	12 0154	72.82
	32	12 0155	92.94
	40	12 0156	108.40
	50	12 0157	142.37
	63	12 0158	177.96
	75	12 0159	416.98
	90	12 0160	452.72
	110	12 0902	765.45

### MM Union Sockets

EPDM Diaphragm			
	20	12 5038	80.58
	25	12 5039	84.44
	32	12 5040	103.05
	40	12 5041	123.62
	50	12 5042	160.82
	63	12 5043	195.84

### Flanged PN10

EPDM Diaphragm			
	20	12 0229	96.80
	25	12 0230	104.55
	32	12 0231	123.90
	40	12 0232	157.86
	50	12 0233	189.13
	63	12 0235	240.50
	75	12 0237	469.10
	90	12 0238	522.70
	110	12 0909	929.26
	140	12 0910	1736.40

### MM Fusion Spigots

FPM Diaphragm			
	20	12 0161	132.39
	25	12 0163	140.89
	32	12 0164	163.82
	40	12 0165	207.00
	50	12 0166	248.70
	63	12 0170	315.71
	75	12 0171	660.23
	90	12 0172	694.95

### MM Fusion Spigots

PTFE Diaphragm			
	20	12 0173	132.39
	25	12 0175	140.89
	32	12 0177	163.82
	40	12 0178	207.00
	50	12 0179	248.70
	63	12 0180	315.71
	75	12 0181	534.63
	90	12 0182	624.71
	110	12 0905	960.52

### MM Union Sockets

PTFE Diaphragm			
	20	12 5050	145.95
	25	12 5051	152.65
	32	12 5052	222.65
	40	12 5053	250.18
	50	12 5054	323.92
	63	12 5055	345.49

### Flanged PN10

PTFE Diaphragm			
	20	12 0250	156.36
	25	12 0251	164.56
	32	12 0252	186.91
	40	12 0253	246.46
	50	12 0255	277.00
	63	12 0257	373.03
	75	12 0258	558.44
	90	12 0260	769.90
	110	12 0912	1124.35
	140	12 0913	1986.57

### Flanged PN10

FPM Diaphragm			
	20	12 0239	156.36
	25	12 0240	164.56
	32	12 0241	186.91
	40	12 0242	246.46
	50	12 0243	277.00
	63	12 0246	373.03
	75	12 0248	638.73
	90	12 0249	767.56

## Spears Needle Valve

**Description:** Globe or Angle pattern flow control valve  
**Mounting:** In any position  
**Maximum Fluid Pressure at 20°C:** 10 bar  
**Fluid Temperature Range:** 0°C-80°C  
**Construction:**  
**Body:** Polypropylene  
**Seal:** PTFE  
**End Connections:** Female NPT Threaded  
**Feature:** Built-in panel or bracket mounting nut



### Globe Pattern Valve

1/4	5591- 002P	65.83
3/8	5591- 003P	65.83

### Angle Pattern Valve

1/4	5691- 002P	65.83
3/8	5691- 003P	65.83

## Praher Type S4 T & L-Port Ball Valve

**Description:** In-line horizontal T-port or L-port ball valve with lockable handle and union ends

**Mounting:** In any position

**Maximum Fluid Pressure at 20°C:** 10 bar

**Fluid Temperature Range:** 0°C-80°C

**Construction:**

**Body:** Polypropylene

**Seals:** EPDM or FPM

**Seats:** PTFE

**End Connections:** Fusion sockets or fusion spigots



### T-Port Ball Valve

#### MM Fusion Sockets

	Size	Code	Price
EPDM Seals PTFE Seats	16	124767	122.58
	20	124771	122.58
	25	125014	124.21
	32	124775	125.09
	40	125016	185.41
	50	124890	187.64
	63	124894	227.85

#### MM Fusion Sockets

	Size	Code	Price
FPM Seals PTFE Seats	16	124898	143.26
	20	124902	143.26
	25	125022	146.41
	32	124906	147.87
	40	125024	224.12
	50	124910	233.07
	63	124914	292.63

### L-Port Ball Valve

#### MM Fusion Sockets

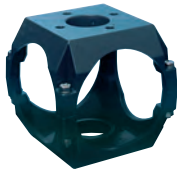
	Size	Code	Price
EPDM Seals PTFE Seats	16	124768	122.58
	20	124772	123.31
	25	125015	124.21
	32	124776	125.09
	40	125017	185.41
	50	124891	187.64
	63	124895	227.85

#### MM Fusion Sockets

	Size	Code	Price
FPM Seals PTFE Seats	16	124899	143.26
	20	124903	143.26
	25	125023	143.41
	32	124907	147.87
	40	125025	224.12
	50	124911	233.07
	63	124915	292.63

Also available with fusion spigot connections. Prices are the same as above.

## Praher Valve Bracket for Type S4 T & L-Port Valve



Size	Code	Price
16	17.0511	30.09
20	17.0511	30.09
25	17.0512	33.95
32	17.0512	33.95
40	17.0513	38.42
50	17.0513	38.42
63	17.0514	38.42

Valve bracket shown in PVC-U

## ASV Stubbe ProfiDos 101 Dosing Ball Valve

**Description:** In-line double union ball valve with flow indicator

**Mounting:** In any position

**Maximum Fluid Pressure at 20°C:** 10 bar

**Fluid Temperature Range:** 0°C-80°C

**Construction:**

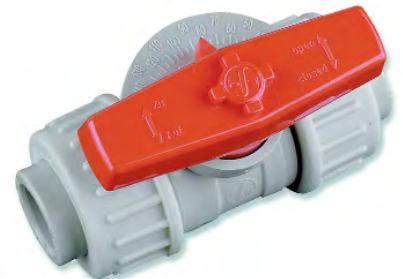
**Body:** Polypropylene

**Seals:** EPDM or FPM

**Seats:** PTFE

**End Connections:** Fusion sockets

**Features:** Accurate flow control with visible indicator



#### MM Fusion Sockets

	Size	Code	Price
EPDM Seals PTFE Seats	20	132 667	61.73
	25	132 668	64.30
	32	132 669	66.90
	40	132 670	69.58

#### MM Fusion Sockets

	Size	Code	Price
FPM Seals PTFE Seats	20	132 679	71.59
	25	132 680	77.54
	32	132 681	83.49
	40	132 682	89.41

## Praher Type S4 Ball Valve with Actuator Adaptor Kit

### EPDM Seals



Size	Code	Price
16	122 511	111.99
20	122 512	114.04
25	122 513	125.31
32	122 514	134.85
40	122 515	182.33
50	122 516	206.21
63	122 517	238.04
75	122 518	439.18
90	122 519	607.75
110	122 520	696.75



### FPM Seals

Size	Code	Price
16	126.518	129.64
20	on application	
25	on application	
32	120.416	152.51
40	on application	
50	122.700	228.65
63	120.417	264.11
75	on application	
90	120.418	675.71
110	on application	

Includes:  
Polypropylene Ball Valve, Polypropylene Valve Bracket, Console, Actuator Adaptor, Screw Set

Prices on request for BSP threaded sockets or PN10 flanged connections

## Praher Valve Bracket for Type S4 Ball Valve



Size	Code	Price
16	17.0279	29.49
20	17.0279	29.49
25	17.0280	31.58
32	17.0281	33.51
40	17.0228	37.51
50	17.0230	37.51
63	17.0232	39.76
75	17.0275	55.55
90	17.0282	62.10
110	17.0282	62.10



Valve shown with bracket

## Diaphragm Valve Mounting Plate

Ensures clearance of union nut from mounting surface  
Complete with two fixing screws.

Valve Size	Plate Thickness (mm)	Code	Price
20	16.0	14 0103	5.51
25	23.0	14 0102	5.51
32	23.0	14 0102	5.51
40	18.5	14 0123	8.96
50	23.5	14 0109	8.96
63	23.5	14 0109	8.96



Mounting plate shown fitted to valve

## Replacement T4 Diaphragm

### EPDM Diaphragm

20/1/2	05.0457	21.75
25/3/4	05.0457	21.75
32/1	05.0458	23.09
40/1/4	05.0459	26.36
50/1/2	05.0459	26.36
63/2	05.0460	27.40
75/2/2	12.0933	56.89
90/3	12.0933	56.89
110/4	12.0934	128.97
5	12.0934	128.97

### EPDM/PTFE Diaphragm

20/1/2	05.0473	44.06
25/3/4	05.0473	44.06
32/1	05.0474	49.43
40/1/4	05.0475	61.35
50/1/2	05.0475	61.35
63/2	05.0476	69.41
75/2/2	12.0918	338.05
90/3	12.0918	338.05
110/4	12.0919	387.19
5	12.0919	387.19

### FPM Diaphragm

20/1/2	05.0465	102.02
25/3/4	05.0465	102.02
32/1	05.0466	106.04
40/1/4	05.0467	117.35
50/1/2	05.0467	117.35
63/2	05.0468	248.70
75/2/2	12.0935	385.83
90/3	12.0935	385.83
110/4	12.0936	478.68
5	12.0936	478.68

# Praher K4 Butterfly Valve



Locking Handle



Universal Drilling



PP-GF Body  
PP disc



Support Lugs in  
Base

### Materials

Body - PP-GF  
Disc - Polypropylene  
Seals - EPDM or FPM

### Sizes

2 1/2"/75mm - 8"/225mm

### Pressure Rating

PN10

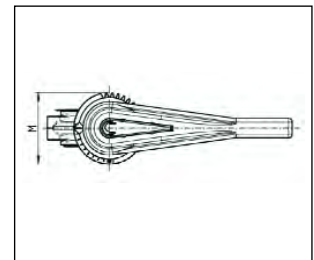
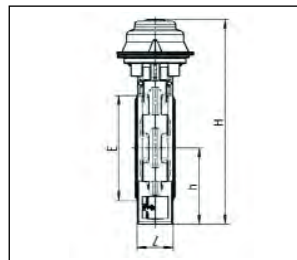
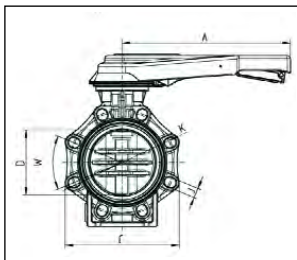
### Connections

Between flanges, universal drilled

### Features

- Only Body Seal and Disc in contact with media
- Double sealed shaft
- Valve support lugs in base
- Direct actuator mounting
- Low torque operation
- Multi-position Lockable Handle
- Manual or Gear operation
- All sizes PN10 rated
- Universal drilling - can be used with DIN, ANSI, BS and JIS flanges

### Valve Dimensions



Size	2 1/2"/75	3"/90	4"/110	6"/160	8"/225
A	230	230	300	386	386
D	65	80	100	150	200
C	133	176	206	261	314
W	90°	45°	45°	45°	45°
J	19	19	19	23	23
K	127-145	146-160	175-190.5	234.5-241.3	290-298.5
H	285	292	322	396	458
h	100	100	115	147.5	175
E	98	116	146	196	251
M	114	114	114	150	150
Z	46	49	56	70	71
PN	10 bar	10 bar	10 bar	10 bar	10 bar

Dimensions in mm

## Praher Type K4 Butterfly Valve

NEW

**Description:** Lug style butterfly valve with universal drilling for mounting between flanges. (DIN, ANSI & BS)

**Construction:**

**Body:** PP-GF

**Disc:** Polypropylene

**Seals:** EPDM or FPM

**Pressure rating:** PN10

**Size:** 2 1/2"/75mm - 8"/225mm



### Lever Operated

EPDM Seals

2 1/2"/75	12.5870	206.95
3"/90	12.5871	242.87
4"/110	12.5872	265.55
5"/140	12.8458	372.23
6"/160	12.5873	432.81
8"/225	12.5874	606.69

### Lever Operated

FPM Seals

2 1/2"/75	12.5875	287.96
3"/90	12.5876	346.82
4"/110	12.5877	332.73
5"/140	12.8459	495.66
6"/160	12.5878	559.44
8"/225	12.5879	759.78



### Gear Operated

EPDM Seals

2 1/2"/75	12.6020	417.88
3"/90	12.6021	453.79
4"/110	12.6022	466.36
5"/140	On Application	
6"/160	12.6023	638.63
8"/225	12.6024	812.51

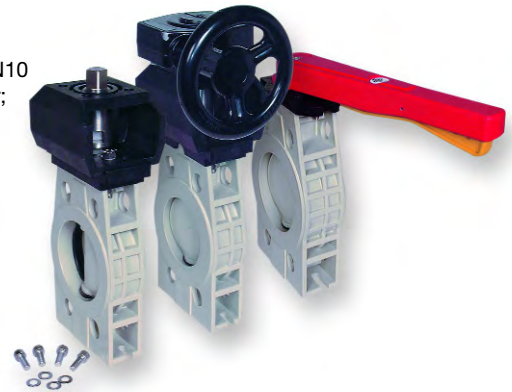
### Gear Operated

FPM Seals

2 1/2"/75	12.6025	493.48
3"/90	12.6026	557.74
4"/110	12.6027	583.54
5"/140	On Application	
6"/160	12.6028	765.26
8"/225	12.6029	965.60

### Praher Type S4 Butterfly Valve

**Description:** Wafer style butterfly valve  
**Mounting:** In any position, between flanges to BS 4504 EN1072 PN10  
**Maximum Fluid Pressure at 20°C:** Sizes 90mm to 140mm - 10 bar;  
 Sizes 160mm to 225mm - 6 bar  
**Fluid Temperature Range:** 0°C-80°C  
**Construction:**  
**Body and Disc:** Polypropylene  
**Seals:** EPDM or FPM  
**Shaft:** Stainless steel 304  
**End Connections:** Flange mounted (flanges not included)



Lever operated			
EPDM Seals	3"/90	12 1927	363.36
	4"/110	12 1928	436.32
	5"/140	12 2544	539.09
	6"/160	12 1929	627.68
	8"/225	12 1930	802.67

Gear operated			
EPDM Seals	3"/90	12 2545	890.54
	4"/110	12 2546	930.73
	5"/140	12 2547	1014.12
	6"/160	12 2548	1054.34
	8"/225	12 2549	1179.43

Lever operated			
FPM Seals	3"/90	12 1931	419.95
	4"/110	12 1932	497.40
	5"/140	12 2310	623.98
	6"/160	12 1933	701.42
	8"/225	12 1934	897.98

Gear operated			
FPM Seals	3"/90	12 2550	947.12
	4"/110	12 2551	991.80
	5"/140	12 2552	1099.03
	6"/160	12 2553	1127.31
	8"/225	12 2554	1274.73

### Asahi Type 57 Butterfly Valve

**Description:** Wafer style butterfly valve  
**Mounting:** In any position, between flanges to ANSI 150  
**Maximum Fluid Pressure at 20°C:** Sizes 1 1/2" to 10" : 10 bar  
 Sizes 12" to 14" : 6.9 bar; 16" : 5.8 bar; 18" : 5.1 bar;  
 20" to 24" : 3.4 bar  
**Fluid Temperature Range:** 0°C-60°C  
**Construction:**  
**Body:** Polypropylene  
**Disc:** Polypropylene or PVDF  
**Seals:** EPDM, FPM or Nitrile  
**Shaft:** Stainless Steel 316  
**End Connections:** Flange mounted (flanges not included)



Polypropylene Disc			
Lever Operated EPDM Seals	1 1/2	3752-015	725.98
	2	3752-020	761.04
	2 1/2	3752-025	965.54
	3	3752-030	1079.47
	4	3752-040	1155.43
	6	3752-060	1831.74
	8	3752-080	2730.08

PVDF Disc			
Lever Operated EPDM Seals	1 1/2	3740-015	825.31
	2	3740-020	860.37
	2 1/2	3740-025	1085.31
	3	3740-030	1224.09
	4	3740-040	1317.58
	6	3740-060	2217.37
	8	3740-080	3350.90

Lever Operated FPM Seals	1 1/2	3753-015	825.31
	2	3753-020	857.44
	2 1/2	3753-025	1155.43
	3	3753-030	1196.32
	4	3753-040	1273.75
	6	3753-060	2684.80
	8	3753-080	3102.57

Lever Operated FPM Seals	1 1/2	3741-015	924.63
	2	3741-020	958.24
	2 1/2	3741-025	1275.20
	3	3741-030	1340.95
	4	3741-040	1437.35
	6	3741-060	3070.44
	8	3741-080	3721.92

**Polypropylene Disc**

Plasgear Operated  
EPDM Seals

1 1/2	3726-015	1107.24
2	3726-020	1142.29
2 1/2	3726-025	1348.24
3	3726-030	1460.72
4	3726-040	1538.14
6	3726-060	2211.53
8	3726-080	3063.13
10	3726-100	3504.26
12	3726-120	4884.66
14	3726-140	on application
16	3726-160	on application

Plasgear Operated  
Nitrile Seals

1 1/2	3735-015	1107.24
2	3735-020	1142.29
2 1/2	3735-025	1348.24
3	3735-030	1460.72
4	3735-040	1538.14
6	3735-060	2211.57
8	3735-080	3063.13
10	3735-100	3504.26
12	3735-120	4884.66
14	3735-140	on application
16	3735-160	on application

Metal Gear Operated  
EPDM Seals

12	3801-120	
14	3801-140	
16	3801-160	on application
18	3801-180	
20	3801-200	
24	3801-240	

Metal Gear Operated  
Nitrile Seals

12	3802-120	
14	3802-140	
16	3802-160	on application
18	3802-180	
20	3802-200	
24	3802-240	

Plasgear Operated  
FPM Seals

1 1/2	3727-015	1206.56
2	3727-020	1238.70
2 1/2	3727-025	1538.14
3	3727-030	1577.58
4	3727-040	1656.46
6	3727-060	3066.05
8	3727-080	3412.25
10	3727-100	4706.44
12	3727-120	6574.70
14	3727-140	on application
16	3727-160	on application

Metal Gear Operated  
FPM Seals

12	3803-120	
14	3803-140	
16	3803-160	on application
18	3803-180	
20	3803-200	
24	3803-240	



**PVDF Disc**

Plasgear Operated  
EPDM Seals

1 1/2	3736-015	1206.56
2	3736-020	1243.07
2 1/2	3736-025	1468.02
3	3736-030	1606.79
4	3736-040	1700.28
6	3736-060	2598.62
8	3736-080	3683.94
10	3736-100	4598.35
12	3736-120	6392.12
14	3736-140	on application
16	3736-160	on application

Plasgear Operated  
FPM Seals

1 1/2	3737-015	1307.35
2	3737-020	1338.02
2 1/2	3737-025	1657.91
3	3737-030	1722.19
4	3737-040	1818.59
6	3737-060	3453.15
8	3737-080	4033.05
10	3737-100	5800.52
12	3737-120	8080.70
14	3737-140	on application
16	3737-160	on application

Metal Gear Operated  
EPDM Seals

12	3804-120	
14	3804-140	
16	3804-160	on application
18	3804-180	
20	3804-200	
24	3804-240	

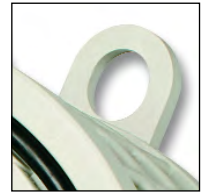
Metal Gear Operated  
FPM Seals

12	3805-120	
14	3805-140	
16	3805-160	on application
18	3805-180	
20	3805-200	
24	3805-240	

# Praher K4 Check Valve



Visual Position Indicator



Universal Drilling



85° Max Opening

## Features

- Excellent Flow Rates
- Wide opening (85%)
- Low pressure drop
- Visual open-closed indicator
- Spring return
- All sizes PN10 rated
- Universal drilling - can be used with DIN, ANSI, BS and JIS flanges

## Materials

Body - PP-GF  
 Disc - PP-GF  
 Seals - EPDM or FPM

## Sizes

2 1/2"/75mm - 10"/250mm

## Pressure Rating

PN10

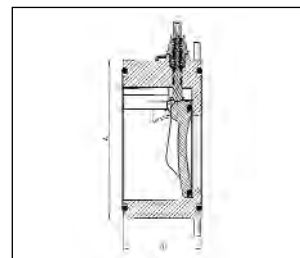
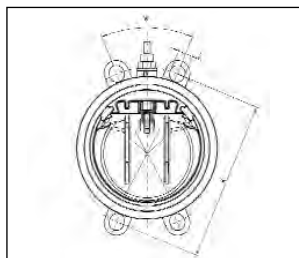
## Connections

Between flanges, universally drilled

Tightening torque for flange connections

DN	65	80	100	150	200	250	300
Nm	15	18	20	40	55	60	65

## Valve Dimensions



DN	A	B	C	K	W
65	115	63	20	139-145	90°
80	128	71	20	150-160	45°
100	155	80	20	175-191	45°
150	212	106	24	234-242	45°
200	264	140	24	290-299	45°
250	325	140	27	350-362	30°

Dimensions in mm

## Praher Type K4 Check Valve

**Description:** Lug style check valve with universal drilling for mounting between flanges. (DIN, ANSI & BS)

**Construction:**

- Body:** Polypropylene
- Seals:** EPDM or FPM
- Pressure rating:** PN10
- Size:** 2 1/2"/75mm - 10"/250mm



EPDM Seals			
	2 1/2"/75	12.5832	309.16
	3"/90	12.5833A	341.02
	4"/110	12.5834A	408.45
	6"/160	12.5835A	560.93
	8"/225	12.5836	1003.32
	10"/250	12.5837	1683.18

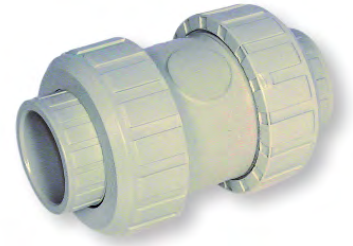
FPM Seals			
	2 1/2"/75	12.5839	349.51
	3"/90	12.5840A	396.90
	4"/110	12.5841A	471.55
	6"/160	12.5842A	637.91
	8"/225	12.5843	1091.55
	10"/250	12.5844	1784.88

Kv Value Table		
Pressure Lost	1 bar	0.001 bar
DN 80	2958 l/min	94 l/min
DN 100	5633 l/min	178 l/min
DN 150	12466 l/min	394 l/min
DN 200	21166 l/min	699 l/min

Pressure loss based on maximum opening of 85%

## Praher Type S4 Air Release Valve

**Description:** In-line air release valve  
**Mounting:** In a vertical position  
**Maximum Fluid Pressure at 20°C:** Sizes 16mm to 75mm - 10 bar;  
 Sizes 90mm to 110mm - 6 bar  
**Fluid Temperature Range:** 0°C-80°C  
**Construction:**  
**Body:** Polypropylene **Seals:** EPDM or FPM **Cone:** Polypropylene  
**End Connections:** Fusion sockets, fusion spigots or female BSP threaded



### MM Fusion Sockets

EPDM Seals	Size	Part No.	Price
	16	12 1550	35.60
	20	12 1552	37.39
	25	12 1554	42.46
	32	12 1556	49.29
	40	12 1558	55.70
	50	12 1560	75.96
	63	12 1562	112.57
	75	12 1564	279.23
	90	12 1566	367.08
	110	12 2539	446.01

### MM Fusion Sockets

FPM Seals	Size	Part No.	Price
	16	12 1551	42.46
	20	12 1553	44.23
	25	12 1555	50.94
	32	12 1557	59.28
	40	12 1559	67.47
	50	12 1561	89.51
	63	12 1563	127.77
	75	12 1565	309.75
	90	12 1567	413.26
	110	12 2542	492.18

### MM Fusion Spigots

EPDM Seals	Size	Part No.	Price
	16	12 1568	35.60
	20	12 1570	37.39
	25	12 1572	42.46
	32	12 1574	49.29
	40	12 1576	55.70
	50	12 1578	75.96
	63	12 1580	112.57
	75	12 1582	279.23
	90	12 1584	367.08
	110	12 2540	446.01

### MM Fusion Spigots

FPM Seals	Size	Part No.	Price
	16	12 1569	42.46
	20	12 1571	44.23
	25	12 1573	50.94
	32	12 1575	59.28
	40	12 1577	67.47
	50	12 1579	89.51
	63	12 1581	127.77
	75	12 1583	309.75
	90	12 1585	413.26
	110	12 2543	492.18

## Praher Type S4 Foot Valve

**Description:** In-line foot valve with screen  
**Mounting:** In a vertical position  
**Maximum Fluid Pressure at 20°C:** Sizes 16mm to 75mm - 10 bar;  
 Sizes 90mm to 110mm - 6 bar  
**Fluid Temperature Range:** 0°C-80°C  
**Construction:**  
**Body:** Polypropylene **Seals:** EPDM or FPM **Cone:** Polypropylene (weighted)  
**End Connections:** Fusion sockets, fusion spigots or female BSP threaded



### MM Fusion Sockets

EPDM Seals	Size	Part No.	Price
	16	12 1604	40.81
	20	12 1606	42.46
	25	12 1608	47.51
	32	12 1610	53.62
	40	12 1612	66.89
	50	12 1614	87.13
	63	12 1616	120.02
	75	12 1618	291.15
	90	12 1620	375.28
	110	12 2535	454.19

### MM Fusion Sockets

FPM Seals	Size	Part No.	Price
	16	12 1605	47.51
	20	12 1607	49.43
	25	12 1609	56.15
	32	12 1611	63.89
	40	12 1613	78.62
	50	12 1615	100.68
	63	12 1617	135.08
	75	12 1619	320.91
	90	12 1621	420.70
	110	12 2537	499.63

### MM Fusion Spigots

EPDM Seals	Size	Part No.	Price
	16	12 1622	40.81
	20	12 1624	42.46
	25	12 1626	47.51
	32	12 1628	53.62
	40	12 1630	66.89
	50	12 1632	87.13
	63	12 1634	120.02
	75	12 1636	291.15
	90	12 1638	375.28
	110	12 2536	454.19

### MM Fusion Spigots

FPM Seals	Size	Part No.	Price
	16	12 1623	47.51
	20	12 1625	49.43
	25	12 1627	56.15
	32	12 1629	63.89
	40	12 1631	78.62
	50	12 1633	100.68
	63	12 1635	135.08
	75	12 1637	320.91
	90	12 1639	420.70
	110	12 2538	499.63

## Praher Type S4 Check (Non Return) Valve

**Description:** In-line spring weighted cone check valve  
**Mounting:** In any position  
**Maximum Fluid Pressure at 20°C:** Sizes 16mm to 75mm - 10 bar;  
 Sizes 90mm to 110mm - 6 bar  
**Fluid Temperature Range:** 0°C-80°C  
**Construction:**  
**Body:** Polypropylene **Seals:** EPDM or FPM  
**Spring:** Stainless Steel sleeved in PTFE  
**End Connections:** Fusion sockets, fusion spigots or female BSP threaded



### MM Fusion Sockets

EPDM Seals	Size	Part No.	Price
	16	12 1502	42.46
	20	12 1503	44.23
	25	12 1504	50.94
	32	12 1505	59.28
	40	12 1506	71.94
	50	12 1507	89.81
	63	12 1508	121.98
	75	12 1509	293.36
	90	12 1510	378.99
	110	12 2531	445.27

### BSP Female Threaded

EPDM Seals	Size	Part No.	Price
	3/8	12 1532	49.73
	1/2	12 1534	51.24
	3/4	12 1536	60.02
	1	12 1538	69.55
	1 1/4	12 1540	84.16
	1 1/2	12 1542	106.04
	2	12 1544	144.46
	2 1/2	12 1546	329.86
	3	12 1548	440.06

### MM Fusion Spigots

EPDM Seals	Size	Part No.	Price
	16	12 1513	42.46
	20	12 1515	44.23
	25	12 1517	50.94
	32	12 1519	59.28
	40	12 1522	71.94
	50	12 1524	89.81
	63	12 1526	121.98
	75	12 1528	293.36
	90	12 1530	378.99
	110	12 2532	445.27

### MM Fusion Sockets

FPM Seals	Size	Part No.	Price
	16	12 1838	49.43
	20	12 1839	50.94
	25	12 1840	59.28
	32	12 1841	69.55
	40	12 1842	85.87
	50	12 1843	103.35
	63	12 1844	137.16
	75	12 1845	323.15
	90	12 1846	425.16
	110	12 2533	504.09

### BSP Female Threaded

FPM Seals	Size	Part No.	Price
	3/8	12 1533	56.44
	1/2	12 1535	58.09
	3/4	12 1537	68.66
	1	12 1539	79.81
	1 1/4	12 1541	95.90
	1 1/2	12 1543	119.59
	2	12 1545	160.10
	2 1/2	12 1547	360.40
	3	12 1549	485.48

### MM Fusion Spigots

FPM Seals	Size	Part No.	Price
	16	12 1514	49.43
	20	12 1516	50.94
	25	12 1518	59.28
	32	12 1521	69.25
	40	12 1523	83.87
	50	12 1525	103.35
	63	12 1527	137.16
	75	12 1529	323.15
	90	12 1531	425.16
	110	12 2534	504.09

## Ball Float Valve

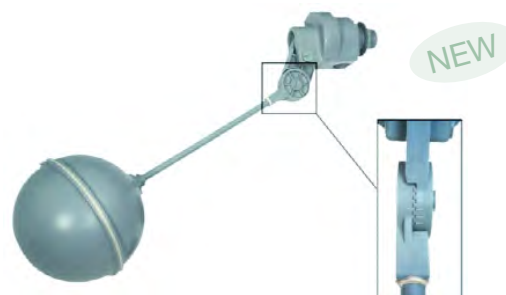
**Description:** Liquid level control valve  
**Mounting:** In a horizontal position  
**Maximum Fluid Pressure at 20°C:** 10 bar  
**Fluid Temperature Range:** 0°C-60°C  
**Construction:**  
**Body:** Polypropylene  
**Arm:** Polypropylene  
**Float:** Polypropylene  
**End Connections:** BSP male threaded



Standard Design

Standard	Size	Part No.	Price
	1/2	03500102	29.66
	1	03500104	118.66
	1 1/2	03500106	148.95

Adjustable Cam	Size	Part No.	Price
	1/2	HA/BVADJ/1PE/EP	38.20
	1	HA/BVADJ/5PE/EP	134.82
	1 1/2	HA/BVADJ/7PE/EP	162.91



Adjustable Cam Design  
5 Different Positions

### Praher Type S4 Wafer Check Valve

**Description:** Wafer style flap check valve  
**Mounting:** In any position, between flanges to BS 4504 EN1072, PN10.  
 Optional spring return for mounting in horizontal position or for pulsating flow.  
**Maximum Fluid Pressure at 20°C:** Sizes 40mm to 160mm - 10 bar; sizes 225mm to 500mm - 6 bar  
**Fluid Temperature Range:** 0°C-80°C  
**Construction:**  
**Body:** Polypropylene  
**Seals:** EPDM or FPM  
**Spring:** Stainless Steel  
**End Connections:** Flange mounted (flanges not included)



#### No Spring Return

EPDM Seals			
1 1/4"/40	07 0190	86.38	
1 1/2"/50	07 0200	90.42	
2"/63	07 0040	120.92	
2 1/2"/75	07 0050	125.24	
3"/90	07 0060	133.89	
4"/110	07 0070	155.64	
5"/140	07 0080	177.21	
6"/160	07 0090	221.90	
8"/225	07 0100	492.93	
10"/280	07 0110	711.10	
12"/315	07 0120	912.87	
14"/355	07 0620	1769.14	
16"/450	07 0621	2011.88	
20"/560	07 0622	3291.11	

#### No Spring Return

FPM Seals			
1 1/4"/40	07 0191	111.86	
1 1/2"/50	07 0201	115.72	
2"/63	07 0042	137.46	
2 1/2"/75	07 0052	139.26	
3"/90	07 0062	160.10	
4"/110	07 0072	201.05	
5"/140	07 0082	237.53	
6"/160	07 0092	299.32	
8"/225	07 0102	550.26	
10"/280	07 0112	766.93	
12"/315	07 0122	979.88	
14"/355	07 0623	2285.89	
16"/450	07 0624	2728.17	
20"/560	07 0625	4559.87	

#### Stainless Steel Spring Return

EPDM Seals			
1 1/4"/40	07 0192	160.82	
1 1/2"/50	07 0205	165.32	
2"/63	07 0041	193.60	
2 1/2"/75	07 0051	201.05	
3"/90	07 0061	214.43	
4"/110	07 0071	248.70	
5"/140	07 0081	283.69	
6"/160	07 0091	312.74	
8"/225	07 0101	612.80	
10"/280	07 0111	872.67	
12"/315	07 0121	1131.77	

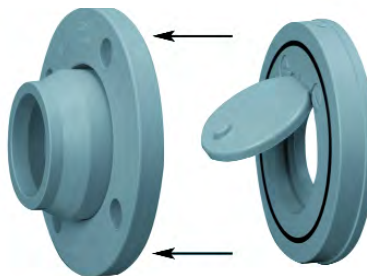
#### Stainless Steel Spring Return

FPM Seals			
1 1/4"/40	07 0193	192.86	
1 1/2"/50	07 0203	196.57	
2"/63	07 0043	208.48	
2 1/2"/75	07 0053	209.97	
3"/90	07 0063	250.94	
4"/110	07 0073	295.61	
5"/140	07 0083	347.74	
6"/160	07 0093	416.22	
8"/225	07 0103	615.77	
10"/280	07 0113	909.89	
12"/315	07 0123	1198.80	

### Installation Adaptor for Wafer Check Valve

**Flange mounting**  
 Allows the valve to open fully  
 Will accommodate use with heavy wall pipes

1 1/4"/40	07 0467	21.88
1 1/2"/50	07 0468	28.44
2"/63	07 0469	38.12
2 1/2"/75	07 0470	45.58
3"/90	07 0471	77.15
4"/110	07 0472	115.26
5"/140	07 0473	174.23
6"/160	07 0474	312.74
8"/225	07 0475	766.93
10"/280	07 0476	1012.65
12"/315	07 0477	1374.51



Note: backing ring not included.



#### Flange Mounted Wafer Check Valves

Occasionally the flange mounted wafer check valve will have restricted opening if it is mounted in a heavy wall pipe. For all installations in heavy wall pipes we recommend the use of the additional installation adaptor to ensure that the valve will open fully.

## Praher Type S4 Line Strainer

**Description:** In-line strainer with union ends

**Mounting:** In any position

**Maximum Fluid Pressure at 20°C:** Sizes 16mm to 75mm - 10 bar;  
 Sizes 90mm to 110mm - 6 bar

**Fluid Temperature Range:** 0°C-80°C

**Construction:**

**Body:** Polypropylene

**Seals:** EPDM

**Strainer:** Polypropylene with 1.8mm mesh; Stainless Steel with 0.5mm, 0.75mm or 1mm mesh

**End Connections:** Fusion sockets, fusion spigots



### MM Fusion Sockets

EPDM Seals  
 Polypropylene Screen

16	12 1711	42.29
20	12 1712	42.29
25	12 1713	50.94
32	12 1714	59.28
40	12 1715	71.94
50	12 1716	89.81
63	12 1717	121.98
75	12 1718	321.67
90	12 1719	399.10
110	12 1720	494.98

### MM Fusion Spigots

EPDM Seals  
 Polypropylene Screen

16	12 1725	42.29
20	12 1726	42.29
25	12 1727	50.94
32	12 1728	59.28
40	12 1729	71.94
50	12 1730	89.81
63	12 1731	121.98
75	12 1732	321.67
90	12 1733	399.10
110	12 1734	494.98

### MM Fusion Sockets

EPDM Seals  
 no screen included

16	12 5000	38.72
20	12 5001	38.72
25	12 5002	47.36
32	12 5003	55.70
40	12 5004	67.60
50	12 5005	85.17
63	12 5006	116.91
75	12 5007	314.97
90	12 5008	389.43
110	12 5009	482.21

### Stainless Steel Screens\*

0.5mm mesh  
 \* Note: A filter support is required for the stainless steel screen

16/3/8	50606	12.33
20/1/2	50606	12.33
25/3/4	50608	15.49
32/1	50608	15.49
40/1 1/4	50609	17.48
50/1 1/2	50610	21.31
63/2	50611	24.67
75/2 1/2	50612	37.38
90/3	50613	45.50
110/4	50613	45.50

0.75mm mesh

16/3/8	50614	12.33
20/1/2	50614	12.33
25/3/4	50616	15.49
32/1	50616	15.49
40/1 1/4	50617	17.48
50/1 1/2	50618	21.31
63/2	50619	24.67
75/2 1/2	50620	37.38
90/3	50621	45.50
110/4	50621	45.50

1mm mesh

16/3/8	50622	12.33
20/1/2	50622	12.33
25/3/4	50624	15.49
32/1	50624	15.49
40/1 1/4	50625	17.48
50/1 1/2	50626	21.31
63/2	50627	24.67
75/2 1/2	50628	37.38
90/3	50629	45.50
110/4	50629	45.50

### Filter Support for Stainless Steel Screen

16/3/8	14.1474	25.72
20/1/2	14.1474	25.72
25/3/4	14.1475	26.95
32/1	14.1476	26.95
40/1 1/4	14.1477	32.97
50/1 1/2	14.1478	36.34
63/2	14.1479	39.36
75/2 1/2	14.1480	50.70
90/3	14.1481	66.64
110/4	14.1481	66.64

## ASV Stubbe Gauge Guard

**Description:** Pressure gauge connector with isolating diaphragm

**Mounting:** In any position

**Maximum Fluid Pressure at 20°C:** 10 bar

**Fluid Temperature Range:** 0°C-80°C

**Construction:**

**Body:** Polypropylene

**Diaphragm:** PTFE (EPDM backed)

**End Connections:** Fusion Spigots, NPT Female Threaded

25x1/4x1/4"	135534	88.70
32x1/2x1/2"	135537	88.70



Note: gauge not included.