

PP-Pure Check (Non-Return) Valve

Description: In-line spring weighted cone check valve

Mounting: In any position

Maximum Fluid Pressure at 20°C: Sizes 16mm to 75mm - 10 bar;
Size 90mm - 6 bar

Fluid Temperature Range: 0°C - 80°C

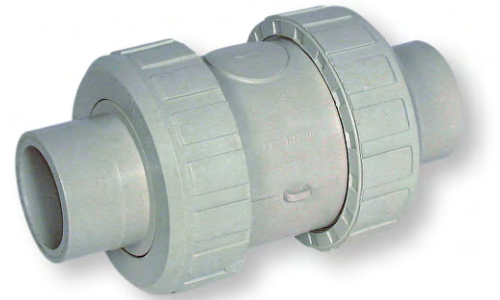
Construction:

Body: Polypropylene HP

Seals: FPM or EPDM

Spring: Stainless steel sleeved in PTFE

End Connections: Fusion spigots, fusion sockets, BSP female threaded or flanged BS4504 EN1072 PN10



Fusion Spigots

FPM Seals	Size	Code	Price
	20	72 336 1320 11	107.97
	25	72 336 1325 11	127.76
	32	72 336 1332 11	147.86
	40	72 336 1340 11	177.95
	50	72 336 1350 11	217.41
	63	72 336 1363 11	288.88
	75	72 336 1375 11	682.00

Also available as an air release or foot valve and with Fusion Socket, BSP Female Threaded or Flanged connections. Please enquire for details.

PP-Pure Wafer Check Valve

Description: Wafer style flap check valve

Mounting: In any position, between flanges to BS4504 EN1072 PN10.

Optional spring return for mounting in horizontal position or for pulsating flow.

Maximum Fluid Pressure at 20°C: 10 bar

Fluid Temperature Range: 0°C - 80°C

Construction:

Body: Polypropylene HP

Seals: FPM

Spring (optional): Stainless steel, PTFE coated

End Connections: Flange mounted (flanges not included)



No Spring Return

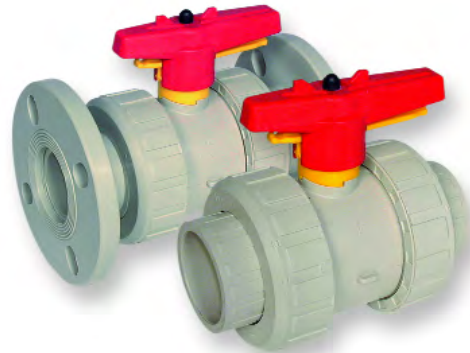
FPM Seals	Size	Code	Price
	40	72 339 1340 11	314.94
	50	72 339 1350 11	326.12
	63	72 339 1363 11	384.92
	75	72 339 1375 11	388.65
	90	72 339 1390 11	448.20
	110	72 339 1311 11	564.35
	140	72 339 1314 11	661.89
	160	72 339 1316 11	608.28
	225	72 339 1322 11	1545.63
	280	72 339 1328 11	2145.71
	315	72 339 1331 11	2739.86

Stainless Steel Spring Return

FPM Seals	Size	Code	Price
	40	72 339 1140 11	536.82
	50	72 339 1150 11	547.24
	63	72 339 1163 11	584.45
	75	72 339 1175 11	586.69
	90	72 339 1190 11	702.09
	110	72 339 1111 11	823.45
	140	72 339 1114 11	972.36
	160	72 339 1116 11	1146.57
	225	72 339 1122 11	1724.33
	280	72 339 1128 11	2544.77
	315	72 339 1131 11	3345.90

PP-Pure Ball Valve

Description: In-line double union ball valve with lockable handle
Mounting: In any position
Maximum Fluid Pressure at 20°C: Sizes 16mm to 75mm - 10 bar; Size 90mm - 6 bar
Fluid Temperature Range: 0°C - 80°C
Construction:
Body: Polypropylene HP **Seals:** FPM or EPDM **Seats:** PTFE
End Connections: Fusion sockets, fusion spigots, BSP female threaded or flanged BS4504 EN1072 PN10



Fusion Spigots

	Size	Code	Price
FPM Seals	20	72 335 1520 11	105.29
PTFE Seats	25	72 335 1525 11	125.97
	32	72 335 1532 11	141.90
	40	72 335 1540 11	178.69
	50	72 335 1550 11	222.62
	63	72 335 1563 11	282.19
	75	72 335 1575 11	641.78

Also available with Fusion Socket, BSP Female Threaded or Flanged connections. Please enquire for details.

PP-Pure Diaphragm Valve

Description: In-line diaphragm valve
Mounting: In any position
Maximum Fluid Pressure at 20°C: 10 bar
Fluid Temperature Range: 0°C - 80°C
Construction:
Body: Polypropylene HP **Diaphragm:** PTFE (EPDM Backed)
End Connections: Fusion spigots or flanged BS4504 EN1072 PN10



Flanged BS4504 PN10

	Size	Code	Price
PTFE Diaphragm	20	72 242 1520 11	314.19
	25	72 242 1525 11	341.74
	32	72 242 1532 11	403.53
	40	72 342 1740 11	507.04
	50	72 342 1750 11	629.87
	63	72 342 1763 11	787.70
	75	72 242 1575 11	1148.06
	90	72 342 1790 11	1489.06
	110	72 342 1711 11	2202.31
	140	72 342 1714 11	2991.50

Fusion Spigots

	Size	Code	Price
PTFE Diaphragm	20	72 342 1520 11	251.65
	25	72 342 1525 11	268.03
	32	72 342 1532 11	310.48
	40	72 342 1540 11	392.37
	50	72 342 1550 11	472.02
	63	72 342 1563 11	599.36
	75	72 342 1575 11	1079.57
	90	72 342 1590 11	1145.57
	110	72 342 1511 11	1761.56

Fusion Spigots - Union

	Size	Code	Price
PTFE Diaphragm	20	72 340 0020 11	273.25
	25	72 340 0025 11	294.11
	32	72 340 0032 11	323.13
	40	72 340 0040 11	417.70
	50	72 340 0050 11	500.32
	63	72 340 0063 11	610.51

PP-Pure T-Diaphragm Valve

Description: Diaphragm valve on T-branch with position indicator
Mounting: In any position (usually horizontal on the run)
Maximum Fluid Pressure at 20°C: 10 bar
Fluid Temperature Range: 0°C - 80°C
Construction:
Body: Polypropylene HP **Diaphragm:** PTFE (EPDM Backed)
End Connections: Fusion spigots

Fusion Spigots

	Size	Code	Price
PTFE Diaphragm	40/20	72 343 4021 11	490.64
	40/25	72 343 4026 11	490.64
	40/32	72 343 4033 11	490.64

