



## DuoSafe®

DuoSafe systems are manufactured from rigid PVC-U or rigid PVC-C, with containment pipe options including grey or clear PVC-U, PVC-C, ABS or Polyethylene.

They are ideal for above or below ground double containment such as applications found in chemical dosing lines, or to handle a wide range of acids, alcohols, salts and halogens. They are lightweight, rigid and easy to support. DuoSafe PVC-U is suitable for working temperatures up to 60°C. DuoSafe PVC-C may be used at higher temperatures - up to 100°C.

DuoSafe systems are designed for easy installation. Easy access is given to make the first joint on the inner (carrier) pipe, before making the final joint on the outer (containment) pipe. Assembly is faster and joints are more secure. DuoSafe systems are also assembled using a unique solvent cement - Weld-On 724 - which guarantees strong integrity with a wide range of aggressive chemicals.

A second significant benefit is the ease by which pipe cut lengths can be determined using a simple calculation based on the face-to-face measurement between the fittings to be connected. Installation becomes quick and easy.

Several options on pipe pressure ratings are available - up to a maximum 16 bar. For reasons of economy it is usually also possible to reduce the pressure rating of the containment piping without affecting the system integrity.

Systems are available in PVC-U using inch sized piping. It can be specified in the standard dark grey colour, or with a clear PVC-U containment pipe to provide continuous visible monitoring of the system. Additional containment pipe options include ABS, for improved strength on above ground systems.

DuoSafe PVC-C is manufactured in inch sizes in light grey with the option of a clear PVC-U containment pipe.

DuoSafe Inch Systems				
Containment	Carrier	PVC-U	PVC-C	PVC-U
		PVC-U	PVC-C	PVC-C
Pipe Size	Pipe Size			
2"	1/2"	•	•	•
3"	3/4"	•	•	•
3"	1"	•	•	•
4"	1 1/2"	•	•	•
4"	2"	•	•	•
6"	3"	•	•	•

Larger sizes on request

# DuoSafe® PVC-U double containment

## Pipe

6m Lengths



Class C x Class E

Size	Code	Price/Length
2 x 1/2	DCEC-B005-B020	58.14
3 x 3/4	DCEC-B007-B030	91.56
3 x 1	DCEC-B010-B030	97.47
4 x 1 1/2	DCEC-B015-B040	154.49
4 x 2	DCEC-B020-B040	171.35
6 x 3	DCEC-B030-B060	347.59
8 x 4	DCEC-B040-B080	on application

Class E x Class E

Size	Code	Price/Length
2 x 1/2	DCEE-B005-B020	72.05
3 x 3/4	DCEE-B007-B030	120.65
3 x 1	DCEE-B010-B030	126.55
4 x 1 1/2	DCEE-B015-B040	198.73
4 x 2	DCEE-B020-B040	214.87
6 x 3	DCEE-B030-B060	454.32
8 x 4	DCEE-B040-B080	on application

Sch. 40 x Sch. 80

Size	Code	Price/Length
2 x 1/2	DC84-B005-B020	88.90
3 x 3/4	DC84-B007-B030	161.52
3 x 1	DC84-B010-B030	172.05
4 x 1 1/2	DC84-B015-B040	249.29
4 x 2	DC84-B020-B040	271.05
6 x 3	DC84-B030-B060	501.37
8 x 4	DC84-B040-B080	on application

Sch. 80 x Sch. 80

Size	Code	Price/Length
2 x 1/2	DC88-B005-B020	109.97
3 x 3/4	DC88-B007-B030	203.63
3 x 1	DC88-B010-B030	214.19
4 x 1 1/2	DC88-B015-B040	315.98
4 x 2	DC88-B020-B040	337.78
6 x 3	DC88-B030-B060	653.04
8 x 4	DC88-B040-B080	on application

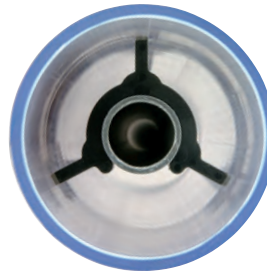
## Clear Pipe

10ft (3m) Lengths



Sch. 40

Size	Code	Price/Foot
2	0400200-PL-1000	9.33
3	0400300-PL-1000	19.29
4	0400400-PL-1000	28.87
6	0400600-PL-1000	52.80
8	0400800-PL-1000	79.04

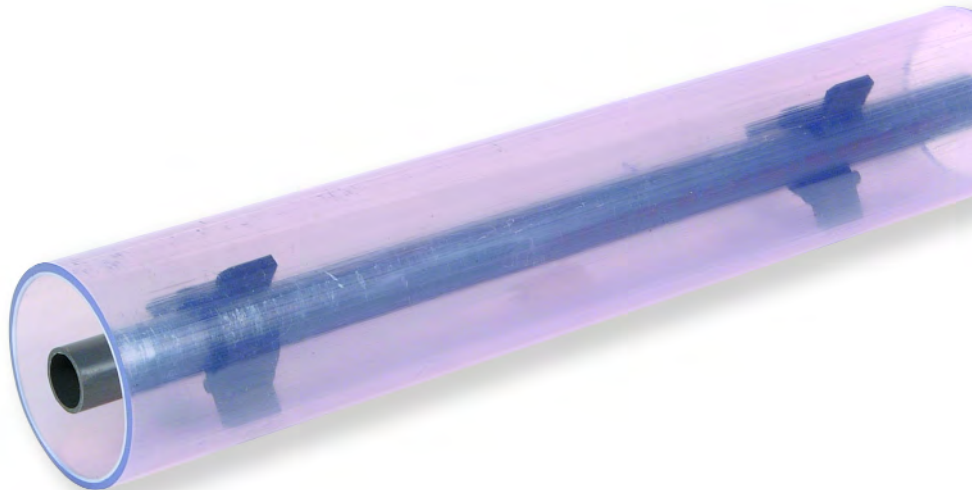


Clear PVC-U pipe is supplied as a single pipe to be used to provide transparent containment sections for visible leak detection.

## Centraliser



Size	Price
2 x 1/2	2.45
3 x 3/4	3.20
3 x 1	3.20
4 x 1 1/2	3.90
4 x 2	3.90
6 x 3	on application
8 x 4	on application



## Pipe Availability

We typically hold over  
**120 miles of pipe**  
in stock for immediate despatch



# DuoSafe® PVC-U double containment

## Tee 90°



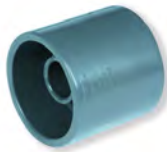
Size	Code	Price
2 x 1/2	DC01-B005-B020	50.30
3 x 3/4	DC01-B007-B030	60.63
3 x 1	DC01-B010-B030	62.06
4 x 1 1/2	DC01-B015-B040	84.02
4 x 2	DC01-B020-B040	88.08
6 x 3	DC01-B030-B060	377.37
8 x 4	DC01-B040-B080	377.37

## Elbow 90°



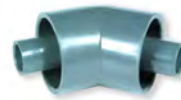
Size	Code	Price
2 x 1/2	DC06-B005-B020	26.56
3 x 3/4	DC06-B007-B030	38.10
3 x 1	DC06-B010-B030	39.53
4 x 1 1/2	DC06-B015-B040	53.59
4 x 2	DC06-B020-B040	55.58
6 x 3	DC06-B030-B060	137.32
8 x 4	DC06-B040-B080	266.26

## Socket



Size	Code	Price
2 x 1/2	DC29-B005-B020	9.75
3 x 3/4	DC29-B007-B030	23.44
3 x 1	DC29-B010-B030	23.54
4 x 1 1/2	DC29-B015-B040	31.02
4 x 2	DC29-B020-B040	31.49
6 x 3	DC29-B030-B060	72.44
8 x 4	DC29-B040-B080	96.45

## Elbow 45°



Size	Code	Price
2 x 1/2	DC17-B005-B020	35.53
3 x 3/4	DC17-B007-B030	59.53
3 x 1	DC17-B010-B030	64.49
4 x 1 1/2	DC17-B015-B040	97.36
4 x 2	DC17-B020-B040	101.26
6 x 3	DC17-B030-B060	168.88
8 x 4	DC17-B040-B080	294.95

## Zoning Fitting



Size	Code	Price
2 x 1/2	DCDB-B005-B020	49.23
3 x 3/4	DCDB-B007-B030	53.92
3 x 1	DCDB-B010-B030	55.04
4 x 1 1/2	DCDB-B015-B040	93.92
4 x 2	DCDB-B020-B040	99.12
6 x 3	DCDB-B030-B060	107.08
8 x 4	DCDB-B040-B080	115.94

## Termination Fitting

Plain Socket



Size	Code	Price
2 x 1/2	DCTM-B005-B020	67.26
3 x 3/4	DCTM-B007-B030	84.14
3 x 1	DCTM-B010-B030	84.34
4 x 1 1/2	DCTM-B015-B040	96.53
4 x 2	DCTM-B020-B040	99.98
6 x 3	DCTM-B030-B060	162.40
8 x 4	DCTM-B040-B080	202.05

## Closure Fitting



Size	Code	Price
2	DCCF-B020	221.91
3	DCCF-B030	225.72
4	DCCF-B040	232.59
6	DCCF-B060	246.34
8	DCCF-B080	326.59

## Termination Fitting

Flanged



Size	Code	Price
2 x 1/2	DCTF-B005-B020	76.21
3 x 3/4	DCTF-B007-B030	93.32
3 x 1	DCTF-B010-B030	94.14
4 x 1 1/2	DCTF-B015-B040	106.92
4 x 2	DCTF-B020-B040	117.89
6 x 3	DCTF-B030-B060	196.14
8 x 4	DCTF-B040-B080	247.05



### PVC-U and PVC-C Double Containment

This range is developed from the Spears® double containment system. It is unique because it is designed for easy installation. The carrier fittings are supplied loose so that solvent welded joints can be made in a logical, ordered way, eliminating the need to make simultaneous joints on the carrier and containment pipes.

## Ball Valve

Manual Operation



Size	Code	Price
2 x 1/2	DCBV-B005-B020	322.95
3 x 3/4	DCBV-B007-B030	346.84
3 x 1	DCBV-B010-B030	358.92
4 x 1 1/2	DCBV-B015-B040	602.60
4 x 2	DCBV-B020-B040	621.88
6 x 3	DCBV-B030-B060	on application
8 x 4	DCBV-B040-B080	on application

## Leak Detection Tee

With Drain Valve



Size	Code	Price
2 x 1	DCLD-B020	68.98
3 x 1	DCLD-B030	84.60
4 x 1	DCLD-B040	114.23
6 x 1	DCLD-B060	236.16
8 x 1	DCLD-B080	405.39

## Valve Box

Includes valve



Size	Code	Price
2 x 1/2	DCVB-B005-B020	387.61
3 x 3/4	DCVB-B007-B030	464.79
3 x 1	DCVB-B010-B030	470.04
4 x 1 1/2	DCVB-B015-B040	566.45
4 x 2	DCVB-B020-B040	583.89
6 x 3	DCVB-B030-B060	on application
8 x 4	DCVB-B040-B080	on application

## Leak Detection Saddle

With Drain Valve



Size	Code	Price
2 x 1	DCLS-B020	79.26
3 x 1	DCLS-B030	88.75
4 x 1	DCLS-B040	96.73
6 x 1	DCLS-B060	116.49
8 x 1	DCLS-B080	206.99

## Solvent Cement\*

Size	Code	Price
500ml tin	724-301	20.52
Quart (946ml) tin	724-201	36.92

\*The use of Weld-On 724 Cement with this system is a requirement of the warranty.



## Primer

Size	Code	Price
Pint (473ml) tin	770-300	15.93
Quart (946ml) tin	770-200	25.89



All WELD-ON cements, primers and cleaning fluids are now LOW VOC

## Cleaning Fluid

Size	Code	Price
500ml tin	765-300	8.73



# DuoSafe® PVC-C double containment

## Pipe

6m Lengths



Sch. 40 x Sch. 80

Size	Code	Price/Length
2 x 1/2	DC84-C005-C020	163.62
3 x 3/4	DC84-C007-C030	306.17
3 x 1	DC84-C010-C030	327.22
4 x 1 1/2	DC84-C015-C040	455.74
4 x 2	DC84-C020-C040	497.86
6 x 3	DC84-C030-C060	988.70
8 x 4	DC84-C040-C080	on application

Sch. 80 x Sch. 80

Size	Code	Price/Length
2 x 1/2	DC88-C005-C020	197.33
3 x 3/4	DC88-C007-C030	371.47
3 x 1	DC88-C010-C030	381.73
4 x 1 1/2	DC88-C015-C040	576.51
4 x 2	DC88-C020-C040	618.65
6 x 3	DC88-C030-C060	1233.06
8 x 4	DC88-C040-C080	on application

## PVC-U Clear Pipe

10ft (3m) Lengths



Sch. 40

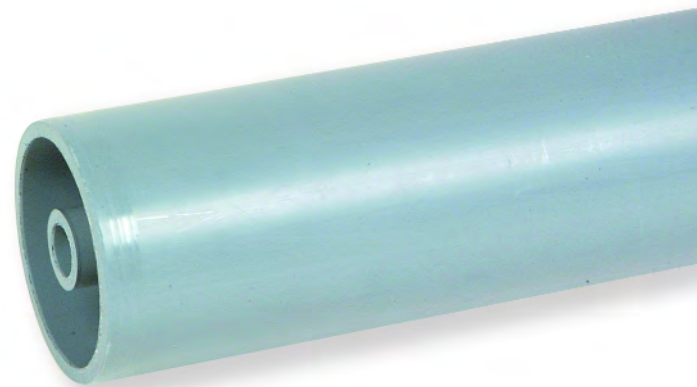
Size	Code	Price/Foot
2	0400200-PL-1000	9.33
3	0400300-PL-1000	19.29
4	0400400-PL-1000	28.87
6	0400600-PL-1000	52.80
8	0400800-PL-1000	79.04

Clear PVC-U pipe is supplied as a single pipe to be used to provide transparent containment sections for visible leak detection.

## Centraliser



Size	Price
2 x 1/2	2.45
3 x 3/4	3.20
3 x 1	3.20
4 x 1 1/2	3.90
4 x 2	3.90
6 x 3	on application
8 x 4	on application



## Tee 90°



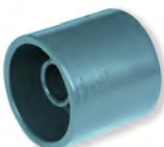
Size	Code	Price
2 x 1/2	DC01-C005-C020	55.71
3 x 3/4	DC01-C007-C030	94.15
3 x 1	DC01-C010-C030	100.07
4 x 1 1/2	DC01-C015-C040	145.90
4 x 2	DC01-C020-C040	152.10
6 x 3	DC01-C030-C060	334.61
8 x 4	DC01-C040-C080	786.46

## Elbow 90°



Size	Code	Price
2 x 1/2	DC06-C005-C020	39.53
3 x 3/4	DC06-C007-C030	69.79
3 x 1	DC06-C010-C030	74.86
4 x 1 1/2	DC06-C015-C040	132.05
4 x 2	DC06-C020-C040	140.93
6 x 3	DC06-C030-C060	245.76
8 x 4	DC06-C040-C080	567.28

## Socket



Size	Code	Price
2 x 1/2	DC29-C005-C020	15.44
3 x 3/4	DC29-C007-C030	34.30
3 x 1	DC29-C010-C030	35.76
4 x 1 1/2	DC29-C015-C040	50.14
4 x 2	DC29-C020-C040	51.88
6 x 3	DC29-C030-C060	122.94
8 x 4	DC29-C040-C080	290.42

## Elbow 45°



Size	Code	Price
2 x 1/2	DC17-C005-C020	41.44
3 x 3/4	DC17-C007-C030	74.88
3 x 1	DC17-C010-C030	80.80
4 x 1 1/2	DC17-C015-C040	116.77
4 x 2	DC17-C020-C040	128.45
6 x 3	DC17-C030-C060	291.78
8 x 4	DC17-C040-C080	583.48

## Zoning Fitting



Size	Code	Price
2 x 1/2	DCDB-C005-C020	49.79
3 x 3/4	DCDB-C007-C030	55.04
3 x 1	DCDB-C010-B030	115.72
4 x 1 1/2	DCDB-C015-C040	125.68
4 x 2	DCDB-C020-C040	140.70
6 x 3	DCDB-C030-C060	182.47
8 x 4	DCDB-C040-C080	186.09

## Termination Fitting

Plain Socket



Size	Code	Price
2 x 1/2	DCTM-C005-C020	101.75
3 x 3/4	DCTM-C007-C030	103.98
3 x 1	DCTM-C010-C030	106.91
4 x 1 1/2	DCTM-C015-C040	135.33
4 x 2	DCTM-C020-C040	141.30
6 x 3	DCTM-C030-C060	255.94
8 x 4	DCTM-C040-C080	457.52

## Closure Fitting



Size	Code	Price
2	DCCF-C020	223.07
3	DCCF-C030	234.68
4	DCCF-C040	244.93
6	DCCF-C060	298.56
8	DCCF-C080	401.63

## Termination Fitting

Flanged



Size	Code	Price
2 x 1/2	DCTF-C005-C020	112.91
3 x 3/4	DCTF-C007-C030	115.79
3 x 1	DCTF-C010-C030	120.26
4 x 1 1/2	DCTF-C015-C040	153.85
4 x 2	DCTF-C020-C040	164.77
6 x 3	DCTF-C030-C060	305.38
8 x 4	DCTF-C040-C080	426.81

## Ball Valve

Manual Operation



Size	Code	Price
2 x 1/2	DCBV-C005-C020	484.46
3 x 3/4	DCBV-C007-C030	500.19
3 x 1	DCBV-C010-C030	524.37
4 x 1 1/2	DCBV-C015-C040	942.70
4 x 2	DCBV-C020-C040	995.54
6 x 3	DCBV-C030-C060	on application
8 x 4	DCBV-C040-C080	on application

## Leak Detection Tee

With Drain Valve



Size	Code	Price
2 x 1	DCLD-C020	90.16
3 x 1	DCLD-C030	143.84
4 x 1	DCLD-C040	184.03
6 x 1	DCLD-C060	443.74
8 x 1	DCLD-C080	603.89

## Valve Box

Includes valve



Size	Code	Price
2 x 1/2	DCVB-C005-C020	on application
3 x 3/4	DCVB-C007-C030	on application
3 x 1	DCVB-C010-C030	on application
4 x 1 1/2	DCVB-C015-C040	on application
4 x 2	DCVB-C020-C040	on application
6 x 3	DCVB-C030-C060	on application
8 x 4	DCVB-C040-C080	on application

## Leak Detection Saddle

With Drain Valve



Size	Code	Price
2 x 1	DCLS-C020	91.48
3 x 1	DCLS-C030	104.61
4 x 1	DCLS-C040	115.54
6 x 1	DCLS-C060	159.31
8 x 1	DCLS-C080	295.68

## Solvent Cement\*

Size	Code	Price
500ml tin	724-301	20.52
Quart (946ml) tin	724-201	36.92

\*The use of Weld-On 724 Cement with this system is a requirement of the warranty.

## Primer

Size	Code	Price
Pint (473ml) tin	770-300	15.93
Quart (946ml) tin	770-200	25.89

## Cleaning Fluid

Size	Code	Price
500ml tin	765-300	8.73

 DuoSafe® FLEX

DuoSafe FLEX is engineered for applications where long, continuous lengths of small diameter pipe is required. It is ideal for dosing applications such as in water treatment where there may be multiple dosing points drawing from a single chemical storage unit.

DuoSafe FLEX is developed in conjunction with Copely Developments - one of the pioneers in the development of flexible pipe systems, and the inventors of the first open mesh PVC hose in 1950.

The system uses high quality flexibles that are manufactured as double contained products in a single extrusion process. They are supplied either in standard coil lengths of up to 300 metres, or may be cut to specific shorter lengths or specially manufactured in longer coils should the job require it. Connections between lengths or at termination points are made using a special range of rigid PVC-U fittings.

There are two types of flexible carrier hose available - Aquachem and Hydrachem - each offering strong resistance to a wide range of dosing chemicals. The carrier (dosing) tube is manufactured in sizes from DN 6mm up to DN 38mm, with a maximum working pressure of 10 bar.



DuoSafe FLEX Systems			
Containment Hose ID	Carrier Hose ID	Aquachem	Hydrachem
19mm	6.3mm	•	•
25mm	10.0mm	•	•
25mm	12.5mm	•	•
32mm	19.0mm	•	•
38mm	25.0mm	•	•
50mm	31.5mm	•	•
60mm	38.0mm	•	•

## DuoSafe FLEX Aquachem Double Containment Hose

Code	Carrier Hose Size		Containment Hose Size		Price per Metre
	I.D. (mm)	O.D. (mm)	I.D. (mm)	O.D. (mm)	
PRH 06 / C25	6.3	12.0	19.0	25.0	18.15
PRH 10 / C25	10.0	16.0	25.0	31.0	21.75
PRH 12 / C25	12.5	19.0	25.0	31.0	25.03
PRH 19 / C325	19.0	26.0	32.0	42.0	28.23
PRH 25 / C385	25.0	33.0	38.0	48.0	31.62
PRH 32 / C506	31.5	41.0	50.0	62.0	42.78
PRH 38 / C606	38.0	48.5	60.0	72.0	51.64
PRH 50 / C75	50.0	62.0	75.0	86.0	65.35

Colour: White Carrier Hose with Clear Blue Tint Containment Hose

## DuoSafe FLEX Hydrachem Double Containment Hose

Code	Carrier Hose Size		Containment Hose Size		Price per Metre
	I.D. (mm)	O.D. (mm)	I.D. (mm)	O.D. (mm)	
EVC 06 / C25	6.3	12.0	19.0	25.0	18.15
EVC 10 / C25	10.0	16.0	25.0	31.0	21.75
EVC 12 / C25	12.5	19.0	25.0	31.0	25.03
EVC 19 / C325	19.0	26.0	32.0	42.0	28.23
EVC 25 / C385	25.0	33.0	38.0	48.0	31.62
EVC 32 / C506	31.5	41.0	50.0	62.0	42.78
EVC 38 / C606	38.0	48.5	60.0	72.0	51.64

Colour: White Carrier Hose with Clear Blue Tint Containment Hose



## DuoSafe Flex Fittings

### Dosing Connector

Terminates inner hose



Hose Size	Thread Size	Code	Price
6.3	1/2 Male	PHR 06 DOS	26.95
10.0	1/2 Male	PHR 10 DOS	28.49
12.5	1/2 Male	PHR 12 DOS	28.79
19.0	3/4 Female	PHR 19 DOS	31.13
25.0	1 Female	PHR 25 DOS	32.04
31.5	1 1/4 Female	PHR 31 DOS	53.52
38.0	1 1/2 Female	PHR 38 DOS	75.36
50.0	2 Female	PHR 50 DOS	103.51

Colour: Grey PVC-U

Complete with stainless steel compression bands

### Double Connector

Terminates inner and outer hose. Provides threaded connection to inner hose



Inner Hose	Outer Hose	Thread Size	Code	Price
6.3	19.0	1/2 Male	PHR 06 DUAL	35.78
10.0	25.0	1/2 Male	PHR 10 DUAL	37.40
12.5	25.0	1/2 Male	PHR 12 DUAL	39.49
19.0	32.0	3/4 Female	PHR 19 DUAL	42.28
25.0	38.0	1 Female	PHR 25 DUAL	44.13
31.5	50.0	1 1/4 Female	PHR 31 DUAL	73.45
38.0	60.0	1 1/2 Female	PHR 38 DUAL	102.71
50.0	75.0	2 Female	PHR 50 DUAL	132.61

Colour: Grey PVC-U

Complete with stainless steel compression bands

### Outer Termination

Terminates outer hose only. Male solvent weld spigot connection



Hose Size	Spigot Size	Code	Price
19.0	20mm	PHR 06 OT	28.25
25.0	25mm	PHR 10/12 OT	28.49
32.0	32mm	PHR 19 OT	31.13
38.0	40mm	PHR 25 OT	32.04
50.0	50mm	PHR 31 OT	53.52
60.0	63mm	PHR 38 OT	75.36
75.0	75mm	PHR 50 OT	103.51

Colour: Grey PVC-U

Complete with stainless steel compression bands

### Compression Tool

Heavy duty model



Code	Price
14 1000 30	84.55