



 **Agrusafe**

AgruSafe double containment is fabricated from separate pipes, and is available in Polypropylene, PVDF, Polyethylene and ECTFE (Halar). It is manufactured by AGRU - using the latest production and fabrication techniques to ensure maximum system integrity.

The systems may be assembled using the same carrier and containment materials, or they may also be ordered with dissimilar materials for reasons of economy or perhaps to suit a particular application.

AgruSafe is available with carrier pipe sizes as small as DN 25mm, however it is especially suitable for larger diameter systems. The standard range features carrier pipe diameters in sizes up to DN 250mm, but it is commonly manufactured in larger sizes up to DN 600mm. It is ideal for industrial and process waste lines as well as for pressurised transfer piping. Typical applications are found in pharmaceutical and semi-conductor plants, steel mills, plating shops, or in the chemical and nuclear industries.

There are two separate welding techniques used for AgruSafe systems: simultaneous welding and cascade welding.

Simultaneous welding uses the standard butt-fusion welding technique and is used where carrier pipes and containment pipes of the same material are used. The twin walls of the pipes and the fittings are welded together during the assembly process so that they can be clamped as one piece in the butt-fusion welding machine. Welding of the carrier and containment pipe takes place simultaneously.

The cascade welding technique is required when the carrier and containment pipes are from different materials. Cascade welding requires a specially adapted butt-fusion welding machine with a split welding plate so that the carrier pipe can be welded first. Once this is done, the outer shell of the welding plate is moved into position so that the containment pipe can be welded. Welding machines for both systems are available for sale or for hire.

AgruSafe systems are available in a variety of pressure ratings - up to PN16 - to suit the application. Using the wide range of pressure rated pipe and fittings - for example PN 3.2, PN 6 or PN 10 - it is possible to optimise the cost effectiveness of the system.



AgruSafe Simultaneous Welded Systems					
Containment		PP	PE	PVDF	ECTFE
Pipe Size	Carrier Pipe Size	PP	PE	PVDF	ECTFE
90mm	32mm	•	•	•	•
110mm	63mm	•	•		
125mm	63mm			•	
160mm	63mm				•
160mm	90mm	•	•	•	•
200mm	110mm	•	•	•	
280mm	160mm	•	•	•	
315mm	200mm	•	•		
355mm	250mm	•	•		

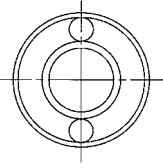
  

AgruSafe Cascade Welded Systems					
Containment		PE	PE	PP	
Pipe Size	Carrier Pipe Size	PP	PVDF	PVDF	
90mm	32mm	•	•	•	
110mm	63mm				
125mm	63mm	•	•	•	
160mm	90mm	•	•	•	
200mm	110mm	•	•	•	
280mm	160mm	•	•	•	

Larger sizes on request

## Pipe - PP x PP

5m Lengths

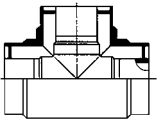


PN3.2 x PN6		
Size Containment/Carrier	Code	Price/M
90/32	-	
110/63	-	
160/90	80 785 1690 37	69.05
200/110	80 785 2011 37	102.77
280/160	-	
315/200	-	
355/250	-	

PN3.2 x PN10	
Code	Price/M
-	
80 785 1163 31	49.95
80 785 1690 31	73.83
80 785 2011 31	109.73
80 785 2816 31	197.61
80 785 3120 31	241.03
80 785 3525 31	322.81

PN6 x PN10	
Code	Price/M
80 785 9032 71	44.45
-	
-	
-	
-	
-	
-	

## Tee 90° - PP x PP

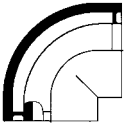


PN3.2 x PN6		
Size Containment/Carrier	Code	Price
90/32	-	
110/63	-	
160/90	80 106 1690 37	262.75
200/110	80 106 2011 37	335.84
280/160	-	
315/200	-	
355/250	-	

PN3.2 x PN10	
Code	Price
-	
80 106 1163 31	173.71
80 106 1690 31	270.70
80 106 2011 31	343.06
80 106 2816 31	812.08
80 106 3120 31	1159.49
80 106 3525 31	1952.74

PN6 x PN10	
Code	Price
80 106 9032 71	143.74
-	
-	
-	
-	
-	
-	

## Bend 90° - PP x PP

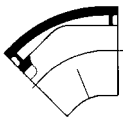


PN3.2 x PN6		
Size Containment/Carrier	Code	Price
90/32	-	
110/63	-	
160/90	80 101 1690 37	178.05
200/110	80 101 2011 37	235.24
280/160	-	
315/200	-	
355/250	-	

PN3.2 x PN10	
Code	Price
-	
80 101 1163 31	125.36
80 101 1690 31	180.23
80 101 2011 31	235.97
80 101 2816 31	526.92
80 101 3120 31	618.83
80 101 3525 31	1243.46

PN6 x PN10	
Code	Price
80 101 9032 71	99.30
-	
-	
-	
-	
-	
-	

## Bend 45° - PP x PP

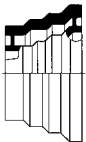


PN3.2 x PN6		
Size Containment/Carrier	Code	Price
90/32	-	
110/63	-	
160/90	80 102 1690 37	214.81
200/110	80 102 2011 37	278.66
280/160	-	
315/200	-	
355/250	-	

PN3.2 x PN10	
Code	Price
-	
80 102 1163 31	150.54
80 102 1690 31	215.68
80 102 2011 31	283.71
80 102 2816 31	618.12
80 102 3120 31	693.39
80 102 3525 31	1491.00

PN6 x PN10	
Code	Price
80 102 9032 71	119.01
-	
-	
-	
-	
-	
-	

## Concentric Reducer - PP x PP



PN3.2 x PN6		
Size Containment/Carrier	Code	Price
110/63x90/32	-	
160/90x90/32	-	
160/90x110/63	80 107 9063 37	186.74
200/110x110/63	-	
200/110x160/90	80 107 1190 37	325.69
280/160x160/90	-	
280/160x200/110	-	
315/200x200/110	-	
315/200x280/160	-	
355/250x280/160	-	
355/250x315/200	-	

PN3.2 x PN10	
Code	Price
-	
80 107 9032 31	241.03
80 107 9063 31	187.47
80 107 1163 31	400.96
80 107 1190 31	327.15
80 107 1690 31	626.78
80 107 1611 31	626.78
80 107 2011 31	810.63
80 107 2016 31	810.63
80 107 2516 31	1729.83
80 107 2520 31	1524.29

PN6 x PN10	
Code	Price
80 107 6332 71	111.17
-	
-	
-	
-	
-	
-	
-	
-	

## Cap - PP x PP



PN3.2 x PN6		
Size Containment/Carrier	Code	Price
90/32	-	
110/63	-	
160/90	80 154 1690 37	159.24
200/110	80 154 2011 37	196.14
280/160	-	
315/200	-	
355/250	-	

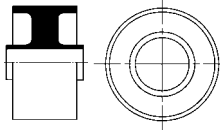
PN3.2 x PN10	
Code	Price
-	
80 154 1163 31	115.08
80 154 1690 31	159.24
80 154 2011 31	196.14
80 154 2816 31	263.44
80 154 3120 31	327.88
80 154 3525 31	373.47

PN6 x PN10	
Code	Price
80 154 9032 71	105.08
-	
-	
-	
-	
-	
-	

## Fixed Point Fitting - PP x PP

(Dog Bone Type 1)

Isolates Containment



### PN3.2 x PN6

Size Containment/Carrier	Code	Price
90/32	-	-
110/63	-	-
160/90	80 137 1690 37	167.20
200/110	80 137 2011 37	205.57
280/160	-	-
315/200	-	-
355/250	-	-

### PN3.2 x PN10

Code	Price
-	-
80 137 1163 31	121.59
80 137 1690 31	167.20
80 137 2011 31	205.57
80 137 2816 31	276.50
80 137 3120 31	344.53
80 137 3525 31	392.29

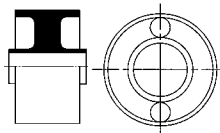
### PN6 x PN10

Code	Price
80 137 9032 71	110.87
-	-
-	-
-	-
-	-
-	-

## Fixed Point Fitting - PP x PP

(Dog Bone Type 1)

Continues Containment



### PN3.2 x PN6

Size Containment/Carrier	Code	Price
90/32	-	-
110/63	-	-
160/90	80 147 1690 37	191.81
200/110	80 147 2011 37	236.66
280/160	-	-
315/200	-	-
355/250	-	-

### PN3.2 x PN10

Code	Price
-	-
80 147 1163 31	151.99
80 147 1690 31	191.81
80 147 2011 31	236.66
80 147 2816 31	318.45
80 147 3120 31	396.63
80 147 3525 31	450.92

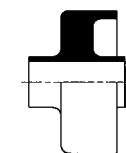
### PN6 x PN10

Code	Price
80 147 9032 71	138.68
-	-
-	-
-	-
-	-
-	-

## Fixed Point Fitting - PP x PP

(Dog Bone Type 1-A)

Terminates Containment



### PN3.2 x PN6

Size Containment/Carrier	Code	Price
90/32	-	-
110/63	-	-
160/90	80 136 1690 37	167.20
200/110	80 136 2011 37	205.57
280/160	-	-
315/200	-	-
355/250	-	-

### PN3.2 x PN10

Code	Price
-	-
80 136 1163 31	121.59
80 136 1690 31	167.20
80 136 2011 31	205.57
80 136 2816 31	276.50
80 136 3120 31	344.53
80 136 3525 31	392.29

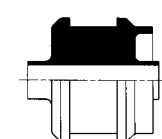
### PN6 x PN10

Code	Price
80 136 9032 71	110.87
-	-
-	-
-	-
-	-
-	-

## Fixed Point Fitting - PP x PP

(Dog Bone Type 2-A)

Terminates Containment



### PN3.2 x PN6

Size Containment/Carrier	Code	Price
90/32	-	-
110/63	-	-
160/90	80 138 1690 37	235.97
200/110	80 138 2011 37	353.93
280/160	-	-
315/200	-	-
355/250	-	-

### PN3.2 x PN10

Code	Price
-	-
80 138 1163 31	154.88
80 138 1690 31	235.97
80 138 2011 31	353.93
80 138 2816 31	481.33
80 138 3120 31	490.72
80 138 3525 31	568.19

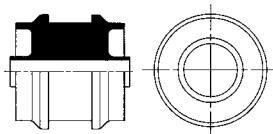
### PN6 x PN10

Code	Price
80 138 9032 71	134.04
-	-
-	-
-	-
-	-
-	-

## Fixed Point Fitting - PP x PP

(Dog Bone Type 2)

Isolates Containment



### PN3.2 x PN6

Size Containment/Carrier	Code	Price
90/32	-	-
110/63	-	-
160/90	80 139 1690 37	235.97
200/110	80 139 2011 37	353.93
280/160	-	-
315/200	-	-
355/250	-	-

### PN3.2 x PN10

Code	Price
-	-
80 139 1163 31	154.88
80 139 1690 31	235.97
80 139 2011 31	353.93
80 139 2816 31	481.33
80 139 3120 31	490.72
80 139 3525 31	568.19

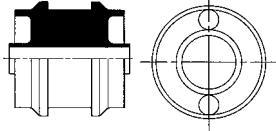
### PN6 x PN10

Code	Price
80 139 9032 71	134.04
-	-
-	-
-	-
-	-
-	-

## Fixed Point Fitting - PP x PP

(Dog Bone Type 2)

Continues Containment



### PN3.2 x PN6

Size Containment/Carrier	Code	Price
90/32	-	
110/63	-	
160/90	80 149 1690 37	270.70
200/110	80 149 2011 37	407.50
280/160	-	
315/200	-	
355/250	-	

### PN3.2 x PN10

Code	Price
-	
80 149 1163 31	193.98
80 149 1690 31	270.70
80 149 2011 31	407.50
80 149 2816 31	553.70
80 149 3120 31	563.84
80 149 3525 31	652.84

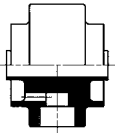
### PN6 x PN10

Code	Price
80 149 9032 71	167.90
-	
-	
-	
-	
-	
-	

## Fixed Point Fitting - PP x PP

(Leak Detection Connection)

Isolates Containment



### PN3.2 x PN6

Size Containment/Carrier	Code	Price
90/32	-	
110/63	-	
160/90	80 140 1690 37	283.02
200/110	80 140 2011 37	323.54
280/160	-	
315/200	-	
355/250	-	

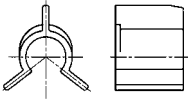
### PN3.2 x PN10

Code	Price
-	
80 140 1163 31	240.30
80 140 1690 31	283.02
80 140 2011 31	323.54
80 140 2816 31	399.53
80 140 3120 31	453.82
80 140 3525 31	516.07

### PN6 x PN10

Code	Price
80 140 9032 71	223.65
-	
-	
-	
-	
-	
-	

## Spider Clip - PP



### PN3.2 x PN6

Size Containment/Carrier	Code	Price
90/32	-	
110/63	80 099 1163 33	7.01
160/90	80 099 1690 33	9.27
200/110	80 099 2011 33	10.20
280/160	80 099 2816 33	16.65
315/200	80 099 3120 33	18.82
355/250	80 099 3525 33	19.69

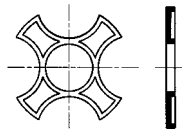
### PN3.2 x PN10

Code	Price
-	
80 099 1163 33	7.01
80 099 1690 33	9.27
80 099 2011 33	10.20
80 099 2816 33	16.65
80 099 3120 33	18.82
80 099 3525 33	19.69

### PN6 x PN10

Code	Price
-	
-	
-	
-	
-	
-	
-	

## Support Disc - PP



### PN3.2 x PN6

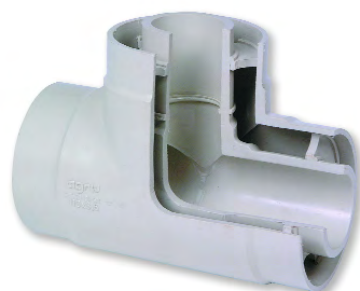
Size Containment/Carrier	Code	Price
90/32	-	
110/63	80 098 1163 33	7.01
160/90	80 098 1690 33	9.27
200/110	80 098 2011 33	10.20
280/160	80 098 2816 33	16.65
315/200	80 098 3120 33	18.82
355/250	80 098 3525 33	19.69

### PN3.2 x PN10

Code	Price
-	
80 098 1163 33	7.01
80 098 1690 33	9.27
80 098 2011 33	10.20
80 098 2816 33	16.65
80 098 3120 33	18.82
80 098 3525 33	19.69

### PN6 x PN10

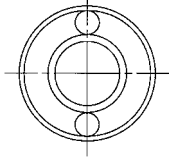
Code	Price
80 098 9032 17	5.74
-	
-	
-	
-	
-	
-	



# polyethylene x polyethylene

## Pipe - PE x PE

5m Lengths



### SDR33/17.6 PN5 x PN10

Size Containment/Carrier	Code	Price/M
90/32	-	
110/63	-	
160/90	82 785 1690 37	69.05
200/110	82 785 2011 37	102.77
280/160	-	
315/200	-	
355/250	-	

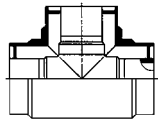
### SDR33/11 PN5 x PN16

Code	Price/M
-	
82 785 1163 31	49.95
82 785 1690 31	73.83
82 785 2011 31	109.73
82 785 2816 31	197.61
82 785 3120 31	241.03
82 785 3525 31	322.81

### SDR17.6/11 PN10 x PN16

Code	Price/M
82 785 9032 71	44.45
-	
-	
-	
-	
-	
-	

## Tee 90° - PE x PE



Size Containment/Carrier	Code	Price
90/32	-	
110/63	-	
160/90	82 106 1690 37	262.75
200/110	82 106 2011 37	335.84
280/160	-	
315/200	-	
355/250	-	

Code	Price
-	
82 106 1163 31	173.71
82 106 1690 31	270.70
82 106 2011 31	343.06
82 106 2816 31	812.08
82 106 3120 31	1159.49
82 106 3525 31	1952.74

Code	Price
82 106 9032 71	143.74
-	
-	
-	
-	
-	
-	



### Need advice?

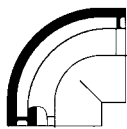
For help with double containment applications please call Kevin Nixon on:

**0800 975 79 71**

Or from outside of the UK:  
+44 191 521 3111



## Bend 90° - PE x PE



### SDR33/17.6 PN5 x PN10

Size Containment/Carrier	Code	Price
90/32	-	
110/63	-	
160/90	82 101 1690 37	178.05
200/110	82 101 2011 37	235.24
280/160	-	
315/200	-	
355/250	-	

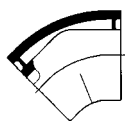
### SDR33/11 PN5 x PN16

Code	Price
-	
82 101 1163 31	125.36
82 101 1690 31	180.23
82 101 2011 31	235.97
82 101 2816 31	526.92
82 101 3120 31	618.83
82 101 3525 31	1243.46

### SDR17.6/11 PN10 x PN16

Code	Price
82 101 9032 71	99.30
-	
-	
-	
-	
-	
-	

## Bend 45° - PE x PE



Size Containment/Carrier	Code	Price
90/32	-	
110/63	-	
160/90	82 102 1690 37	212.79
200/110	82 102 2011 37	278.66
280/160	-	
315/200	-	
355/250	-	

Code	Price
-	
82 102 1163 31	150.54
82 102 1690 31	215.68
82 102 2011 31	283.71
82 102 2816 31	618.12
82 102 3120 31	693.39
82 102 3525 31	1491.00

Code	Price
82 102 9032 71	119.01
-	
-	
-	
-	
-	
-	

## Concentric Reducer - PE x PE



Size Containment/Carrier	Code	Price
110/63x90/32	-	
160/90x90/32	-	
160/90x110/63	82 107 9063 37	186.74
200/110x110/63	-	
200/110x160/90	82 107 1190 37	325.69
280/160x160/90	-	
280/160x200/110	-	
315/200x200/110	-	
315/200x280/160	-	
355/250x280/160	-	
355/250x315/200	-	

Code	Price
-	
82 107 9032 31	241.03
82 107 9063 31	187.47
82 107 1163 31	400.96
82 107 1190 31	327.15
82 107 1690 31	626.78
82 107 1611 31	626.78
82 107 2011 31	810.63
82 107 2016 31	810.63
82 107 2516 31	1729.83
82 107 2520 31	1524.29

Code	Price
82 107 6332 71	111.17
-	
-	
-	
-	
-	
-	
-	
-	
-	

## Cap - PE x PE



Size Containment/Carrier	Code	Price
90/32	-	
110/63	-	
160/90	82 154 1690 37	159.24
200/110	82 154 2011 37	196.14
280/160	-	
315/200	-	
355/250	-	

Code	Price
-	
82 154 1163 31	115.08
82 154 1690 31	159.24
82 154 2011 31	196.14
82 154 2816 31	263.44
82 154 3120 31	327.88
82 154 3525 31	373.47

Code	Price
82 154 9032 71	105.08
-	
-	
-	
-	
-	
-	

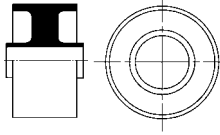


# polyethylene x polyethylene

## Fixed Point Fitting - PE x PE

(Dog Bone Type 1)

Isolates Containment



### SDR33/17.6

#### PN5 x PN10

Size Containment/Carrier	Code	Price
90/32	-	
110/63	-	
160/90	82 137 1690 37	167.20
200/110	82 137 2011 37	205.57
280/160	-	
315/200	-	
355/250	-	

### SDR33/11

#### PN5 x PN16

Code	Price
-	
82 137 1163 31	121.59
82 137 1690 31	167.20
82 137 2011 31	205.57
82 137 2816 31	276.50
82 137 3120 31	344.53
82 137 3525 31	392.29

### SDR17.6/11

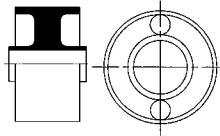
#### PN10 x PN16

Code	Price
82 137 9032 71	110.87
-	
-	
-	
-	
-	
-	

## Fixed Point Fitting - PE x PE

(Dog Bone Type 1)

Continues Containment



Size Containment/Carrier	Code	Price
90/32	-	
110/63	-	
160/90	82 147 1690 37	191.81
200/110	82 147 2011 37	236.66
280/160	-	
315/200	-	
355/250	-	

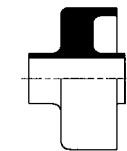
Code	Price
-	
82 147 1163 31	151.99
82 147 1690 31	191.81
82 147 2011 31	236.66
82 147 2816 31	318.45
82 147 3120 31	396.63
82 147 3525 31	450.92

Code	Price
82 147 9032 71	138.68
-	
-	
-	
-	
-	
-	

## Fixed Point Fitting - PE x PE

(Dog Bone Type 1-A)

Terminates Containment



Size Containment/Carrier	Code	Price
90/32	-	
110/63	-	
160/90	82 136 1690 37	167.20
200/110	82 136 2011 37	205.57
280/160	-	
315/200	-	
355/250	-	

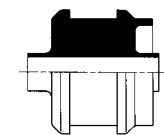
Code	Price
-	
82 136 1163 31	121.59
82 136 1690 31	167.20
82 136 2011 31	205.57
82 136 2816 31	276.50
82 136 3120 31	344.53
82 136 3525 31	392.29

Code	Price
82 136 9032 71	110.87
-	
-	
-	
-	
-	
-	

## Fixed Point Fitting - PE x PE

(Dog Bone Type 2-A)

Terminates Containment



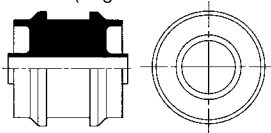
Size Containment/Carrier	Code	Price
90/32	-	
110/63	-	
160/90	82 138 1690 37	235.97
200/110	82 138 2011 37	353.93
280/160	-	
315/200	-	
355/250	-	

Code	Price
-	
82 138 1163 31	154.88
82 138 1690 31	235.97
82 138 2011 31	353.93
82 138 2816 31	481.33
82 138 3120 31	490.72
82 138 3525 31	568.19

Code	Price
82 138 9032 71	134.04
-	
-	
-	
-	
-	
-	

## Fixed Point Fitting - PE x PE

(Dog Bone Type 2)



Size Containment/Carrier	Code	Price
90/32	-	
110/63	-	
160/90	82 139 1690 37	235.97
200/110	82 139 2011 37	353.93
280/160	-	
315/200	-	
355/250	-	

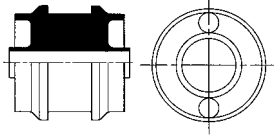
Code	Price
-	
82 139 1163 31	154.88
82 139 1690 31	235.97
82 139 2011 31	353.93
82 139 2816 31	481.33
82 139 3120 31	490.72
82 139 3525 31	568.19

Code	Price
82 139 9032 71	134.04
-	
-	
-	
-	
-	
-	

## Fixed Point Fitting - PE x PE

(Dog Bone Type 2)

Continues Containment



### SDR33/17.6

#### PN5 x PN10

Size Containment/Carrier	Code	Price
90/32	-	
110/63	-	
160/90	82 149 1690 37	270.70
200/110	82 149 2011 37	407.50
280/160	-	
315/200	-	
355/250	-	

### SDR33/11

#### PN5 x PN16

Code	Price
-	
82 149 1163 31	193.98
82 149 1690 31	270.70
82 149 2011 31	407.50
82 149 2816 31	553.70
82 149 3120 31	563.84
82 149 3525 31	652.84

### SDR17.6/11

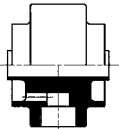
#### PN10 x PN16

Code	Price
82 149 9032 71	167.90
-	
-	
-	
-	
-	
-	

## Fixed Point Fitting - PE x PE

(Leak Detection Connection)

Isolates Containment

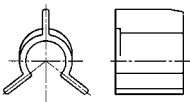


Size Containment/Carrier	Code	Price
90/32	-	
110/63	-	
160/90	82 140 1690 37	283.02
200/110	82 140 2011 37	323.54
280/160	-	
315/200	-	
355/250	-	

Code	Price
-	
82 140 1163 31	240.30
82 140 1690 31	283.02
82 140 2011 31	323.54
82 140 2816 31	399.53
82 140 3120 31	543.82
82 140 3525 31	516.07

Code	Price
82 140 9032 71	223.65
-	
-	
-	
-	
-	
-	

## Spider Clip - PE

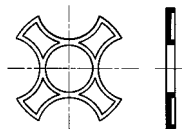


Size Containment/Carrier	Code	Price
90/32	-	
110/63	82 099 1163 33	7.01
160/90	82 099 1690 33	9.27
200/110	82 099 2011 33	10.20
280/160	82 099 2816 33	16.65
315/200	82 099 3120 33	18.82
355/250	82 099 3525 33	19.69

Code	Price
-	
82 099 1163 33	7.01
82 099 1690 33	9.27
82 099 2011 33	10.20
82 099 2816 33	16.65
82 099 3120 33	18.82
82 099 3525 33	19.69

Code	Price
-	
-	
-	
-	
-	
-	

## Support Disc - PE



Size Containment/Carrier	Code	Price
90/32	-	
110/63	82 098 1163 33	7.01
160/90	82 098 1690 33	9.27
200/110	82 098 2011 33	10.20
280/160	82 098 2816 33	16.65
315/200	82 098 3120 33	18.82
355/250	82 098 3525 33	19.69

Code	Price
-	
82 098 1163 33	7.01
82 098 1690 33	9.27
82 098 2011 33	10.20
82 098 2816 33	16.65
82 098 3120 33	18.82
82 098 3525 33	19.69

Code	Price
82 098 9032 17	5.74
-	
-	
-	
-	
-	
-	

## Fast Delivery

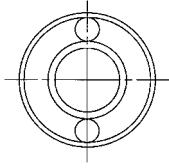
We deliver using our own dedicated vehicles or next day carrier. Using our standard delivery service you can expect to receive your order within 24 hours - to your warehouse, factory or job-site



# polypropylene x polyethylene

## Pipe - PE x PP

5m Lengths



### PN6 x PN10

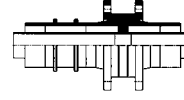
Size Containment/Carrier	Code	Price/M
90/32	83 795 9032 71	34.74
110/63	83 795 1163 71	59.93
160/90	83 795 1690 71	91.77
200/110	83 795 2011 71	128.55
280/160	83 795 2816 71	248.98

Polypropylene carrier pipe

## Fixed Point Fitting - PE x PP

(Dog Bone Type 3)

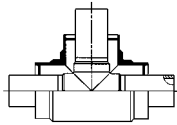
Isolates Containment



### PN6 x PN10

Size Containment/Carrier	Code	Price
90/32	83 239 9032 71	259.11
110/63	83 239 1163 71	398.81
160/90	83 239 1690 71	618.83
200/110	83 239 2011 71	755.63
280/160	83 239 2816 71	1116.07

## Tee 90° - PE x PP



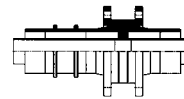
### PN6 x PN10

Size Containment/Carrier	Code	Price
90/32	83 206 9032 71	99.30
110/63	83 206 1163 71	150.54
160/90	83 206 1690 71	222.92
200/110	83 206 2011 71	339.46
280/160	83 206 2816 71	755.63

## Fixed Point Fitting - PE x PP

(Dog Bone Type 3)

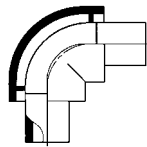
Continues Containment



### PN6 x PN10

Size Containment/Carrier	Code	Price
90/32	83 249 9032 71	329.32
110/63	83 249 1163 71	471.19
160/90	83 249 1690 71	700.61
200/110	83 249 2011 71	841.03
280/160	83 249 2816 71	1220.29

## Bend 90° - PE x PP



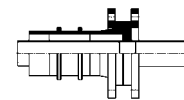
### PN6 x PN10

Size Containment/Carrier	PN3.2 x PN6	
	Code	Price
90/32	83 201 9032 71	58.49
110/63	83 201 1163 71	85.41
160/90	83 201 1690 71	152.74
200/110	83 201 2011 71	217.87
280/160	83 201 2816 71	524.02

## Fixed Point Fitting - PE x PP

(Dog Bone Type 3-A)

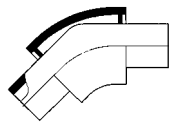
Terminates Containment



### PN6 x PN10

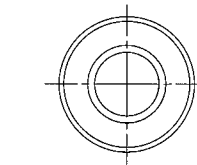
Size Containment/Carrier	Code	Price
90/32	83 238 9032 71	248.98
110/63	83 238 1163 71	382.89
160/90	83 238 1690 71	594.95
200/110	83 238 2011 71	715.95
280/160	83 238 2816 71	1040.81

## Bend 45° - PE x PP

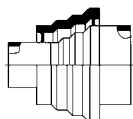


### PN6 x PN10

Size Containment/Carrier	Code	Price
90/32	83 202 9032 71	63.71
110/63	83 202 1163 71	104.68
160/90	83 202 1690 71	165.02
200/110	83 202 2011 71	260.57
280/160	83 202 2816 71	700.61



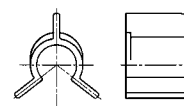
## Concentric Reducer - PE x PP



### PN6 x PN10

Size Containment/Carrier	Code	Price
110/63x90/32	83 207 6332 71	84.70
160/90x90/32	83 207 9032 71	124.06
160/90x125/63	83 207 9063 71	154.88
200/110x125/63	83 207 1163 71	246.82
200/110x160/90	83 207 1190 71	319.91
280/160x160/90	83 207 1690 71	188.20
280/160x200/110	83 207 1611 71	186.74

## Spider Clip - PE

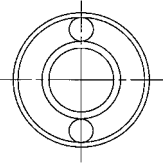


### PN6 x PN10

Size Containment/Carrier	Code	Price
90/32	82 099 9032 71	5.74
110/63	82 099 1163 71	7.93
160/90	82 099 1690 71	9.27
200/110	82 099 2011 71	10.20
280/160	82 099 2816 71	16.65

**Pipe -  
PE x PVDF**

5m Lengths



**PN6 x PN16**

Size Containment/Carrier	Code	Price/M
90/32	84 795 9032 72	84.54
110/63	84 795 1163 72	184.56

**PN6 x PN10**

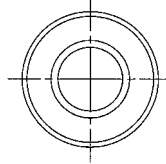
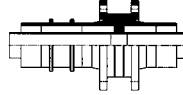
160/90	84 795 1690 73	246.82
200/110	84 795 2011 73	359.00
280/160	84 795 2816 73	720.89

PVDF carrier pipe

**Fixed Point Fitting -  
PE x PVDF**

(Dog Bone Type 3)

Isolates Containment



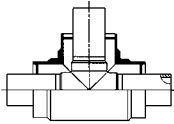
**PN6 x PN16**

Size Containment/Carrier	Code	Price
90/32	84 239 9032 72	485.65
110/63	84 239 1163 72	645.63

**PN6 x PN10**

160/90	84 239 1690 73	990.12
200/110	84 239 2011 73	1173.98
280/160	84 239 2816 73	2214.77

**Tee 90° -  
PE x PVDF**



**PN6 x PN16**

Size Containment/Carrier	Code	Price
90/32	84 206 9032 72	154.88
110/63	84 206 1163 72	351.77

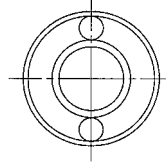
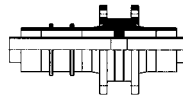
**PN6 x PN10**

160/90	84 206 1690 73	722.34
200/110	84 206 2011 73	909.07
280/160	84 206 2816 73	2303.07

**Fixed Point Fitting -  
PE x PVDF**

(Dog Bone Type 3)

Continues Containment



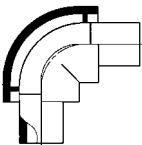
**PN6 x PN16**

Size Containment/Carrier	Code	Price
90/32	84 249 9032 72	555.88
110/63	84 249 1163 72	718.73

**PN6 x PN10**

160/90	84 249 1690 73	1074.09
200/110	84 249 2011 73	1257.92
280/160	84 249 2816 73	2319.00

**Bend 90° -  
PE x PVDF**



**PN6 x PN16**

Size Containment/Carrier	Code	Price
90/32	84 201 9032 72	114.95
110/63	84 201 1163 72	292.41

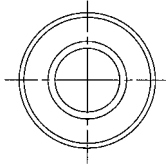
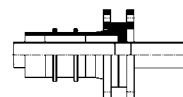
**PN6 x PN10**

160/90	84 201 1690 73	561.66
200/110	84 201 2011 73	835.24
280/160	84 201 2816 73	2197.39

**Fixed Point Fitting -  
PE x PVDF**

(Dog Bone Type 3-A)

Terminates Containment



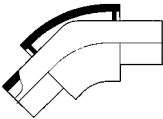
**PN6 x PN16**

Size Containment/Carrier	Code	Price
90/32	84 238 9032 72	471.19
110/63	84 238 1163 72	618.12

**PN6 x PN10**

160/90	84 238 1690 73	949.59
200/110	84 238 2011 73	1108.85
280/160	84 238 2816 73	2091.72

**Bend 45° -  
PE x PVDF**



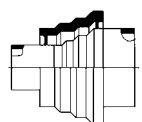
**PN6 x PN16**

Size Containment/Carrier	Code	Price
90/32	84 202 9032 72	115.36
110/63	84 202 1163 72	280.12

**PN6 x PN10**

160/90	84 202 1690 73	565.28
200/110	84 202 2011 73	830.90
280/160	84 202 2816 73	2395.71

**Concentric Reducer -  
PE x PVDF**



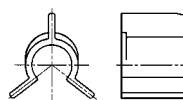
**PN6 x PN16**

Size Containment/Carrier	Code	Price/M
110/63x90/32	84 207 6332 72	165.75
160/90x90/32	84 207 9032 72	317.02
160/90x125/63	84 207 9063 72	364.78

**PN6 x PN10**

200/110x125/63	84 207 1163 73	561.66
200/110x160/90	84 207 1190 73	673.10
280/160x160/90	84 207 1690 73	898.93
280/160x200/110	84 207 1611 73	1163.85

**Spider Clip -  
PP**

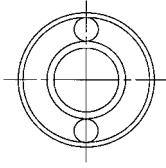


**PN6 x PN16/PN10**

Size Containment/Carrier	Code	Price
90/32	80 099 9032 17	5.74
110/63	80 099 1163 17	8.32
160/90	80 099 1690 17	9.27
200/110	80 099 2011 17	10.20
280/160	80 099 2816 17	16.65

## Pipe - PP x PVDF

5m Lengths



### PN6 x PN16

Size Containment/Carrier	Code	Price/M
90/32	81 795 9032 72	84.54
110/63	81 795 1163 72	184.56

### PN6 x PN10

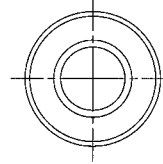
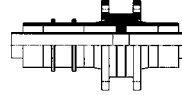
160/90	81 795 1690 73	246.82
200/110	81 795 2011 73	359.00
280/160	81 795 2816 73	720.89

PVDF carrier pipe

## Fixed Point Fitting - PP x PVDF

(Dog Bone Type 3)

Isolates Containment



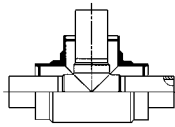
### PN6 x PN16

Size Containment/Carrier	Code	Price
90/32	81 239 9032 72	485.65
110/63	81 239 1163 72	645.63

### PN6 x PN10

160/90	81 239 1690 73	990.12
200/110	81 239 2011 73	1173.98
280/160	81 239 2816 73	2214.77

## Tee 90° - PP x PVDF



### PN6 x PN16

Size Containment/Carrier	Code	Price
90/32	81 206 9032 72	155.62
110/63	81 206 1163 72	353.93

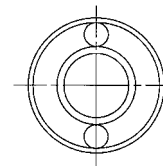
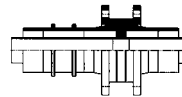
### PN6 x PN10

160/90	81 206 1690 73	725.24
200/110	81 206 2011 73	914.85
280/160	81 206 2816 73	2319.00

## Fixed Point Fitting - PP x PVDF

(Dog Bone Type 3)

Continues Containment



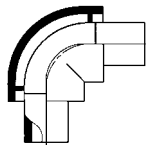
### PN6 x PN16

Size Containment/Carrier	Code	Price
90/32	81 249 9032 72	555.88
110/63	81 249 1163 72	718.73

### PN6 x PN10

160/90	81 249 1690 73	1074.09
200/110	81 249 2011 73	1257.92
280/160	81 249 2816 73	2319.00

## Bend 90° - PP x PVDF



### PN6 x PN16

Size Containment/Carrier	Code	Price
90/32	81 201 9032 72	115.24
110/63	81 201 1163 72	293.14

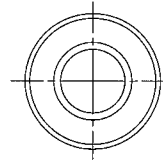
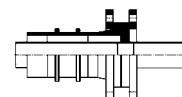
### PN6 x PN10

160/90	81 201 1690 73	563.84
200/110	81 201 2011 73	838.14
280/160	81 201 2816 73	2206.08

## Fixed Point Fitting - PP x PVDF

(Dog Bone Type 3-A)

Terminates Containment



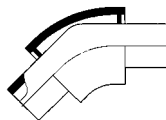
### PN6 x PN16

Size Containment/Carrier	Code	Price
90/32	81 238 9032 72	471.19
110/63	81 238 1163 72	618.12

### PN6 x PN10

160/90	81 238 1690 73	949.59
200/110	81 238 2011 73	1108.85
280/160	81 238 2816 73	2091.72

## Bend 45° - PP x PVDF



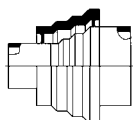
### PN6 x PN16

Size Containment/Carrier	Code	Price
90/32	81 202 9032 72	100.61
110/63	81 202 1163 72	265.63

### PN6 x PN10

160/90	81 202 1690 73	550.08
200/110	81 202 2011 73	807.75
280/160	81 202 2816 73	2366.77

## Concentric Reducer - PP x PVDF



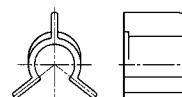
### PN6 x PN16

Size Containment/Carrier	Code	Price
110/63x90/32	81 207 6332 72	166.48
160/90x90/32	81 207 9032 72	318.45
160/90x125/63	81 207 9063 72	366.23

### PN6 x PN10

200/110x125/63	81 207 1163 73	563.10
200/110x160/90	81 207 1190 73	676.74
280/160x160/90	81 207 1690 73	903.28
280/160x200/110	81 207 1611 73	1168.19

## Spider Clip - PP

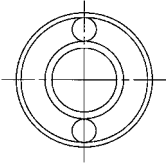


### PN6 x PN16/PN10

Size Containment/Carrier	Code	Price
90/32	80 099 9032 17	5.74
110/63	80 099 1163 17	8.32
160/90	80 099 1690 17	9.27
200/110	80 099 2011 17	10.20
280/160	80 099 2816 17	16.65

**Pipe - PVDF x PVDF**

5m Lengths

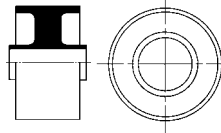


**PN10 x PN16**

Size Containment/Carrier	Code	Price/M
90/32	85 795 9032 32	on application
110/63	85 795 1163 32	on application
160/90	85 795 1690 32	on application
200/110	85 795 2011 32	on application
250/160	85 795 2516 32	on application

**Fixed Point Fitting - PVDF x PVDF**  
(Dog Bone Type 3)

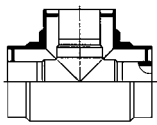
Isolates Containment



**PN10 x PN16**

Size Containment/Carrier	Code	Price
90/32	85 239 9032 32	on application
110/63	85 239 1163 32	on application
160/90	85 239 1690 32	on application
200/110	85 239 2011 32	on application
250/160	85 239 2516 32	on application

**Tee 90° - PVDF x PVDF**

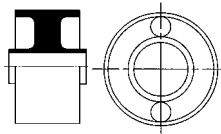


**PN10 x PN16**

Size Containment/Carrier	Code	Price
90/32	85 206 9032 32	on application
110/63	85 206 1163 32	on application
160/90	85 206 1690 32	on application
200/110	85 206 2011 32	on application
250/160	85 206 2516 32	on application

**Fixed Point Fitting - PVDF x PVDF**  
(Dog Bone Type 3)

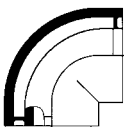
Continues Containment



**PN10 x PN16**

Size Containment/Carrier	Code	Price
90/32	85 249 9032 32	on application
110/63	85 249 1163 32	on application
160/90	85 249 1690 32	on application
200/110	85 249 2011 32	on application
250/160	85 249 2516 32	on application

**Bend 90° - PVDF x PVDF**

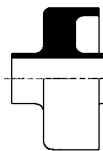


**PN10 x PN16**

Size Containment/Carrier	Code	Price
90/32	85 201 9032 32	on application
110/63	85 201 1163 32	on application
160/90	85 201 1690 32	on application
200/110	85 201 2011 32	on application
250/160	85 201 2516 32	on application

**Fixed Point Fitting - PVDF x PVDF**  
(Dog Bone Type 3-A)

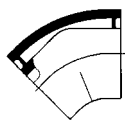
Terminates Containment



**PN10 x PN16**

Size Containment/Carrier	Code	Price
90/32	85 238 9032 32	on application
110/63	85 238 1163 32	on application
160/90	85 238 1690 32	on application
200/110	85 238 2011 32	on application
250/160	85 238 2516 32	on application

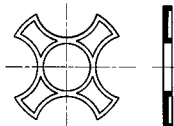
**Bend 45° - PVDF x PVDF**



**PN10 x PN16**

Size Containment/Carrier	Code	Price
90/32	85 202 9032 32	on application
110/63	85 202 1163 32	on application
160/90	85 202 1690 32	on application
200/110	85 202 2011 32	on application
250/160	85 202 2516 32	on application

**Support Disc - PVDF**



**PN10 x PN16**

Size Containment/Carrier	Code	Price
90/32	85 099 9032 32	on application
110/63	85 099 1163 32	on application
160/90	85 099 1690 32	on application
200/110	85 099 2011 32	on application
250/160	85 099 2516 32	on application

**Concentric Reducer - PVDF x PVDF**



**PN10 x PN16**

Size Containment/Carrier	Code	Price
110/63x90/32	85 207 6332 32	on application
160/90x90/32	85 207 9032 32	on application
200/110x110/63	85 207 1163 32	on application
200/110x160/90	85 207 1190 32	on application
250/160x160/90	85 207 1690 32	on application
250/160x200/110	85 207 1611 32	on application

