

Acrylonitrile - Butadiene - Styrene (ABS) is a rigid pressure piping system renowned for its high impact strength and durability which combine to give exceptional toughness.

It is suitable for use over a wide temperature range from -40°C to +70°C at pressures up to 15 bar. ABS is especially useful at sub zero temperatures, where it retains high levels of impact strength.

ABS is resistant to a wide range of abrasive slurries which can damage steel or other pipe materials. It is non-toxic and taint free, and is in widespread use for food products, soft drinks and high purity water.

ABS systems are lightweight, rigid, and easy to install. Joints are made using a solvent cement, which requires no special tools.

application guide

- Temperature Range -40°C to +70°C
- High impact strength
- Abrasion resistant
- Non-toxic and taint free
- Rigid pipes - no special support needed
- Ideal for above and below ground use
- Threading possible
- Resistant to weak acids, weak and strong alkalis
- Sizes from 3/8" to 12" and 16mm to 315mm
- No special jointing tools required

- Not resistant to organic solvents, alcohol, petrol, acetic acid or vegetable oils
- Flammable

standards and approvals

Pipe (inch sizes)	: BS 5391
Pipe (mm sizes)	: DIN 8062
	: KIWA 49
	: ISO 161/1
Fittings (inch sizes)	: BS 5392
Fittings (mm Sizes)	: DIN 8063
	: KIWA 549
	: ISO 727
Threaded fittings	: BS21/DIN 2199/ISO 727

Durapipe ABS is approved by the Drinking Water Inspectorate (DWI) under Regulation 25, and is WRAS listed for use in contact with cold potable water.

section guide

Pipe - Inch Size	212
Solvent Cement, Cleaner	213
Plain Fittings - Inch Size	214
Flanges - Inch Size	219
Adaptor Fittings - Inch Size	222
Threaded Fittings - Inch Size	224
Pipe - mm size	226
Plain Fittings - mm size	228
Flanges - mm size	231
Adaptor Fittings - mm size	233
Ball Valve, Double Union	234
Butterfly Valve	236
Y-Strainer	238
Diaphragm Valve	239
Air Release Valve	240
Pressure Relief Valve	240
Non-Return Valve, Check	241
Ball Valve, Electrically Actuated	242
Ball Valve, Pneumatically Actuated	243
Butterfly Valve, Electrically Actuated	245
Butterfly Valve, Pneumatically Actuated	246
Diaphragm Valve, Pneumatically Actuated	248

about: abs

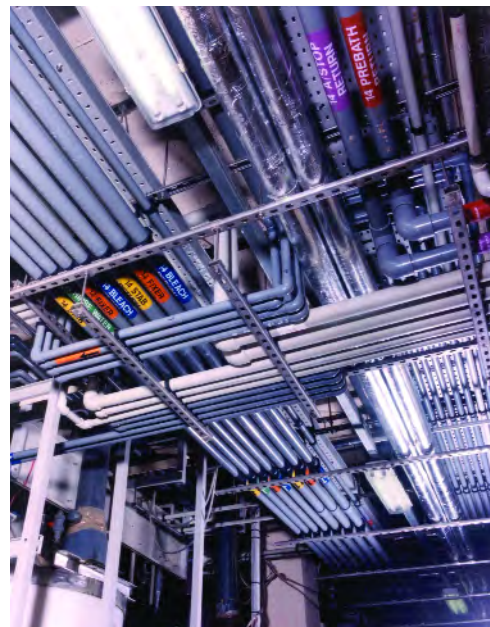
Acrylonitrile Butadiene Styrene (ABS) has been manufactured as a pressure piping system for more than 30 years. It is a widely used versatile material that can also be found in car parts, household goods and DIY tools as well as thermoplastic piping.

ABS is a copolymer of Styrene and Acrylonitrile grafted to Polybutadiene. The chemical resistance of Acrylonitrile, added to the impact strength of Butadiene, combined with the processing properties of Styrene, produce a homogenous material with chemical resistance, ductility and tensile strength.

The Butadiene content of ABS provides exceptional resistance to impact damage at temperatures as low as -40°C and up to 70°C. ABS offers good abrasion resistance to aggressive slurries, and its smooth bore allows high flow velocities whilst inhibiting the formation of scale.

ABS piping systems are joined by solvent cement welding, whilst transition joints can be made using flanges, threaded connections, mechanical fittings, and compression fittings.

ABS piping systems are available from IPS in both inch and metric dimensions, according to BS and ISO standards. Systems are available in inch sizes from 3/8" to 12" and metric sizes from 16mm to 315mm. ABS products are mid grey in colour in accordance with BS5252.



General properties of abs

With the benefit of low temperature handling characteristics down to -40°C, ABS is used extensively for applications in conditioning and chilled water piping systems. Another key benefit is the high impact strength of the material, making ABS ideal for piping systems in exposed situations where potential damage may occur. ABS does not contain metallic stabilisers making it physiologically harmless and therefore suitable for use with food and water applications.

Some of the important advantages of ABS are:

- Low specific weight 1.04g/cm³
- Wide range of applications
- Good chemical and corrosion resistance
- Safe for potable water applications
- High impact strength at low temperatures
- Good abrasion resistance

Properties of ABS (Average values)	
Property	Value
Density	1.03 g/cm ³
Tensile Strength	> 737 N/mm ²
Elongation at Break	> 10%
Impact Strength	44 kJ/m ² (23°C)
Modulus of Elasticity (Young's Modulus)	2100 N/mm ²
Coefficient of Linear Expansion	0.1mm/m °C
Maximum Operating Temperature	70°C
Minimum Operating Temperature	-40°C
Vicat Softening Point	90°C (VST/B 50)
Water Absorption	< 1%
Surface Resistance	Approx. 10 ¹³ Ω
Thermal Conductivity	0.170 W/m · K
Flammability	HB UL94
Colour	Mid Grey

Characteristics

Chemical resistance

ABS displays good chemical resistance to a wide range of chemicals including salt solutions, and most dilute acids and bases. ABS is not resistant to concentrated mineral acids, organic acids and solvents such as esters, ketones and chlorinated and aromatic hydrocarbons. For detailed guidance on the chemical resistance of ABS, consult the chemical resistance tables or our technical department.

Weathering resistance

Over time, ABS will suffer some loss of properties when exposed to UV light. The surface of the material will lose shine and experience some colour change. In extreme cases, the use of insulation or an application of a UV absorbent coating such as AGRU Coat, or the use of a water based paint will help to minimise the effects of solar radiation.

Electrical characteristics

ABS is non-conductive, therefore systems will remain free from electrolytic corrosion. Precautions should be taken to avoid static discharge should any part of a ABS piping system pass through an area where explosive gases may be present.

Physiological characteristics

ABS piping systems from IPS are free from lead, cadmium or other poisonous heavy metals. They are suitable for use in contact with cold potable water, and are WRAS listed for this application.

Pressure ratings for abs systems

Maximum continuous pressure ratings

Pipes, fittings and valves are designed to operate continuously for 50 years at their maximum rated pressure at 20°C as follows, unless otherwise stated.

Inch sizes

ABS pipes according to BS 5391 and ABS fittings according to BS 5392 use the 'class' system of pressure rating their components. Regardless of size, pipes and fittings are rated for use at a maximum working pressure according to the 'class'. Care must be taken to ensure that the integrity of the system is not compromised through the incorrect match of pipes and fittings from different pressure 'classes'. The pressure ratings of inch sized ABS pipes and fittings according to the pressure 'class' system is as follows:-

Pipe	Class	Size Range	Max. Operating Pressure
	Class B	10" to 12"	6 Bar
	Class C	1" to 8"	9 Bar
	Class D	6"	12 Bar
	Class E	3/8" to 4"	15 Bar
	Class T	3/8" to 2"	12 Bar
	PN10*	2 1/2" and 5"	10 Bar
* 2 1/2" and 5" ABS pipes are manufactured to DIN 8062			
Fittings	Class	Size Range	Max. Operating Pressure
	Class B	10" to 12"	6 Bar
	Class C	8"	9 Bar
	Class D	6"	12 Bar
	Class E	3/8" to 4"	15 Bar (3" & 4" socket unions 9 Bar)
	Threaded	3/8" to 4"	12 Bar (3" & 4" barrel nipples 9 Bar)
	PN10*	2 1/2" and 5"	10 Bar
* 2 1/2" and 5" ABS fittings are manufactured to DIN 8063			

Metric sizes

The pressure rating for ABS pipes according to DIN 8062 and ABS fittings according to DIN 8063 is defined by the 'nominal pressure' method, whereby pipes, fittings and valves are grouped together according to a single nominal pressure rating. The PN rating is the maximum permitted operational pressure in bars calculated at 20°C, for example PN6 indicates a maximum working pressure of 6 bars. According to this method the pressure ratings of metric sized ABS pipes and fittings according to the nominal pressure system is as follows:-

		Size Range	Max. Operating Pressure
Pipe	PN10	16mm to 315mm	10 Bar
Fittings	PN10	16mm to 315mm	10 Bar (315mm 8 Bar)



ABS piping systems from IPS are available in both industrial and economy ranges.

The Durapipe industrial system has a proven 30 year track record as an industrial grade system. It is approved under DWI (Drinking Water Inspectorate) Regulation 31 and by WRAS (Water Regulations Advisory Scheme). It is appropriate for all ABS applications.

Economy ABS systems are ideal for applications involving water and/or weak chemicals.

Pipe Class E

6 Metre Lengths

Size	Nominal Bore	Maximum Pressure (bar)	Weight/m (kg)	O.D. (mm)	Minimum Wall (mm)	Standard Range		Industrial Range	
						Code	Price/m	Code	Price/M
1/2	15	15	0.14	21.4	1.9	ABS005EPE	3.52	01 513 102	4.17
3/4	20	15	0.21	26.5	2.4	ABS007EPE	5.44	01 513 103	6.41
1	25	15	0.33	33.6	3.0	ABS010EPE	7.13	01 513 104	8.47
1 1/4	32	15	0.52	42.2	3.8	ABS012EPE	10.66	01 513 105	12.59
1 1/2	40	15	0.68	48.3	4.4	ABS015EPE	14.07	01 513 106	16.63
2	50	15	1.06	60.3	5.4	ABS020EPE	17.59	01 513 107	20.83
3	75	15	2.28	88.9	8.1	ABS030EPE	35.44	01 513 109	41.87
4	100	15	3.76	114.3	10.3	ABS040EPE	56.91	01 513 110	67.34

Pipe Class D

6 Metre Lengths

Size	Nominal Bore	Maximum Pressure (bar)	Weight/m (kg)	O.D. (mm)	Minimum Wall (mm)	Standard Range		Industrial Range	
						Code	Price/m	Code	Price/M
6	150	12	6.88	168.3	12.3	ABS060DPE	111.25	01 512 112	131.60

Pipe Class C

6 Metre Lengths

Size	Nominal Bore	Maximum Pressure (bar)	Weight/m (kg)	O.D. (mm)	Minimum Wall (mm)	Standard range		Industrial Range	
						Code	Price/m	Code	Price/M
1	25	9	0.22	33.6	1.9	ABS010CPE	4.61	01 511 104	5.45
1 1/4	32	9	0.34	42.2	2.4	ABS012CPE	7.75	01 511 105	9.16
1 1/2	40	9	0.45	48.3	2.7	ABS015CPE	9.85	01 511 106	11.64
2	50	9	0.7	60.3	3.4	ABS020CPE	13.25	01 511 107	15.69
2 1/2*	65	9	1.35	75.0	4.7	ABS025CPE	22.96	11 555 312	27.12
3	75	9	1.48	88.9	5.0	ABS030CPE	27.37	01 511 109	32.34
4	100	9	2.48	114.3	6.4	ABS040CPE	45.08	01 511 110	53.31
5*	125	9	4.65	140.0	8.8	ABS050CPE	88.32	11 555 316	104.44
6	150	9	5.47	168.3	9.4	ABS060CPE	89.15	01 511 112	105.40
8	200	9	9.53	219.1	12.2	ABS080CPE	160.32	01 511 113	181.01

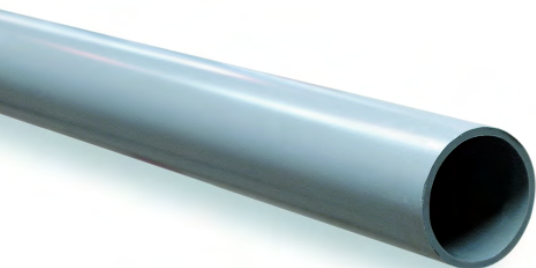
*Maximum pressure 10 bar - 5 metre length

Pipe Class T

6 Metre Lengths - Suitable for Threading

Size	Nominal Bore	Maximum Pressure (bar)	Weight/m (kg)	O.D. (mm)	Minimum Wall (mm)	Standard Range		Industrial Range	
						Code	Price/m	Code	Price/M
3/8	10	12	0.16	17.1	3.4	-		01 514 101	5.45
1/2	15	12	0.22	21.4	3.5	ABS005TPE	6.04	01 514 102	7.14
3/4	20	12	0.29	26.5	3.5	ABS007TPE	6.87	01 514 103	8.09
1	25	12	0.44	33.6	4.2	ABS010TPE	9.76	01 514 104	11.52
1 1/4	32	12	0.68	42.2	5.1	ABS012TPE	17.11	01 514 105	20.20
1 1/2	40	12	0.87	48.3	5.8	ABS015TPE	17.31	01 514 106	20.47
2	50	12	1.31	60.3	7.0	ABS020TPE	23.54	01 514 107	27.85

Please note that a transportation surcharge may be applied on pipe diameters 10" or larger - please enquire for details



Durapipe One-Step Solvent Cement

Size	Code	Price
500ml tin	03 461 395	12.96
1 litre tin	03 461 396	23.24

AVF ABS Solvent Cement

Size	Code	Price
500ml tin	3119-300	10.59



Cleaning Fluid

Size	Code	Price
1/2 litre tin	765-300	8.73



Brushes

Size	Code	Price
8mm round	L151/8R	1.60
25 x 10mm flat	565/1	1.77
50 x 10mm flat	565/2	4.05
75 x 10mm flat	565/3	10.64



Durapipe One-Step Cement

Making secure ABS joints is fast and easy with this new cement:

- Cut pipe square
- Chamfer the pipe end
- Clean surfaces to be joined
- Apply cement to pipe, then to fitting
- Bring together

Pipework Support

ABS pipework requires more support than for metallic systems. As working temperature increases, the distance between supports is reduced.

Pipe Size	Support Centres/m		
	20°C	50°C	70°C
16mm/ 3/8"	0.8	0.5	0.4
20mm/ 1/2"	0.9	0.6	0.5
25mm/ 3/4"	1.0	0.7	0.6
32mm/ 1"	1.1	0.8	0.7
40mm/ 1 1/4"	1.2	0.9	0.7
50mm/ 1 1/2"	1.3	1.0	0.7
63mm/ 2"	1.4	1.1	0.8
75mm/ 2 1/2"	1.5	1.2	0.8
90mm/ 3"	1.6	1.2	0.9
110mm/ 4"	1.8	1.3	1.0
125mm	1.9	1.4	1.0
140mm/ 5"	2.0	1.5	1.1
160mm/ 6"	2.1	1.6	1.2
200mm	2.2	1.7	1.3
225mm/ 8"	2.3	1.8	1.5
250mm	2.5	2.0	1.7
280mm/ 10"	2.7	2.2	1.9
315mm/ 12"	2.9	2.4	2.1

Temperature De-Rating Factors

Pressure ratings for ABS pipework systems are always quoted at 20°C. As working temperature increases, the maximum working pressure decreases by the factor indicated.

Working Temperature (°C)	Pressure De-rating Factor
20	1.00
30	0.85
40	0.72
50	0.58
60	0.45
70	0.28

How much Solvent Cement?

Estimate the number of joints per size, then use this table to calculate how much solvent cement to order.

Inch Size	mm Size	Joints Per Litre
3/8-1	16-32	400
1 1/4-2	40-63	200
2 1/2-3	75-90	70
4	110-125	45
5-6	140-160	25
8	200-225	15
10-12	250-315	4

You will require approximately half as much cleaner.

What size Brush?

It is important to use the correct size brush to apply solvent cement.

Inch Size	mm Size	Brush Size
1/4-1	16-32	8mm round
1 1/4-2	40-63	25 x 10mm flat
2 1/2-5	75-140	50 x 10mm flat
6-12	160-315	75 x 10mm flat

plain fittings inch sizes



Tee 90°



Standard Range

Size	Code	Price
3/8	-	
1/2	3101-005	2.41
3/4	3101-007	3.34
1	3101-010	4.70
1 1/4	3101-012	6.66
1 1/2	3101-015	9.82
2	3101-020	14.92
2 1/2	3101-025	25.90
3	3101-030	43.65
4	3101-040	64.06
5	3101-050	170.05
6	3101-060	224.03
8	3101-080	366.26

Industrial Range

Code	Price
01 122 101	2.38
01 122 102	2.84
01 122 103	3.96
01 122 104	5.45
01 122 105	7.85
01 122 106	11.52
01 122 107	17.61
11 122 312	30.49
01 122 109	51.39
01 122 110	75.45
11 122 316	200.34
01 122 112	263.66
01 122 113	411.08

Swept Tee 90°



Standard Range

Size	Code	Price
1	-	
1 1/2	-	
2	-	
2 1/2	-	
4	-	

Industrial Range

Code	Price
01 148 104	10.68
01 148 106	19.05
01 148 107	28.08
11 148 312	44.74
01 148 110	124.66

Reducing Tee 90°



Standard Range

Size	Code	Price
3/4x1/2	-	
1x1/2	-	
1x3/4	-	

Industrial Range

Code	Price
01 124 122	4.04
01 124 123	5.73
01 124 124	5.73

Saddle 90°



Standard Range

Size	Code	Price
2x1 1/4	-	
3x1 1/2	-	
4x2	-	
6x2	-	

Industrial Range

Code	Price
01 126 129	24.76
01 126 134	33.03
01 126 140	37.28
01 126 146	43.33

Tee 45°



Standard Range

Size	Code	Price
1/2	-	
3/4	-	
1	-	
1 1/4	-	
1 1/2	-	
2	-	

Industrial Range

Code	Price
01 128 102	12.73
01 128 103	13.44
01 128 104	15.23
01 128 105	18.44
01 128 106	23.09
01 128 107	35.23



Elbow 90°



Standard Range

Size	Code	Price
3/8	-	
1/2	3106-005	2.17
3/4	3106-007	2.52
1	3106-010	3.52
1 1/4	3106-012	6.03
1 1/2	3106-015	7.83
2	3106-020	11.79
2 1/2	3106-025	22.68
3	3106-030	34.00
4	3106-040	50.74
5	3106-050	116.97
6	3106-060	203.35
8	3106-080	327.51

Industrial Range

Code	Price
01 115 101	2.21
01 115 102	2.50
01 115 103	2.95
01 115 104	4.17
01 115 105	7.04
01 115 106	9.16
01 115 107	13.92
11 115 312	26.64
01 115 109	39.97
01 115 110	59.71
11 115 316	137.78
01 115 112	240.31
01 115 113	366.81

Bend 90°



Standard Range

Size	Code	Price
1/2	3106-005SR	7.83
3/4	3106-007SR	9.08
1	3106-010SR	12.77
1 1/4	3106-012SR	18.26
1 1/2	3106-015SR	22.86
2	3106-020SR	30.32
2 1/2	3106-025SR	59.74
3	3106-030SR	77.56
4	3106-040SR	127.76

Industrial Range

Code	Price
01 118 102	9.16
01 118 103	10.68
01 118 104	15.01
01 118 105	21.51
01 118 106	26.89
01 118 107	35.68
11 118 312	74.24
01 118 109	91.12
01 118 110	150.38

Elbow 45°



Standard Range

Size	Code	Price
3/8	-	
1/2	3117-005	4.08
3/4	3117-007	4.14
1	3117-010	5.23
1 1/4	3117-012	7.56
1 1/2	3117-015	9.46
2	3117-020	13.06
2 1/2	3117-025	20.61
3	3117-030	30.69
4	3117-040	63.70
5	3117-050	108.00
6	3117-060	132.26
8	3117-080	296.92

Industrial Range

Code	Price
01 119 101	4.17
01 119 102	4.79
01 119 103	4.88
01 119 104	6.07
01 119 105	8.92
01 119 106	11.06
01 119 107	15.36
11 119 312	24.27
01 119 109	36.16
01 119 110	74.95
11 119 316	127.30
01 119 112	155.36
01 119 113	355.24



Pressure Ratings

ABS systems are suitable for continuous use at the following maximum operating pressures:

Pipes:

- Class B - 6 bar
- Class C - 9 bar
- Class D - 12 bar
- Class E - 15 bar
- Class T - 12 bar

Fittings:

- 3/8" to 4" - 15 bar
- 6" - 12 bar
- 8" - 9 bar
- 10" and 12" - 6 bar

All pressure ratings are calculated at 20°C

plain fittings inch sizes

Bend 90°

Long Radius



Standard Range

Size	Code	Price
3	3106-030LR	95.09
4	3106-040LR	191.30
5	-	
6	3106-060LR	422.52
8	-	

Industrial Range

Code	Price
01 309 109	111.34
01 309 110	225.10
11 309 316	422.35
01 309 112	497.29
01 309 113	1090.20

Bend 45°

Long Radius



Standard Range

Size	Code	Price
1	-	
1½	3117-015LR	22.50
2	3117-020LR	37.15
3	3117-030LR	74.75
4	3117-040LR	152.87
5	-	
6	-	
8	-	

Industrial Range

Code	Price
01 310 104	15.60
01 310 106	26.44
01 310 107	43.75
01 310 109	91.36
01 310 110	179.87
11 310 316	355.47
01 310 112	414.01
01 310 113	826.71

Bend 22½°

Long Radius



Standard Range

Size	Code	Price
1	-	
1½	3116-015LR	31.14
2	3116-020LR	52.00
2½	-	
3	3116-030LR	109.22
4	3116-040LR	222.23
5	-	
6	3116-060LR	488.23
8	-	

Industrial Range

Code	Price
01 311 104	21.65
01 311 106	36.65
01 311 107	61.15
11 311 312	91.36
01 311 109	128.48
01 311 110	261.48
11 311 316	485.41
01 311 112	574.60
01 311 113	1153.80



Industrial vs Standard Range

The Durapipe industrial ABS system has a proven 30 year track record as an industrial grade system. It is approved under DWI Regulation 31 and by WRAS (Water Regulations Advisory Scheme). Standard ABS systems are ideal for applications involving water and weak chemicals, and also carry WRAS Approval.

Socket



Standard Range

Size	Code	Price
3/8	-	
1/2	3129-005	1.61
3/4	3129-007	1.79
1	3129-010	2.07
1 1/4	3129-012	3.60
1 1/2	3129-015	4.24
2	3129-020	6.03
2 1/2	3129-025	13.06
3	3129-030	24.01
4	3129-040	34.18
5	3129-050	66.48
6	3129-060	85.30
8	3129-080	179.05

Industrial Range

Code	Price
01 100 101	1.69
01 100 102	1.83
01 100 103	2.06
01 100 104	2.38
01 100 105	4.17
01 100 106	5.01
01 100 107	7.04
11 100 312	15.36
01 100 109	28.31
01 100 110	40.18
11 100 316	78.77
01 100 112	100.41
01 100 113	200.54

O-Ring Socket



Standard Range

Size	Code	Price
2	-	
3	-	
4	-	
6	-	
8	-	

Industrial Range

Code	Price
01 305 107	23.09
01 305 109	38.54
01 305 110	58.29
01 305 112	221.28
01 305 113	263.21

Adaptor Socket

Inch x mm



Standard Range

Size	Code	Price
1/2x20	-	
3/4x25	-	
1x32	-	
1 1/4x40	-	
1 1/2x50	-	
2x63	-	
3x90	-	
4x110	-	
6x160	-	

Industrial Range

Code	Price
11 345 102	2.50
11 345 103	2.82
11 345 104	3.43
11 345 105	4.64
11 345 106	6.77
11 345 107	15.36
11 345 109	28.08
11 345 110	45.43
11 345 112	105.40

Reducing Socket



Standard Range

Size	Code	Price
3/4x1 1/2	-	
1x3/4	-	
1 1/4x1	-	
1 1/2x1 1/4	-	
2x1 1/2	-	
3x2	-	
4x3	-	
6x4	-	
8x6	-	

Industrial Range

Code	Price
01 114 122	2.19
01 114 124	2.75
01 114 125	5.23
01 114 127	5.82
01 114 130	9.07
01 114 135	26.89
01 114 141	40.18
01 114 147	145.61
01 114 152	225.31

plain fittings inch sizes

Union

EPDM O-Ring



Standard Range

Size	Code	Price
3/8	-	-
1/2	3197-005	8.37
3/4	3197-007	9.08
1	3197-010	12.23
1 1/4	3197-012	14.92
1 1/2	3197-015	20.61
2	3197-020	26.91
2 1/2*	3197-025	65.15
3**	3197-030	99.68
4**	3197-040	134.26

Industrial Range

Code	Price
01 205 101	8.21
01 205 102	9.89
01 205 103	10.68
01 205 104	14.38
01 205 105	17.61
01 205 106	24.27
01 205 107	31.65
11 205 312	76.59
01 205 109	117.31
01 205 110	158.02

* Maximum pressure 10 bar

** Maximum pressure 9 bar

Union

FPM O-Ring



Standard Range

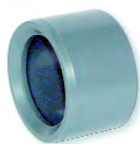
Size	Code	Price
3/8	-	-
1/2	-	-
3/4	-	-
1	-	-
1 1/4	-	-
1 1/2	-	-
2	-	-
3**	-	-

Industrial Range

Code	Price
01 204 101	8.71
01 204 102	10.57
01 204 103	11.37
01 204 104	15.31
01 204 105	18.70
01 204 106	25.79
01 204 107	33.71
01 204 109	127.29

** Maximum pressure 9 bar

Reducing Bush



Standard Range

Size	Code	Price
1/2x3/8	3137-073	1.53
3/4x1/2	3137-101	1.61
1x1/2	3137-130	2.07
1x3/4	3137-131	2.07
1 1/4x1/2	-	-
1 1/4x3/4	-	-
1 1/4x1	3137-168	2.70
1 1/2x1/2	-	-
1 1/2x3/4	3137-210	3.52
1 1/2x1	3137-211	3.52
1 1/2x1 1/4	3137-212	3.52
2x3/4	-	-
2x1	3137-249	4.70
2x1 1/4	3137-250	4.70
2x1 1/2	3137-251	4.70
2 1/2x1 1/2	3137-291	8.01
2 1/2x2	3137-292	8.37
3x1 1/2	3137-337	14.40
3x2	3137-338	14.40
3x2 1/2	3137-339	14.40
4x2	3137-420	18.00
4x3	3137-422	18.00
5x4	3137-490	52.00
6x4	3137-532	55.44
6x5	-	-
8x6	3137-585	119.67

Industrial Range

Code	Price
01 109 121	1.43
01 109 122	1.83
01 109 123	2.38
01 109 124	2.38
01 109 116	3.32
01 109 117	3.32
01 109 125	3.32
01 109 118	4.17
01 109 119	4.17
01 109 126	4.17
01 109 127	4.17
01 109 120	5.45
01 109 128	5.45
01 109 129	5.45
01 109 130	5.45
-	-
01 109 131	9.89
01 109 134	15.36
01 109 135	15.36
01 109 136	16.91
-	-
01 109 141	21.17
01 329 142	61.15
01 109 147	65.19
01 329 148	80.44
01 109 152	134.47

Cap



Standard Range

Size	Code	Price
3/8	-	-
1/2	3147-005	1.53
3/4	3147-007	1.79
1	3147-010	2.07
1 1/4	3147-012	3.34
1 1/2	3147-015	5.12
2	3147-020	6.66
2 1/2	3147-025	16.74
3	3147-030	19.71
4	3147-040	30.15
5	3147-050	53.55
6	3147-060	80.00
8	3147-080	146.70

Industrial Range

Code	Price
01 140 101	1.43
01 140 102	1.79
01 140 103	2.06
01 140 104	2.37
01 140 105	3.96
01 140 106	6.07
01 140 107	7.71
11 149 312	19.75
01 140 109	23.18
01 140 110	35.44
-	-
-	-

Stub Flange

Serrated Face



Standard Range

Size	Code	Price
1/2	3154-005	1.89
3/4	3154-007	2.35
1	3154-010	2.41
1 1/4	3154-012	4.51
1 1/2	3154-015	6.37
2	3154-020	9.82
2 1/2	3154-025	15.57
3	3154-030	19.16
4	3154-040	24.83
5	3154-050	57.05
6	3154-060	64.51
8	3154-080	134.96

Industrial Range

Code	Price
-	
-	
-	
-	
-	
01 135 107	11.52
11 135 312	18.32
01 135 109	22.58
01 135 110	29.28
11 135 316	67.08
01 135 112	75.92
01 135 113	151.72

Full Face Flange

Drilled BS 10 Table D&E



Standard Range

Size	Code	Price
1/2	3151-005E	8.92
3/4	3151-007E	9.08
1	3151-010E	9.54
1 1/4	3151-012E	11.43
1 1/2	3151-015E	13.41
2	3151-020E	17.54
3	3151-030E	32.94
4 Table D	-	
4 Table E	3151-040E	43.88
6	-	

Industrial Range

Code	Price
01 130 102	10.49
01 130 103	10.68
01 130 104	11.19
01 130 105	13.44
01 130 106	15.69
01 130 107	20.58
01 130 109	39.49
01 317 110	47.81
01 130 110	51.63
01 130 112	96.13

Full Face Flange

Drilled BS4504 PN10/16



Standard Range

Size	Code	Price
1/2	3151-005N	8.92
3/4	3151-007N	9.08
1	3151-010N	9.54
1 1/4	3151-012N	11.43
1 1/2	3151-015N	13.31
2	3151-020N	17.54
3	3151-030N	32.94
4	3151-040N	43.88
6	-	

Industrial Range

Code	Price
01 319 102	10.95
01 319 103	11.06
01 319 104	11.64
01 319 105	14.04
01 319 106	16.42
01 319 107	21.42
01 319 109	40.70
01 319 110	53.75
01 319 112	99.68

Full Face Flange

Drilled ANSI 150



Standard Range

Size	Code	Price
1/2	-	
3/4	-	
1	-	
1 1/2	-	
2	-	
3	-	
4	-	
6	-	

Industrial Range

Code	Price
01 322 102	10.95
01 322 103	11.06
01 322 104	11.64
01 322 106	16.42
01 322 107	21.42
01 322 109	40.70
01 322 110	53.75
01 322 112	99.68

Full Face Flange

Undrilled



Standard Range

Size	Code	Price
1/2	-	
3/4	-	
1	-	
1 1/4	-	
1 1/2	-	
2	-	
3	-	
4	-	
6	-	

Industrial Range

Code	Price
01 129 102	10.32
01 129 103	10.49
01 129 104	11.06
01 129 105	12.95
01 129 106	15.36
01 129 107	20.11
01 129 109	38.07
01 129 110	50.24
01 129 112	94.24

flanges inch sizes

Blind Flange

Drilled BS 10 Table D&E



Standard Range

Size	Code	Price
2	3153-020E	39.94
3	3153-030E	70.19
4 Table D	3153-040D	89.09
4 Table E	3153-040E	89.09
6	3153-060E	156.21
8	-	

Industrial Range

Code	Price
01 313 107	37.37
01 313 109	66.15
01 313 110	85.39
01 313 110	85.39
01 313 112	155.61
01 313 113	218.27

Blind Flange

Drilled BS4504 PN10/16



Standard Range

Size	Code	Price
2	3153-020N	39.94
2 1/2	3153-025N	50.26
3	3153-030N	70.19
4	3153-040N	89.09
5	-	
6	3153-060N	156.21
8*	-	

*PN16 only

Industrial Range

Code	Price
01 323 107	37.37
11 323 312	50.24
01 323 109	66.15
01 323 110	85.39
11 323 316	121.35
01 323 112	155.61
01 323 113	218.27

Blind Flange

Drilled ANSI 150



Standard Range

Size	Code	Price
2	3153-020A	34.79
3	3153-030A	61.12
4	3153-040A	80.62
6	-	
8	-	

Industrial Range

Code	Price
01 325 107	37.37
01 325 109	66.15
01 325 110	85.39
01 325 112	155.61
01 325 113	218.27

Blind Flange

Undrilled



Standard Range

Size	Code	Price
1	-	
1 1/2	-	
2	3153-020U	39.94
3	3153-030U	70.19
4	3153-040U	88.87
6	3153-060U	156.21
8	-	

Industrial Range

Code	Price
01 131 104	29.02
01 131 106	33.55
01 131 107	37.37
01 131 109	66.15
01 131 110	85.39
01 131 112	155.61
01 131 113	218.27



Flange Pressure Ratings

Not all ABS flanges carry the same pressure rating as the pipe.

This is the maximum working pressure of the flange at 20°C:-

BS 10 Table D: 100 psi (6.9 bar)

BS 10 Table E: 200 psi (13.8 bar)

BS 4504 PN10: 10 bar

BS 4504 PN16: 16 bar

ANSI 150: 10 bar

Take care to select the correct flange for the job.

Backing Ring Table D/E

Galvanised Mild Steel



Size	Standard Range	Industrial Range	Price
1/2	860-005-12E	-	5.71
3/4	860-007-12E	-	6.47
1	860-010-12E	-	6.79
1 1/4	860-012-12E	-	7.00
1 1/2	860-015-12E	-	8.59
2	860-020-11E	860-020-11E	12.18
3	860-030-11E	860-030-11E	18.50
4 Table D	860-040-11D	860-040-12D	23.91
4 Table E	860-040-11E	860-040-12E	23.91
6	860-060-12E	860-060-12E	40.45
8	860-080-12E	860-080-13E	54.73
10	-	860-100-12E	77.42
12	-	860-120-12E	114.24

Backing Ring NP10/16

Galvanised Mild Steel



Size	Standard Range	Industrial Range	Price
1/2	860-005-12NP	-	6.47
3/4	860-007-12NP	-	6.85
1	860-010-12NP	-	8.13
1 1/4	860-012-12NP	-	8.64
1 1/2	860-015-12NP	-	9.48
2	860-020-11NP	860-020-11NP	13.39
2 1/2	860-025-11NP	860-025-11NP	18.33
3	860-030-11NP	860-030-11NP	21.20
4	860-040-11NP	860-040-12NP	27.11
5	860-050-11NP	860-050-11NP	37.75
6	860-060-12NP	860-060-12NP	43.04
8 PN10	860-080-12N	860-080-13N	60.52
8 PN16	860-080-12P	860-080-13P	60.52
10*	-	860-100-12N	84.04
12*	-	860-120-12N	114.24

* NP10 only

Backing Ring ASA 150

Galvanised Mild Steel



Size	Standard Range	Industrial Range	Price
1/2	860-005-12A	-	6.47
3/4	860-007-12A	-	6.85
1	860-010-12A	-	8.13
1 1/4	860-012-12A	-	8.64
1 1/2	860-015-12A	-	9.48
2	860-020-11A	860-020-11A	13.39
3	860-030-11A	860-030-11A	21.20
4	860-040-11A	860-040-12A	27.11
6	860-060-12A	860-060-12A	43.04
8	860-080-12A	860-080-13A	59.39

Valve Support Plate

Galvanised Mild Steel - NP10/16



Size	Code	Price
1/2	03 458 102	17.97
3/4	03 458 103	19.13
1	03 458 104	20.20
1 1/4	03 458 105	23.59
1 1/2	03 458 106	28.94
2	03 458 107	32.45
2 1/2	03 459 312	36.01
3	03 458 109	44.12
4	03 458 110	52.31
6	03 458 112	81.28
8*	03 458 113	146.17

*NP16 only

Stub Gasket

EPDM



Size	Standard Range	Industrial Range	Price
1/2	861-_-005	861-_-005	0.50
3/4	861-_-007	861-_-007	0.58
1	861-_-010	861-_-010	0.64
1 1/4	861-_-012	861-_-012	0.80
1 1/2	861-_-015	861-_-015	0.96
2	861-_-020	861-_-020	1.65
2 1/2	861-_-025	861-_-025	2.02
3	861-_-031	861-_-031	2.17
4	861-_-040	861-_-040	3.16
5	861-_-050	861-_-050	4.07
6	861-_-180	861-_-060	4.66
8	861-_-225	861-_-081	9.25
10	861-_-280	861-_-280	11.34
12	861-_-120	861-_-120	12.86

Complete code when ordering

Insert 'ISO' for NP10/16; 'A' for ANSI 150; 'E' for Table D/E

Stub Gasket

FPM



Size	Standard Range	Industrial Range	Price
1/2	862-_-005	862-_-005	2.34
3/4	862-_-007	862-_-007	3.48
1	862-_-010	862-_-010	4.59
1 1/4	862-_-012	862-_-012	7.36
1 1/2	862-_-015	862-_-015	8.05
2	862-_-020	862-_-020	10.60
2 1/2	862-_-025	862-_-025	15.34
3	862-_-031	862-_-031	20.01
4	862-_-040	862-_-040	34.14
5	862-_-050	862-_-050	56.98
6	862-_-180	862-_-060	56.98
8	862-_-225	862-_-081	68.24
10	862-_-280	862-_-280	92.89
12	862-_-120	862-_-120	96.97

Complete code when ordering

Insert 'ISO' for NP10/16; 'A' for ANSI 150; 'E' for Table D/E

Gasket

EPDM - full face



Size	Standard Range	Industrial Range	Price
1/2	863-_-005	863-_-005	1.74
3/4	863-_-007	863-_-007	1.96
1	863-_-010	863-_-010	2.34
1 1/4	863-_-012	863-_-012	2.79
1 1/2	863-_-015	863-_-015	3.31
2	863-_-020	863-_-020	4.07
3	863-_-031	863-_-031	5.71
4	863-_-040	863-_-040	7.98
6	863-_-180	863-_-060	12.86
8	863-_-225	863-_-081	15.99

Complete code when ordering

Insert 'ISO' for NP10/16; 'A' for ANSI 150; 'E' for Table D/E

Gasket

FPM - full face



Size	Standard Range	Industrial Range	Price
1/2	864-_-005	864-_-005	13.82
3/4	864-_-007	864-_-007	15.93
1	864-_-010	864-_-010	19.84
1 1/4	864-_-012	864-_-012	21.81
1 1/2	864-_-015	864-_-015	25.84
2	864-_-020	864-_-020	33.22
3	864-_-031	864-_-031	47.05
4	864-_-040	864-_-040	64.34
6	864-_-180	864-_-060	104.63
8	864-_-225	864-_-081	113.96

Complete code when ordering

Insert 'ISO' for NP10/16; 'A' for ANSI 150; 'E' for Table D/E

adaptor fittings inch sizes

Tee 90°

Plain Socket
x BSP Female Thread



Standard Range

Size	Code	Price
1/2	3102-005	5.86
3/4	3102-007	6.50
1	3102-010	7.83
1 1/4	3102-012	16.37
1 1/2	3102-015	18.07
2	3102-020	25.40
2 1/2	3102-025	39.60
3	3102-030	47.51

Industrial Range

Code	Price
-	
-	
-	
-	
-	
-	
-	
-	

Elbow 90°

Plain Socket
x BSP Female Thread



Standard Range

Size	Code	Price
1/2	3107-005	5.47
3/4	3107-007	5.86
1	3107-010	7.56
1 1/4	3107-012	15.48
1 1/2	3107-015	17.28
2	3107-020	24.48
3	3107-030	45.26

Industrial Range

Code	Price
01 116 102	6.41
01 116 103	6.91
01 116 104	8.92
-	
01 116 106	20.35
01 116 107	28.81
-	

Socket

Plain Socket
x BSP Female Thread



Standard Range

Size	Code	Price
1/2	3135-005BT	4.41
3/4	3135-007BT	4.87
1	3135-010BT	6.03
1 1/4	3135-012BT	9.46
1 1/2	3135-015BT	11.06
2	3135-020BT	14.58
3	3135-030BT	39.86
4	3135-040BT	46.77

Industrial Range

Code	Price
01 101 102	5.23
01 101 103	5.73
01 101 104	7.04
01 101 105	11.06
01 101 106	12.95
01 101 107	17.15
01 101 109	46.87
-	

Union

Plain Socket
x Brass BSP Female
Thread



Standard Range

Size	Code	Price
1/2	-	
3/4	-	
1	-	
1 1/4	-	
1 1/2	-	
2	-	

Industrial Range

Code	Price
01 212 102	13.92
01 212 103	20.20
01 212 104	23.42
01 212 105	32.10
01 212 106	45.20
01 212 107	67.34

Union

Plain Socket
x Brass BSP Male
Thread



Standard Range

Size	Code	Price
1/2	-	
3/4	-	
1	-	
1 1/4	-	
1 1/2	-	
2	-	

Industrial Range

Code	Price
01 217 102	15.01
01 217 103	22.02
01 217 104	25.21
01 217 105	35.44
01 217 106	48.77
01 217 107	71.16

Reducing Bush

Plain Spigot
x BSP Female Thread



Standard Range

Size	Code	Price
1/2x3/8	3138-073	3.15
3/4x1/2	3138-101	3.67
1x3/4	3138-131	4.87

Industrial Range

Code	Price
01 111 121	3.67
01 111 122	4.28
01 111 124	5.73

Adaptor

Plain Spigot
x BSP Female Thread



Standard Range

Size	Code	Price
1/2	3178-005BT	2.90
3/4	3178-007BT	3.67
1	3178-010BT	5.12
1 1/4	3178-012BT	6.50
1 1/2	3178-015BT	8.72
2	3178-020BT	12.23

Industrial Range

Code	Price
01 153 102	3.34
01 153 103	4.28
01 153 104	6.07
01 153 105	7.63
01 153 106	10.32
01 153 107	14.38

Adaptor

Plain Socket
x BSP Male Thread



Standard Range

Size	Code	Price
3/8	-	
1/2	3136-005BT	2.52
3/4	3136-007BT	3.34
1	3136-010BT	4.58
1 1/4	3136-012BT	6.37
1 1/2	3136-015BT	8.28
2	3136-020BT	11.88
3	3136-030BT	34.18
4	3136-040BT	45.89

Industrial Range

Code	Price
01 151 101	2.34
01 151 102	3.19
01 151 103	3.34
01 151 104	5.23
01 151 105	7.40
01 151 106	9.76
01 151 107	13.92
-	
-	

Hexagon Nipple

Plain Spigot
x BSP Male Thread



Standard Range

Size	Code	Price
3/8	-	
1/2	-	
3/4	-	
1	-	
1 1/4	-	
1 1/2	-	
2	-	

Industrial Range

Code	Price
01 107 101	2.75
01 107 102	2.95
01 107 103	3.96
01 107 104	5.45
01 107 105	6.91
01 107 106	7.85
01 107 107	9.89

Barrel Nipple

Plain Spigot
x BSP Male Thread



Standard Range

Size	Code	Price
3/8	3181-1-020BT	2.90
1/2	3182-1-020BT	3.15
3/4	3183-1-020BT	3.97
1	3184-1-030BT	5.12
1 1/4	3185-1-035BT	7.02
1 1/2	3186-1-035BT	7.65
2	3187-1-040BT	9.89
2 1/2	3188-1-050BT	23.13
3	3189-1-050BT	26.08
4	3190-1-060BT	34.75

Industrial Range

Code	Price
-	
-	
-	
-	
-	
-	
-	
-	
01 316 109	30.71
01 316 110	40.91

Tank Connector

Plain Spigot
x BSP Male Thread



Standard Range

Size	Code	Price
1/2	3143-005	5.47
3/4	3143-007	6.03
1	3143-010	13.06
1 1/4	3143-012	33.09
1 1/2	3143-015	36.45
2	3143-020	43.55
2 1/2	3143-025	57.14
3	3143-030	65.32
4	3143-040	98.00
6	3143-060	264.48

Industrial Range

Code	Price
01 235 102	6.41
01 235 103	7.04
-	
-	
-	
-	
-	
-	
-	
-	
-	

Hose Adaptor

Hose Tail
x BSP Male Thread



Standard Range

Size	Code	Price
1/2	-	
3/4	-	
1	-	

Industrial Range

Code	Price
01 157 102	4.64
01 157 103	6.07
01 157 104	7.04

threaded fittings inch sizes

Elbow 90°

BSP Female Thread



Standard Range

Size	Code	Price
1/2	-	
3/4	-	
1	-	
1 1/2	-	
2	-	

Industrial Range

Code	Price
01 117 102	6.77
01 117 103	6.91
01 117 104	8.92
01 117 106	17.85
01 117 107	26.89

Socket

BSP Female Thread



Standard Range

Size	Code	Price
1/2	-	
3/4	-	
1	-	
1 1/4	-	
1 1/2	-	
2	-	
3	-	

Industrial Range

Code	Price
01 102 102	6.41
01 102 103	7.14
01 102 104	8.93
01 102 105	12.22
01 102 106	13.77
01 102 107	17.29
01 102 109	47.60

Reducing Bush

BSP Male Thread
x BSP Female Thread



Standard Range

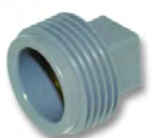
Size	Code	Price
1/2x3/8	-	
3/4x1/2	-	
1x3/4	-	

Industrial Range

Code	Price
01 113 121	3.96
01 113 122	4.51
01 113 124	5.82

Plug

BSP Male Thread



Standard Range

Size	Code	Price
3/8	-	
1/2	-	
3/4	-	
1	-	
1 1/4	-	
1 1/2	-	
2	-	

Industrial Range

Code	Price
01 155 101	3.12
01 155 102	3.96
01 155 103	4.88
01 155 104	5.82
01 155 105	7.71
01 155 106	9.76
01 155 107	10.95

Cap

BSP Female Thread



Standard Range

Size	Code	Price
3/8	-	
1/2	-	
3/4	-	
1	-	
1 1/4	-	
1 1/2	-	
2	-	
3	-	

Industrial Range

Code	Price
01 141 101	5.37
01 141 102	6.91
01 141 103	7.85
01 141 104	8.47
01 141 105	9.07
01 141 106	11.64
01 141 107	14.76
01 141 109	50.92

Hexagon Nipple

BSP Male Thread



Standard Range

Size	Code	Price
3/8	-	
1/2	-	
3/4	-	
1	-	
1 1/4	-	
1 1/2	-	
2	-	

Industrial Range

Code	Price
01 106 101	3.12
01 106 102	3.46
01 106 103	4.51
01 106 104	5.82
01 106 105	8.09
01 106 106	9.50
01 106 107	11.52

Barrel Nipple

BSP Male Thread



Standard Range

Size	Code	Price
3/8	3181-020BT	3.40
1/2	3182-020BT	3.52
3/4	3183-020BT	4.14
1	3184-030BT	5.47
1 1/4	3185-035BT	7.12
1 1/2	3186-035BT	7.72
2	3187-040BT	9.89
2 1/2	3188-050BT	22.41
3	3189-050BT	26.08
4	3190-060BT	35.09

Industrial Range

Code	Price
-	
-	
-	
-	
-	
-	
-	
-	
-	

Back Nut

BSP Female Thread



Standard Range

Size	Code	Price
3/8	-	
1/2	3142-005BT	2.34
3/4	3142-007BT	2.52
1	3142-010BT	4.41
1 1/4	3142-012BT	9.54
1 1/2	3142-015BT	10.87
2	3142-020BT	11.43
2 1/2	3142-025BT	17.28
3	3142-030BT	19.52
4	3142-040BT	24.57

Industrial Range

Code	Price
01 159 101	2.34
01 159 102	2.75
01 159 103	2.95
01 159 104	5.23
01 159 105	11.19
01 159 106	12.73
01 159 107	13.44
-	
-	
-	

PTFE Tape

BS7786

Roll Size: 12m x 12m x 0.075mm

Order Code: 767-120

Price: 0.87

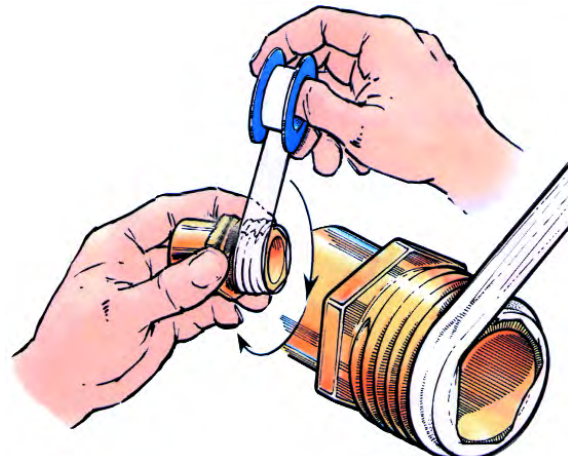


Making Threaded Joints

We recommend the use of PTFE tape or Blue 75 Joint Compound for all threaded joints on plastic piping. Please check with our technical department before using any other type of pipe joint compounds, as these can cause stress cracking and lead to failure of the system.

When using PTFE tape, follow the following guidelines:

- Always wrap tape clockwise
- Apply 2 to 3 wraps
- Tighten hand-tight plus 1 1/2 to 2 turns
- Do not overtighten



Pipe PN10

5 Metre Lengths

Size	Nominal Bore	Maximum Pressure (bar)	Weight/m (kg)	O.D. (mm)	Minimum Wall (mm)	Industrial Range	
						Code	Price/M
16	10	10	0.07	16	1.4	11 555 305	1.54
20	15	10	0.1	20	1.5	11 555 306	2.30
25	20	10	0.15	25	1.8	11 555 307	3.56
32	25	10	0.22	32	2.0	11 555 308	5.45
40	32	10	0.34	40	2.5	11 555 309	8.47
50	40	10	0.52	50	3.2	11 555 310	12.59
63	50	10	0.83	63	4.0	11 555 311	17.01
75	65	10	1.15	75	4.7	11 555 312	27.12
90	80	10	1.67	90	5.7	11 555 313	33.55
110	100	10	2.47	110	6.9	11 555 314	51.14
125	115	10	3.18	125	7.9	11 555 315	64.71
140	125	10	4.02	140	8.8	11 555 316	104.44
160	150	10	5.27	160	10	11 555 317	111.34
200	180	10	8.14	200	12.5	11 555 318	156.04
225	200	10	10.35	225	14.1	11 555 319	218.97
250	225	10	12.65	250	15.6	11 555 320	284.90
315	300	8	20.08	315	19.7	11 555 323	379.61

Please note that a transportation surcharge may be applied on pipe diameters 250mm or larger - please enquire for details

Temperature De-Rating Factors

Pressure ratings for ABS pipework systems are always quoted at 20°C. As working temperature increases, the maximum working pressure decreases by the factor indicated.

Working Temperature (°C)	Pressure De-rating Factor
20	1.00
30	0.85
40	0.72
50	0.58
60	0.45
70	0.28
80	0.05

Pipework Support

ABS pipework requires more support than for metallic systems. As working temperature increases, the distance between supports is reduced.

Pipe Size	Support Centres/m		
	20°C	50°C	70°C
16mm/ 3/8"	0.8	0.5	0.4
20mm/ 1/2"	0.9	0.6	0.5
25mm/ 3/4"	1.0	0.7	0.6
32mm/ 1"	1.1	0.8	0.7
40mm/ 1 1/4"	1.2	0.9	0.7
50mm/ 1 1/2"	1.3	1.0	0.7
63mm/ 2"	1.4	1.1	0.8
75mm/ 2 1/2"	1.5	1.2	0.8
90mm/ 3"	1.6	1.2	0.9
110mm/ 4"	1.8	1.3	1.0
125mm	1.9	1.4	1.0
140mm/ 5"	2.0	1.5	1.1
160mm/ 6"	2.1	1.6	1.2
200mm	2.2	1.7	1.3
225mm/ 8"	2.3	1.8	1.5
250mm	2.5	2.0	1.7
280mm/ 10"	2.7	2.2	1.9
315mm/ 12"	2.9	2.4	2.1



Durapipe One-Step Solvent Cement



Size	Code	Price
500ml tin	03 461 395	12.96
1 litre tin	03 461 396	23.24



Cleaning Fluid

Size	Code	Price
1/2 litre tin	765-300	10.79



Brushes

Size	Code	Price
8mm round	L151/8R	1.60
25 x 10mm flat	565/1	1.77
50 x 10mm flat	565/2	4.05
75 x 10mm flat	565/3	10.64



Durapipe One-Step Cement

Making secure ABS joints is fast and easy with this new cement:

- Cut pipe square
- Chamfer the pipe end
- Clean surfaces to be joined
- Apply cement to pipe, then to fitting
- Bring together

What size Brush?

It is important to use the correct size brush to apply solvent cement.

Inch Size	mm Size	Brush Size
1/4-1	16-32	8mm round
1 1/4-2	40-63	25 x 10mm flat
2 1/2-5	75-140	50 x 10mm flat
6-12	160-315	75 x 10mm flat

How much Solvent Cement?

Estimate the number of joints per size, then use this table to calculate how much solvent cement to order.

Inch Size	mm Size	Joints Per Litre
3/8-1	16-32	400
1 1/4-2	40-63	200
2 1/2-3	75-90	70
4	110-125	45
5-6	140-160	25
8	200-225	15
10-12	250-315	4

You will require approximately half as much cleaner.

plain fittings mm sizes



Tee 90°



Size	Code	Price
16	11 122 305	2.38
20	11 122 306	2.84
25	11 122 307	3.96
32	11 122 308	5.45
40	11 122 309	7.85
50	11 122 310	11.52
63	11 122 311	17.61
75	11 122 312	30.49
90	11 122 313	51.39
110	11 122 314	75.45
125	11 122 315	149.43
140	11 122 316	200.34
160	11 122 317	263.66
200	11 122 318	384.98
225	11 122 319	411.08
250	11 122 320	711.67
315	11 122 323	1066.41

Reducing Tee 90°



Size	Code	Price
25x20	11 124 415	4.28
32x20	11 124 418	5.94
32x25	11 124 419	7.14
40x20	11 124 421	8.72
40x25	11 124 422	9.76
50x20	11 124 424	12.59
50x25	11 124 425	12.59
50x32	11 124 426	12.59
63x25	11 124 429	19.49
63x32	11 124 430	19.49
75x32	11 124 435	41.63
75x40	11 124 436	41.63
75x50	11 124 437	41.63
75x63	11 124 438	41.63
90x40	11 124 441	58.83
90x50	11 124 442	58.83
90x63	11 124 443	58.83
90x75	11 124 444	58.83
110x50	11 124 448	93.96
110x63	11 124 449	93.96
110x75	11 124 450	93.96
110x90	11 124 451	93.96

Swept Tee 90°



Size	Code	Price
32	11 148 308	10.68
50	11 148 310	18.06
63	11 148 311	26.65
75	01 148 108	44.74
110	11 148 314	118.73

Tee 45°



Size	Code	Price
20	11 418 306	12.73
25	11 418 307	13.44
32	11 418 308	15.23
40	11 418 309	18.44
50	11 418 310	23.09
63	11 418 311	35.23



Pressure Ratings

All Durapipe metric ABS fittings are suitable for continuous use at pressures up to 10 bar at 20°C.

Pipe Availability

We typically hold over
120 miles of pipe
in stock for immediate despatch





Elbow 90°



Size	Code	Price
16	11 115 305	2.22
20	11 115 306	2.50
25	11 115 307	2.98
32	11 115 308	4.16
40	11 115 309	7.04
50	11 115 310	9.16
63	11 115 311	13.91
75	11 115 312	26.64
90	11 115 313	39.98
110	11 115 314	59.71
125	11 115 315	112.08
140	11 115 316	137.78
160	11 115 317	240.31
200	11 115 318	337.76
225	11 115 319	369.06
250	11 115 320	610.01
315	11 115 323	908.49

Elbow 45°



Size	Code	Price
16	11 119 305	4.17
20	11 119 306	4.79
25	11 119 307	4.88
32	11 119 308	6.07
40	11 119 309	8.92
50	11 119 310	11.06
63	11 119 311	15.36
75	11 119 312	24.27
90	11 119 313	36.16
110	11 119 314	74.95
125	11 119 315	113.94
140	11 119 316	127.30
160	11 119 317	155.36
200	11 119 318	273.76
225	11 119 319	355.74
250	11 119 320	450.45
315	11 119 323	826.31

Bend 90°



Size	Code	Price
20	11 118 306	9.64
25	11 118 307	11.43
32	11 118 308	15.69
40	11 118 309	22.73
50	11 118 310	28.31
63	11 118 311	37.37
75	11 118 312	74.24
90	11 118 313	95.42
110	11 118 314	158.02

Bend 90°

Long Radius



Size	Code	Price
125	11 309 315	232.24
140	11 309 316	422.35
160	11 309 317	444.96
200	11 309 318	754.05
225	11 309 319	1115.19

Other angles available on request

plain fittings mm sizes

Socket



Size	Code	Price
16	11 100 305	1.69
20	11 100 306	1.83
25	11 100 307	2.06
32	11 100 308	2.38
40	11 100 309	4.17
50	11 100 310	5.01
63	11 100 311	7.04
75	11 100 312	15.36
90	11 100 313	28.31
110	11 100 314	40.18
125	11 100 315	63.78
140	11 100 316	78.77
160	11 100 317	100.41
200	11 100 318	171.91
225	11 100 319	200.54
250	11 100 320	363.43
315	11 100 323	515.90

Reducing Socket



Size	Code	Price
25x20/16	11 114 412	1.69
32x25/20	11 114 415	2.37
40x32/25	11 114 419	2.75
50x40/32	11 114 423	3.96
63x50/40	11 114 427	5.82
75x63/50	11 114 432	15.60
90x75/63	11 114 438	20.58
110x90/75	11 114 444	26.44
125x110/90	11 114 451	39.23
140x125/110	11 114 459	69.44
160x140/125	11 114 467	94.71
200x160/140	11 114 476	144.44
225x200/160	11 114 487	204.63

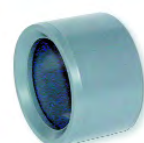
Adaptor Socket

Inch x mm



Size	Code	Price
1/2x20	11 345 102	2.50
3/4x25	11 345 103	2.82
1x32	11 345 104	3.43
1 1/4x40	11 345 105	4.64
1 1/2x50	11 345 106	6.77
2x63	11 345 107	15.36
3x90	11 345 109	28.08
4x110	11 345 110	45.43
6x160	11 345 112	105.40

Reducing Bush



Size	Code	Price
20x16	11 109 412	1.61
25x20	11 109 415	2.06
32x16	11 109 417	2.62
32x25	11 109 419	2.62
40x32	11 109 423	3.46
50x20	11 109 424	4.51
50x25	11 109 425	4.51
50x32	11 109 426	4.51
50x40	11 109 427	4.51
63x25	11 109 429	5.82
63x32	11 109 430	5.82
63x50	11 109 432	5.82
75x63	11 109 438	10.68
90x50	11 109 442	16.79
90x63	11 109 443	16.79
90x75	11 109 444	18.32
110x63	11 109 449	23.09
110x90	11 109 451	23.09
125x110	11 109 459	40.70
140x125	11 109 467	64.50
160x90	11 109 473	70.68
160x110	11 109 474	70.68
160x140	11 109 476	87.34
200x160	11 109 487	102.21
225x160	11 109 495	146.27
225x200	11 109 496	146.27
250x225	11 109 499	387.20
315x250	11 109 503	444.50

Union

EPDM O-Ring



Size	Code	Price
16	11 205 305	8.21
20	11 205 306	9.89
25	11 205 307	10.68
32	11 205 308	14.38
40	11 205 309	17.61
50	11 205 310	24.27
63	11 205 311	31.65
75	11 205 312	76.59
90	11 205 313	117.31
110	11 205 314	151.07

Cap

Union

FPM O-Ring



Size	Code	Price
16	11 204 305	8.71
20	11 204 306	10.57
25	11 204 307	11.37
32	11 204 308	15.31
40	11 204 309	18.70
50	11 204 310	26.00
63	11 204 311	33.71
75	11 204 312	88.08
90	11 204 313	134.93
110	11 204 314	173.76



Size	Code	Price
16	11 149 305	1.61
20	11 149 306	1.93
25	11 149 307	2.21
32	11 149 308	2.62
40	11 149 309	4.17
50	11 149 310	6.77
63	11 149 311	8.33
75	11 149 312	19.75
90	11 149 313	25.21
110	11 149 314	38.54

Stub Flange

Serrated Face



Size	Code	Price
16	11 135 305	2.02
20	11 135 306	2.16
25	11 135 307	2.33
32	11 135 308	3.02
40	11 135 309	4.79
50	11 135 310	7.85
63	11 135 311	11.52
75	11 135 312	18.32
90	11 135 313	22.58
110	11 135 314	29.28
125	11 135 315	58.09
140	11 135 316	67.08
160	11 135 317	75.92
200	11 135 318	77.91
225	11 135 319	151.72
250	11 135 320	262.42
315	11 135 323	308.46

Blind Flange

Drilled BS4504 PN10/16



Size	Code	Price
32	11 323 308	27.85
40	11 323 309	30.23
50	11 323 310	31.65
63	11 323 311	35.68
75	11 323 312	50.24
90	11 323 313	62.13
110	11 323 314	81.39
125	11 323 315	111.83
140	11 323 316	121.35
160	11 323 317	155.61

Stub Gasket

EPDM



Size	Code	Price
16	861-_-003	0.50
20	861-_-005	0.50
25	861-_-007	0.58
32	861-_-010	0.64
40	861-_-012	0.80
50	861-_-015	0.96
63	861-_-020	1.65
75	861-_-025	2.02
90	861-_-030	2.17
110	861-_-040	3.16
125	861-_-125	4.07
140	861-_-051	4.07
160	861-_-061	4.66
200	861-_-082	9.25
225	861-_-081	9.25
250	861-_-101	11.34
315	861-_-120	12.86

Complete code when ordering
Insert 'ISO' for NP10/16; 'A' for ANSI
150; 'E' for Table D/E

Stub Gasket

FPM



Size	Code	Price
16	862-_-003	2.34
20	862-_-005	2.34
25	862-_-007	3.48
32	862-_-010	4.59
40	862-_-012	7.36
50	862-_-015	8.05
63	862-_-020	10.60
75	862-_-025	15.34
90	862-_-030	20.01
110	862-_-040	34.14
125	862-_-125	36.07
140	862-_-051	56.98
160	862-_-061	56.98
200	862-_-082	68.24
225	862-_-081	68.24
250	862-_-101	92.89
315	862-_-120	96.97

Complete code when ordering
Insert 'ISO' for NP10/16; 'A' for ANSI
150; 'E' for Table D/E

Gasket

EPDM - full face



Size	Code	Price
16	863-_-003	1.74
20	863-_-005	1.74
25	863-_-007	1.96
32	863-_-010	2.34
40	863-_-012	2.79
50	863-_-015	3.31
63	863-_-020	4.07
75	863-_-025	4.66
90	863-_-030	5.71
110	863-_-040	7.98
125	863-_-125	8.19
140	863-_-051	8.19
160	863-_-061	12.86
200	863-_-082	15.19
225	863-_-081	15.19
250	863-_-101	24.57
315	863-_-120	35.47

Complete code when ordering
Insert 'ISO' for NP10/16; 'A' for ANSI
150; 'E' for Table D/E

Gasket

FPM - full face



Size	Code	Price
16	864-_-003	13.82
20	864-_-005	13.82
25	864-_-007	15.93
32	864-_-010	19.84
40	864-_-012	21.81
50	864-_-015	25.84
63	864-_-020	33.22
75	864-_-025	40.68
90	864-_-030	47.05
110	864-_-040	64.34
125	864-_-125	96.11
140	864-_-051	96.11
160	864-_-061	104.63
200	864-_-082	113.96
225	864-_-081	113.96
250	864-_-101	137.57
315	864-_-120	178.13

Complete code when ordering
Insert 'ISO' for NP10/16; 'A' for ANSI
150; 'E' for Table D/E



Flange Pressure Ratings

Not all ABS flanges carry the same pressure rating as the pipe.

This is the maximum working pressure of the flange at 20°C:-

BS 10 Table D: 100 psi (6.9 bar)

BS 10 Table E: 200 psi (13.8 bar)

BS 4504 PN10: 10 bar

BS 4504 PN16: 16 bar

ANSI 150: 10 bar

Take care to select the correct flange for the job.



Backing Ring NP10/16

Galvanised Mild Steel

Size	Code	Price
16	860-003-12NP	6.47
20	860-005-12NP	6.47
25	860-007-12NP	6.85
32	860-010-12NP	8.13
40	860-012-12NP	8.64
50	860-015-12NP	9.48
63	860-020-11NP	13.39
75	860-025-11NP	18.33
90	860-030-11NP	21.20
110	860-040-11NP	27.11
125	860-125-12NP	37.75
140	860-050-11NP	37.75
160	860-060-13NP	43.04
200*	860-080-14N	60.52
225*	860-225-12N	59.39
250*	860-100-14N	84.04
315*	860-120-14N	114.24

*NP10 only



Valve Support Plate

Galvanised Mild Steel- Drilled
NP10/16

Size	Code	Price
16	31 459 305	17.23
20	31 459 306	18.67
25	31 459 307	19.46
32	31 459 308	21.04
50	31 459 310	29.16
63	31 459 311	33.16
75	31 459 312	36.01
90	31 459 313	44.73
110	31 459 314	52.91



Backing Ring ANSI 150

Galvanised Mild Steel

Size	Code	Price
20	860-005-12A	6.47
25	860-007-12A	6.85
32	860-010-12A	8.13
40	860-012-12A	8.64
50	860-015-12A	9.48
63	860-020-11A	13.39
75	860-025-11A	18.33
90	860-030-11A	21.20
110	860-040-11A	27.11

Will it be in stock?

Last year we shipped more than **25,000** consignments, and more than

95%

were complete, first time!



Union

Plain Socket x Brass BSP Female Thread



Size	Code	Price
16x ³ / ₈	11 216 305	12.00
20x ¹ / ₂	11 216 306	14.38
25x ³ / ₄	11 216 307	21.07
32x1	11 216 308	24.27
40x1 ¹ / ₄	11 216 309	33.55
50x1 ¹ / ₂	11 216 310	46.35
63x2	11 216 311	69.97

Union

Plain Socket x Brass BSP Male Thread



Size	Code	Price
16x ³ / ₈	11 217 305	12.36
20x ¹ / ₂	11 217 306	14.63
25x ³ / ₄	11 217 307	21.17
32x1	11 217 308	24.27
40x1 ¹ / ₄	11 217 309	34.51
50x1 ¹ / ₂	11 217 310	46.87
63x2	11 217 311	73.03

PTFE Tape

BS7786

Roll Size: 12m x 12m x 0.075mm
Order Code: 767-120
Price: 0.87



Adaptor

Plain Spigot/Socket x BSP Male Thread



Size	Code	Price
16/12x ³ / ₈	11 151 331	2.28
20/16x ³ / ₈	11 151 332	3.12
20/16x ¹ / ₂	11 151 333	3.12
25/20x ¹ / ₂	11 151 334	3.34
25/20x ³ / ₄	11 151 335	3.34
32/25x ¹ / ₂	11 151 352	4.65
32/25x ³ / ₄	11 151 336	5.01
32/25x1	11 151 337	5.01
40/32x1	11 151 338	7.14
40/32x1 ¹ / ₄	11 151 339	7.14
50/40x1 ¹ / ₄	11 151 340	9.64
50/40x1 ¹ / ₂	11 151 341	9.64
63/50x1 ¹ / ₂	11 151 342	13.32
63/50x2	11 151 343	13.32
75/63x2	11 151 345	22.15

Adaptor

Plain Spigot/Socket x BSP Female Thread



Size	Code	Price
16/12x ³ / ₈	11 153 331	4.51
20/16x ¹ / ₂	11 153 333	5.37
25/20x ³ / ₄	11 153 335	6.41
32/25x1	11 153 337	7.71
40/32x1 ¹ / ₄	11 153 339	9.64
50/40x1 ¹ / ₂	11 153 341	12.85
63/50x2	11 153 343	15.69

Hose Adaptor

Size	Code	Price
16	11 158 305	1.93
20	11 158 306	2.75
25	11 158 307	2.95
32	11 158 308	3.34

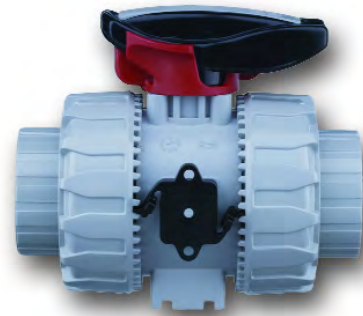
Fast Delivery

We deliver using our own dedicated vehicles or next day carrier. Using our standard delivery service you can expect to receive your order within 24 hours - to your warehouse, factory or job-site



Durapipe VKD Double Union Ball Valve

Description: In-line double union ball valve
Mounting: In any position
Maximum Fluid Pressure at 20°C: 16 bar
Fluid Temperature Range: -40°C to 70°C
Construction:
Body: ABS
Seals: EPDM or FPM
Seats: PTFE
End Connections: Solvent Sockets, BSP Female Threaded
Option: Electric or Pneumatic Actuation



Inch Solvent Cement Sockets

EPDM Seals	Size	Code	Price
	3/8	HO DKA 101	53.46
PTFE Seats	1/2	HO DKA 102	55.60
	3/4	HO DKA 103	66.09
	1	HO DKA 104	78.86
	1 1/4	HO DKA 105	101.12
	1 1/2	HO DKA 106	130.28
	2	HO DKA 107	165.76
	2 1/2	HO DKA 312	347.98
	3	HO DKA 109	441.35
	4	HO DKA 110	611.11

Inch Solvent Cement Sockets

FPM Seals	Size	Code	Price
	3/8	HO DKB 101	66.09
PTFE Seats	1/2	HO DKB 102	67.55
	3/4	HO DKB 103	78.45
	1	HO DKB 104	98.38
	1 1/4	HO DKB 105	119.34
	1 1/2	HO DKB 106	157.58
	2	HO DKB 107	212.72
	2 1/2	HO DKB 312	466.81
	3	HO DKB 109	560.16
	4	HO DKB 110	721.45

MM Solvent Cement Sockets

EPDM Seals	Size	Code	Price
	16	HO DKA 305	53.46
PTFE Seats	20	HO DKA 306	55.60
	25	HO DKA 307	66.09
	32	HO DKA 308	78.86
	40	HO DKA 309	101.12
	50	HO DKA 310	130.28
	63	HO DKA 311	165.76
	75	HO DKA 312	347.98
	90	HO DKA 313	441.35
	110	HO DKA 314	611.11

MM Solvent Cement Sockets

FPM Seals	Size	Code	Price
	16	HO DKB 305	66.09
PTFE Seats	20	HO DKB 306	67.55
	25	HO DKB 307	78.45
	32	HO DKB 308	98.38
	40	HO DKB 309	119.34
	50	HO DKB 310	157.58
	63	HO DKB 311	212.72
	75	HO DKB 312	466.81
	90	HO DKB 313	560.16
	110	HO DKB 314	721.45

BSP Female Threaded

EPDM Seals	Size	Code	Price
	1/2	HO DKA B02	65.66
PTFE Seats	3/4	HO DKA B03	78.03
	1	HO DKA B04	95.03
	1 1/4	HO DKA B05	122.09
	1 1/2	HO DKA B06	159.23
	2	HO DKA B07	204.53

BSP Female Threaded

FPM Seals	Size	Code	Price
	1/2	HO DKB B02	78.86
PTFE Seats	3/4	HO DKB B03	93.58
	1	HO DKB B04	118.76
	1 1/4	HO DKB B05	144.54
	1 1/2	HO DKB B06	186.30
	2	HO DKB B07	255.55

Double Union Ball Valve

Description: In-line double union ball valve
Mounting: In any position
Maximum Fluid Pressure at 20°C: 3/8"/16mm to 2"/63mm - 16 bar,
 Sizes 2 1/2"/75mm to 4"/110mm - 10 bar
Fluid Temperature Range: 0°C - 60°C
Construction:
Body: ABS
Seals: EPDM or FPM
Seats: PTFE
End Connections: Solvent Sockets
Option: Electric or Pneumatic Actuation (prices on request)



Inch Solvent Cement Sockets

EPDM Seals	Size	Code	Price
	1/2	3146-005	35.49
PTFE Seats	3/4	3146-007	41.79
	1	3146-010	51.02
	1 1/4	3146-012	65.56
	1 1/2	3146-015	83.95
	2	3146-020	105.00
	2 1/2	3146-025	262.44
	3	3146-030	341.43
	4	3146-040	474.57

Inch Solvent Cement Sockets

FPM Seals	Size	Code	Price
	1/2	3146-005F	42.60
PTFE Seats	3/4	3146-007F	50.19
	1	3146-010F	61.33
	1 1/4	3146-012F	78.67
	1 1/2	3146-015F	100.88
	2	3146-020F	126.04
	2 1/2	3146-025F	302.14
	3	3146-030F	409.68
	4	3146-040F	545.96

Durapipe TKD L-Port Ball Valve

Description: In-line horizontal L-port 3-way ball valve

Mounting: In any position

Maximum Fluid Pressure at 20°C: 16 bar

Fluid Temperature Range: -40°C to 70°C

Construction:

Body: ABS

Seals: EPDM

Seats: PTFE

End Connections: Solvent Sockets, BSP Female Threaded



Inch Solvent Cement Sockets

EPDM Seals	1/2	HO LTA 102	109.84
	3/4	HO LTA 103	122.85
PTFE Seats	1	HO LTA 104	144.94
	1 1/4	HO LTA 105	175.75
	1 1/2	HO LTA 106	190.59
	2	HO LTA 107	245.66

Durapipe TKD T-Port Ball Valve

Description: In-line horizontal T-port 3-way ball valve

Mounting: In any position

Maximum Fluid Pressure at 20°C: 16 bar

Fluid Temperature Range: -40°C to 70°C

Construction:

Body: ABS

Seals: EPDM

Seats: PTFE

End Connections: Solvent Sockets, BSP Female Threaded



Inch Solvent Cement Sockets

EPDM Seals	1/2	HO TTA 102	109.84
	3/4	HO TTA 103	122.85
PTFE Seats	1	HO TTA 104	144.94
	1 1/4	HO TTA 105	175.75
	1 1/2	HO TTA 106	190.59
	2	HO TTA 107	245.61



Operation of Multi-Port Valves

	Position 1 90°	Position 2 180°	Position 3 180°	Operation
L				Diverting and isolating
T				Diverting or mixing
C				Diverting and mixing (has transflow position 10° to 80°)

◀ = Flow

Durapipe FK Lugged Butterfly Valve

Description: Wafer style butterfly valve for end of line applications

Mounting: In any position, connected to flange, drilled to BS4504 PN10 or ANSI 150

Maximum Fluid Pressure at 20°C: 10 bar

Fluid Temperature Range: -40°C to 70°C

Construction:

Body: Glass reinforced polypropylene

Disc: ABS

Seals: EPDM, FPM or NBR

Lugged inserts: Stainless Steel

End Connections: Flange mounted (flanges not included)

Options: Lever or gear operation



Lever Operated

BS4504 PN10				
EPDM Seals	2 1/2/75	HO FKA F08	300.55	
	3/90	HO FKA F09	348.91	
	4/110	HO FKA F10	429.46	
	5/140	HO FKA F11	545.74	
	6/160	HO FKA F12	663.13	
	8/225	HO FKA F13	741.59	

Lever Operated

BS4504 PN10				
FPM Seals	2 1/2/75	HO FKB F08	406.83	
	3/90	HO FKB F09	468.91	
	4/110	HO FKB F10	592.01	
	5/140	HO FKB F11	754.37	
	6/160	HO FKB F12	916.54	
	8/225	HO FKB F13	1190.20	

Gear Operated

BS4504 PN10				
EPDM Seals	2 1/2/75	HV FKA F08	547.78	
	3/90	HV FKA F09	603.81	
	4/110	HV FKA F10	682.90	
	5/140	HV FKA F11	777.24	
	6/160	HV FKA F12	912.29	
	8/225	HV FKA F13	1156.36	

Gear Operated

BS4504 PN10				
FPM Seals	2 1/2/75	HV FKB F08	647.24	
	3/90	HV FKB F09	705.33	
	4/110	HV FKB F10	820.52	
	5/140	HV FKB F11	972.46	
	6/160	HV FKB F12	1124.21	
	8/225	HV FKB F13	1439.63	

Lever Operated

ANSI 150				
EPDM Seals	2 1/2/75	HO FKA X08	343.54	
	3/90	HO FKA X09	395.40	
	4/110	HO FKA X10	486.98	
	5/140	HO FKA X11	618.50	
	6/160	HO FKA X12	751.96	
	8/225	HO FKA X13	940.90	

Lever Operated

ANSI 150				
FPM Seals	2 1/2/75	HO FKB X08	449.82	
	3/90	HO FKB X09	515.38	
	4/110	HO FKB X10	649.53	
	5/140	HO FKB X11	827.12	
	6/160	HO FKB X12	1005.32	
	8/225	HO FKB X13	1307.38	

Gear Operated

ANSI 150				
EPDM Seals	2 1/2/75	HV FKA X08	588.02	
	3/90	HV FKA X09	649.46	
	4/110	HV FKA X10	739.35	
	5/140	HV FKA X11	845.31	
	6/160	HV FKA X12	999.49	
	8/225	HV FKA X13	1206.55	

Gear Operated

ANSI 150				
FPM Seals	2 1/2/75	HV FKB X08	687.48	
	3/90	HV FKB X09	748.82	
	4/110	HV FKB X10	874.34	
	5/140	HV FKB X11	1040.54	
	6/160	HV FKB X12	1207.29	
	8/225	HV FKB X13	1549.31	



Lugged Butterfly Valve

The FK lugged valve is assembled with threaded stainless steel inserts in the body to enable safe end-of-line use.

Durapipe FK Butterfly Valve

Description: Wafer style butterfly valve
Mounting: In any position, between flanges to BS4504 PN10; BS10 table D/E or ANSI 150
Maximum Fluid Pressure at 20°C: 10 bar
Fluid Temperature Range: -40°C to 70°C
Construction:
Body: Glass reinforced polypropylene
Disc: ABS
Seals: EPDM, FPM or NBR
End Connections: Flange mounted (flanges not included)
Options: Lever or gear operation



Lever Operated

EPDM Seals

1 1/2/50	HO FKA 106	166.61
2/63	HO FKA 107	175.75
2 1/2/75	HO FKA 108	193.01
3/90	HO FKA 109	212.70
4/110	HO FKA 110	257.63
5/140	HO FKA 111	333.56
6/160	HO FKA 112	410.15
8/225	HO FKA 113	610.47

Lever Operated

FPM Seals

1 1/2/50	HO FKB 106	201.46
2/63	HO FKB 107	213.49
2 1/2/75	HO FKB 108	237.08
3/90	HO FKB 109	248.60
4/110	HO FKB 110	296.87
5/140	HO FKB 111	373.42
6/160	HO FKB 112	458.39
8/225	HO FKB 113	669.24

Gear Operated

EPDM Seals

2 1/2/75	HV FKA 108	467.40
3/90	HV FKA 109	487.10
4/110	HV FKA 110	532.00
5/140	HV FKA 111	607.93
6/160	HV FKA 112	684.54
8/225	HV FKA 113	946.16
10/250	HV FKA 114	1631.89
12/315	HV FKA 115	1760.34

Gear Operated

FPM Seals

2 1/2/75	HV FKB 108	494.02
3/90	HV FKB 109	505.36
4/110	HV FKB 110	552.73
5/140	HV FKB 111	627.88
6/160	HV FKB 112	711.30
8/225	HV FKB 113	976.61
10/250	HV FKB 114	2656.34
12/315	HV FKB 115	2875.99

Don't see what you want?

We have access to a huge range of products that are not featured in our Handbook.

If you don't see what you want, give our team a call.



Durapipe RV Y-Type Strainer

Description: In-line sediment strainer
Mounting: In any position
Maximum Fluid Pressure at 20°C: 16 bar
Fluid Temperature Range: -40°C to 70°C
Construction:
Body: ABS
Seals: EPDM or FPM
Strainer: Polypropylene 0.5mm mesh (optional stainless steel)
End Connections: Solvent socket unions, BSP Female Threaded



Inch Solvent Cement Unions

EPDM Seals			
	1/2	HO UVA 102	47.38
	3/4	HO UVA 103	52.53
	1	HO UVA 104	70.02
	1 1/4	HO UVA 105	86.64
	1 1/2	HO UVA 106	116.07
	2	HO UVA 107	146.80

Inch Solvent Cement Unions

FPM Seals			
	1/2	HO UVB 102	56.34
	3/4	HO UVB 103	62.42
	1	HO UVB 104	80.58
	1 1/4	HO UVB 105	98.10
	1 1/2	HO UVB 106	141.20
	2	HO UVB 107	181.82

MM Solvent Cement Unions

EPDM Seals			
	20	HO UVA 306	47.37
	25	HO UVA 307	52.53
	32	HO UVA 308	70.02
	40	HO UVA 309	86.64
	50	HO UVA 310	116.07
	63	HO UVA 311	146.80

MM Solvent Cement Unions

FPM Seals			
	20	HO UVB 306	56.34
	25	HO UVB 307	62.42
	32	HO UVB 308	80.58
	40	HO UVB 309	98.10
	50	HO UVB 310	141.20
	63	HO UVB 311	181.81

BSP Female Threaded

EPDM Seals			
	1/2	HO UVA B02	57.44
	3/4	HO UVA B03	64.46
	1	HO UVA B04	86.20
	1 1/4	HO UVA B05	111.99
	1 1/2	HO UVA B06	144.99
	2	HO UVA B07	186.63

BSP Female Threaded

FPM Seals			
	1/2	HO UVB B02	64.95
	3/4	HO UVB B03	74.37
	1	HO UVB B04	96.74
	1 1/4	HO UVB B05	119.06
	1 1/2	HO UVB B06	170.15
	2	HO UVB B07	221.63

Stainless Steel Strainer *

1/2	
3/4	
1	on application
1 1/4	
1 1/2	
2	

* Additional charge

Durapipe VM Diaphragm Valve

Description: In-line diaphragm valve with position indicator

Mounting: In any position

Maximum Fluid Pressure at 20°C: 10 bar

Fluid Temperature Range: -40°C to 70°C

Construction:

Body: ABS

Diaphragm: EPDM, FPM or PTFE

End Connections: Solvent Spigots



Inch Solvent Cement Spigots

EPDM Diaphragm

1/2	HO UMA 102	100.86
3/4	HO UMA 103	114.59
1	HO UMA 104	143.17
1 1/4	HO UMA 105	171.49
1 1/2	HO UMA 106	233.70
2	HO UMA 107	284.88
2 1/2	HO VMA 208	430.99
3	HO VMA 209	650.99
4	HO VMA 210	1571.30

MM Solvent Cement Spigots

EPDM Diaphragm

20	HO UMA 306	100.86
25	HO UMA 307	114.59
32	HO UMA 308	151.06
40	HO UMA 309	179.98
50	HO UMA 310	233.70
63	HO UMA 311	284.88
75	HO VMA 412	430.99
90	HO VMA 413	650.99
110	HO VMA 414	1571.30

Inch Solvent Cement Spigots

FPM Diaphragm

1/2	HO UMB 102	103.93
3/4	HO UMB 103	122.35
1	HO UMB 104	146.58
1 1/4	HO UMB 105	179.32
1 1/2	HO UMB 106	235.69
2	HO UMB 107	291.13
2 1/2	HO VMB 208	527.52
3	HO VMB 209	769.94
4	HO VMB 210	1865.36

MM Solvent Cement Spigots

FPM Diaphragm

20	HO VMB 406	103.93
25	HO VMB 407	122.35
32	HO VMB 408	146.58
40	HO VMB 409	179.32
50	HO VMB 410	235.69
63	HO VMB 411	291.13
75	HO VMB 412	527.52
90	HO VMB 413	769.94
110	HO VMB 414	1865.36

Inch Solvent Cement Spigots

PTFE Diaphragm

1/2	HO VMC 202	160.28
3/4	HO VMC 203	178.69
1	HO VMC 204	225.85
1 1/4	HO VMC 205	273.40
1 1/2	HO VMC 206	356.90
2	HO VMC 207	414.67
2 1/2	HO VMC 208	736.27
3	HO VMC 209	1007.89
4	HO VMC 210	2440.00

MM Solvent Cement Spigots

PTFE Diaphragm

20	HO VMC 406	160.28
25	HO VMC 407	178.69
32	HO VMC 408	225.85
40	HO VMC 409	273.40
50	HO VMC 410	356.90
63	HO VMC 411	414.67
75	HO VMC 412	736.27
90	HO VMC 413	1007.89
110	HO VMC 414	2440.00

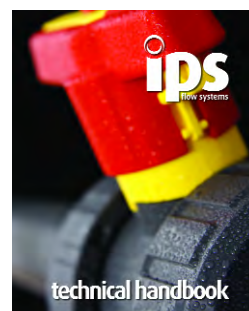
Technical Resources

Register online for our technical catalogue

www.ipsflowsystems.com

Or call our technical team on:

0800 975 79 71



Durapipe UA Double Union Air Release Valve

Description: In-line air release valve
Mounting: In a vertical position
Maximum Fluid Pressure at 20°C: 16 bar
Fluid Temperature Range: -40°C to 70°C
Construction:
Body: ABS
Seals: EPDM or FPM
End Connections: Solvent Sockets, BSP Female Threaded



Inch Solvent Cement Sockets

EPDM Seals

1/2	HO UAA 102	78.12
3/4	HO UAA 103	90.27
1	HO UAA 104	111.07
1 1/4	HO UAA 105	120.18
1 1/2	HO UAA 106	161.42
2	HO UAA 107	218.44

Inch Solvent Cement Sockets

FPM Seals

1/2	HO UAB 102	95.84
3/4	HO UAB 103	105.08
1	HO UAB 104	127.67
1 1/4	HO UAB 105	156.80
1 1/2	HO UAB 106	206.08
2	HO UAB 107	247.59

MM Solvent Cement Sockets

EPDM Seals

20	HO UAA 306	78.12
25	HO UAA 307	90.27
32	HO UAA 308	111.07
40	HO UAA 309	120.18
50	HO UAA 310	161.42
63	HO UAA 311	218.44

MM Solvent Cement Sockets

FPM Seals

20	HO UAB 306	95.84
25	HO UAB 307	105.08
32	HO UAB 308	127.67
40	HO UAB 309	156.80
50	HO UAB 310	206.08
63	HO UAB 311	247.59

BSP Female Threaded

EPDM Seals

1/2	HO UAA B02	91.05
3/4	HO UAA B03	104.60
1	HO UAA B04	128.26
1 1/4	HO UAA B05	142.95
1 1/2	HO UAA B06	187.45
2	HO UAA B07	255.91

BSP Female Threaded

FPM Seals

1/2	HO UAB B02	108.75
3/4	HO UAB B03	119.39
1	HO UAB B04	144.86
1 1/4	HO UAB B05	179.57
1 1/2	HO UAB B06	232.10
2	HO UAB B07	285.07

Durapipe PR Pressure Relief Valve

Description: Adjustable in-line pressure relief valve
Mounting: In any position
Maximum Fluid Pressure at 20°C: 10 bar
Fluid Temperature Range: -40°C to 70°C
Construction:
Body: ABS
Bonnet: Glass reinforced polypropylene
Diaphragm: EPDM
End Connections: Solvent Spigots



Setting Range - 0.5 to 7 bar

Inch Solvent Cement Spigots

1/2	HO PRA 102	401.83
3/4	HO PRA 103	433.25
1	HO PRA 104	469.16
1 1/4	HO PRA 105	549.96
1 1/2	HO PRA 106	638.59
2	HO PRA 107	729.53

MM Solvent Cement Spigots

20	HO PRA 406	400.67
25	HO PRA 407	433.25
32	HO PRA 408	469.16
40	HO PRA 409	550.41
50	HO PRA 410	638.84
63	HO PRA 411	730.64

Durapipe UC Double Union Ball Check Valve

Description: In-line double union ball check valve

Mounting: In a vertical position

Maximum Fluid Pressure at 20°C: 16 bar

Fluid Temperature Range: -40°C to 70°C

Construction:

Body: ABS

Seals: EPDM or FPM

End Connections: Solvent Sockets, BSP Female Threaded



Inch Solvent Cement Sockets

EPDM Seals

1/2	HO UCA 102	66.68
3/4	HO UCA 103	80.58
1	HO UCA 104	85.10
1 1/4	HO UCA 105	120.54
1 1/2	HO UCA 106	137.17
2	HO UCA 107	188.56

Inch Solvent Cement Sockets

FPM Seals

1/2	HO UCB 102	84.40
3/4	HO UCB 103	95.39
1	HO UCB 104	101.67
1 1/4	HO UCB 105	157.15
1 1/2	HO UCB 106	181.82
2	HO UCB 107	199.75

MM Solvent Cement Sockets

EPDM Seals

20	HO UCA 306	66.68
25	HO UCA 307	80.58
32	HO UCA 308	85.10
40	HO UCA 309	120.54
50	HO UCA 310	137.17
63	HO UCA 311	188.56

MM Solvent Cement Sockets

FPM Seals

20	HO UCB 306	84.40
25	HO UCB 307	95.39
32	HO UCB 308	101.67
40	HO UCB 309	157.15
50	HO UCB 310	181.82
63	HO UCB 311	199.75

BSP Female Threaded

EPDM Seals

1/2	HO UCA B02	79.58
3/4	HO UCA B03	94.92
1	HO UCA B04	102.27
1 1/4	HO UCA B05	143.31
1 1/2	HO UCA B06	163.21
2	HO UCA B07	226.04

BSP Female Threaded

FPM Seals

1/2	HO UCB B02	97.30
3/4	HO UCB B03	109.71
1	HO UCB B04	119.47
1 1/4	HO UCB B05	179.93
1 1/2	HO UCB B06	207.87
2	HO UCB B07	255.20

Durapipe VKD Electrically Actuated Ball Valve

Description: In-line ball valve with electric operation
Mounting: In any position
Maximum Fluid Pressure at 20°C: 16 bar (2"/63mm and 4"/110mm: 10 bar)
Fluid Temperature Range: -40°C to 70°C
Construction:
Body: ABS
Seals: EPDM or FPM
Seats: PTFE
End Connections: Solvent Sockets, BSP Female Threaded
Actuation:
Housing Material: ABS cover, glass filled nylon housing
Voltages: 240v / 110v AC (Auto Sensing); 24v AC / 24v DC (Auto Sensing)
Frequency Range: 50/60 Hz
Protection: IP65
Ambient Temperature Range: -10°C to 55°C
Manual Override: Included
Position Indicator: Included
Contacts: Open, closed
Features: Industrial grade valve for long term, maintenance-free life
Options: 10W anti-condensation heater; 4.7Kohmms potentiometer; 4 to 20ma or 0 to 10v proportional control; fail safe battery back-up



Inch Solvent Cement Sockets

240v / 110v AC		With Manual Override		
EPDM Seats	3/8	H1 DKA 101	442.60	
	1/2	H1 DKA 102	444.74	
PTFE Seats	3/4	H1 DKA 103	455.23	
	1	H1 DKA 104	468.01	
	1 1/4	H1 DKA 105	490.26	
	1 1/2	H1 DKA 106	519.42	
	2	H1 DKA 107	554.86	
	2 1/2	H1 DKA 312	868.14	
	3	H1 DKA 109	961.52	
	4	H1 DKA 110	1131.28	

Inch Solvent Cement Sockets

240v / 110v AC		With Manual Override		
FPM Seats	3/8	H1 DKB 101	461.43	
	1/2	H1 DKB 102	462.85	
PTFE Seats	3/4	H1 DKB 103	473.56	
	1	H1 DKB 104	493.13	
	1 1/4	H1 DKB 105	513.71	
	1 1/2	H1 DKB 106	551.23	
	2	H1 DKB 107	605.38	
	2 1/2	H1 DKB 312	988.32	
	3	H1 DKB 109	1088.85	
	4	H1 DKB 110	1238.28	

MM Solvent Cement Sockets

240v / 110v		With Manual Override		
EPDM Seats	16	H1 DKA 305	454.51	
	20	H1 DKA 306	444.74	
PTFE Seats	25	H1 DKA 307	461.43	
	32	H1 DKA 308	468.01	
	40	H1 DKA 309	495.82	
	50	H1 DKA 310	519.42	
	63	H1 DKA 311	554.86	
	75	H1 DKA 312	868.14	
	90	H1 DKA 313	963.33	
	110	H1 DKA 314	1129.97	

MM Solvent Cement Sockets

240v / 110v AC		With Manual Override		
FPM Seats	16	H1 DKB 305	461.43	
	20	H1 DKB 306	462.85	
PTFE Seats	25	H1 DKB 307	473.56	
	32	H1 DKB 308	493.13	
	40	H1 DKB 309	513.71	
	50	H1 DKB 310	551.23	
	63	H1 DKB 311	605.38	
	75	H1 DKB 312	988.32	
	90	H1 DKB 313	1079.96	
	110	H1 DKB 314	1238.28	

BSP Female Threaded

240v / 110v		With Manual Override		
EPDM Seats	1/2	H1 DKA B02	461.02	
	3/4	H1 DKA B03	473.15	
PTFE Seats	1	H1 DKA B04	484.17	
	1 1/4	H1 DKA B05	516.39	
	1 1/2	H1 DKA B06	548.37	
	2	H1 DKA B07	593.66	

BSP Female Threaded

240v / 110v AC		With Manual Override		
FPM Seats	1/2	H1 DKB B02	473.98	
	3/4	H1 DKB B03	488.40	
PTFE Seats	1	H1 DKB B04	513.12	
	1 1/4	H1 DKB B05	539.73	
	1 1/2	H1 DKB B06	579.43	
	2	H1 DKB B07	643.63	

For 24v AC / 24v DC Prefix part number H2 (e.g. H2 DKA 101)
 Prices are as 240v / 110v AC.
 Optional 2" / 63mm and 4" / 110mm 16 bar
 Prices on request

Durapipe VKD Pneumatically Actuated Ball Valve

Description: In-line ball valve with pneumatic operation

Mounting: In any position

Maximum Fluid Pressure at 20°C: 16 bar

Fluid Temperature Range: -40°C to 70°C

Construction:

Body: ABS

Seals: EPDM or FPM

Seats: PTFE

End Connections: Solvent Sockets, BSP Female Threaded

Actuation:

Housing Material: Glass filled polyamid (nylon)

Air Actuators: Fail-safe close, fail-safe open, double acting **Protection:** IP65

Ambient Temperature Range: -10°C to 70°C

Manual Override: Included **Position Indicator:** Included **Contacts:** Optional

Pilot Valve: Solenoid, not included **Options:** Limit switches



Valve shown with optional limit switches

Inch Solvent Cement Sockets

Fail-Safe Close			
	3/8	HP DKA 101	268.78
EPDM Seals	1/2	HP DKA 102	270.87
PTFE Seats	3/4	HP DKA 103	278.35
	1	HP DKA 104	291.13
	1 1/4	HP DKA 105	313.38
	1 1/2	HP DKA 106	370.85
	2	HP DKA 107	406.32
	2 1/2	HP DKA 312	709.31
	3	HP DKA 109	788.04
	4	HP DKA 110	967.61

Inch Solvent Cement Sockets

Fail-Safe Close			
	3/8	HP DKB 101	281.17
FPM Seals	1/2	HP DKB 102	282.60
PTFE Seats	3/4	HP DKB 103	293.31
	1	HP DKB 104	340.52
	1 1/4	HP DKB 105	333.45
	1 1/2	HP DKB 106	399.82
	2	HP DKB 107	453.29
	2 1/2	HP DKB 312	825.95
	3	HP DKB 109	917.60
	4	HP DKB 110	1075.93

MM Solvent Cement Sockets

Fail-Safe Close			
	16	HP DKA 305	268.78
EPDM Seals	20	HP DKA 306	270.87
PTFE Seats	25	HP DKA 307	278.35
	32	HP DKA 308	291.13
	40	HP DKA 309	315.56
	50	HP DKA 310	519.42
	63	HP DKA 311	406.32
	75	HP DKA 312	709.31
	90	HP DKA 313	800.97
	110	HP DKA 314	967.61

MM Solvent Cement Sockets

Fail-Safe Close			
	16	HP DKB 305	281.17
FPM Seals	20	HP DKB 306	282.60
PTFE Seats	25	HP DKB 307	293.31
	32	HP DKB 308	312.88
	40	HP DKB 309	333.45
	50	HP DKB 310	398.12
	63	HP DKB 311	453.97
	75	HP DKB 312	825.95
	90	HP DKB 313	917.60
	110	HP DKB 314	1075.93

Inch Solvent Cement Sockets

Double Acting			
	3/8	HR DKA 101	268.78
EPDM Seals	1/2	HR DKA 102	270.87
PTFE Seats	3/4	HR DKA 103	281.17
	1	HR DKA 104	291.13
	1 1/4	HR DKA 105	315.56
	1 1/2	HR DKA 106	344.19
	2	HR DKA 107	406.30
	2 1/2	HR DKA 312	586.75
	3	HR DKA 109	698.19
	4	HR DKA 110	967.61

Inch Solvent Cement Sockets

Double Acting			
	3/8	HR DKB 101	281.17
FPM Seals	1/2	HR DKB 102	282.60
PTFE Seats	3/4	HR DKB 103	293.31
	1	HR DKB 104	312.88
	1 1/4	HR DKB 105	333.45
	1 1/2	HR DKB 106	370.98
	2	HR DKB 107	453.97
	2 1/2	HR DKB 312	703.39
	3	HR DKB 109	917.60
	4	HR DKB 110	1075.93

MM Solvent Cement Sockets

Double Acting			
	16	HR DKA 305	268.78
EPDM Seals	20	HR DKA 306	270.87
PTFE Seats	25	HR DKA 307	281.17
	32	HR DKA 308	293.73
	40	HR DKA 309	315.56
	50	HR DKA 310	342.54
	63	HR DKA 311	406.32
	75	HR DKA 312	586.75
	90	HR DKA 313	800.97
	110	HR DKA 314	967.61

MM Solvent Cement Sockets

Double Acting			
	16	HR DKB 305	281.17
FPM Seals	20	HR DKB 306	282.60
PTFE Seats	25	HR DKB 307	293.31
	32	HR DKB 308	312.88
	40	HR DKB 309	333.45
	50	HR DKB 310	370.98
	63	HR DKB 311	453.97
	75	HR DKB 312	703.39
	90	HR DKB 313	917.60
	110	HR DKB 314	1075.93

Also available with:

Fail-safe open actuator. Prefix Part Number HQ (e.g. HQ DKA 101)

Prices are as fail-safe closed

Durapipe VKD Pneumatically Actuated Ball Valve

Description: In-line ball valve with pneumatic operation and limit switches

Mounting: In any position

Maximum Fluid Pressure at 20°C: 16 bar

Fluid Temperature Range: -40°C to 70°C

Construction:

Body: ABS **Seals:** EPDM or FPM **Seats:** PTFE

End Connections: Solvent Sockets, BSP Female Threaded

Actuation:

Housing Material: Glass filled polyamid (nylon)

Air Actuators: Fail-safe close, fail-safe open, double acting **Protection:** IP65

Ambient Temperature Range: -10°C to 70°C **Manual Override:** Included

Position Indicator: Included

Contacts: Included **Pilot Valve:** Solenoid, not included



Inch Solvent Cement Sockets

With Limit Switches

Fail-Safe Close			
EPDM Seals	3/8	HS DKA 101	368.93
	1/2	HS DKA 102	366.12
PTFE Seats	3/4	HS DKA 103	381.31
	1	HS DKA 104	389.39
	1 1/4	HS DKA 105	411.65
	1 1/2	HS DKA 106	483.86
	2	HS DKA 107	504.57
	2 1/2	HS DKA 312	809.44
	3	HS DKA 109	901.11
	4	HS DKA 110	1067.75

Inch Solvent Cement Sockets

With Limit Switches

Fail-Safe Close			
FPM Seals	3/8	HS DKB 101	381.31
	1/2	HS DKB 102	382.73
PTFE Seats	3/4	HS DKB 103	393.45
	1	HS DKB 104	413.02
	1 1/4	HS DKB 105	433.60
	1 1/2	HS DKB 106	499.96
	2	HS DKB 107	554.11
	2 1/2	HS DKB 312	926.09
	3	HS DKB 109	1017.74
	4	HS DKB 110	1176.06

MM Solvent Cement Sockets

With Limit Switches

Fail-Safe Close			
EPDM Seals	16	HS DKA 305	363.99
	20	HS DKA 306	371.01
PTFE Seats	25	HS DKA 307	381.31
	32	HS DKA 308	389.39
	40	HS DKA 309	415.71
	50	HS DKA 310	469.10
	63	HS DKA 311	504.57
	75	HS DKA 312	809.44
	90	HS DKA 313	901.11
	110	HS DKA 314	1067.75

MM Solvent Cement Sockets

With Limit Switches

Fail-Safe Close			
FPM Seals	16	HS DKB 305	381.31
	20	HS DKB 306	382.73
PTFE Seats	25	HS DKB 307	393.45
	32	HS DKB 308	413.02
	40	HS DKB 309	433.60
	50	HS DKB 310	499.96
	63	HS DKB 311	554.11
	75	HS DKB 312	926.09
	90	HS DKB 313	1017.74
	110	HS DKB 314	1176.06

Inch Solvent Cement Sockets

With Limit Switches

Double Acting			
EPDM Seals	3/8	HU DKA 101	368.93
	1/2	HU DKA 102	371.01
PTFE Seats	3/4	HU DKA 103	381.31
	1	HU DKA 104	392.30
	1 1/4	HU DKA 105	415.71
	1 1/2	HU DKA 106	444.33
	2	HU DKA 107	507.99
	2 1/2	HU DKA 312	686.88
	3	HU DKA 109	901.11
	4	HU DKA 110	1067.75

Inch Solvent Cement Sockets

With Limit Switches

Double Acting			
FPM Seals	3/8	HU DKB 101	381.31
	1/2	HU DKB 102	382.73
PTFE Seats	3/4	HU DKB 103	393.45
	1	HU DKB 104	413.02
	1 1/4	HU DKB 105	433.60
	1 1/2	HU DKB 106	471.11
	2	HU DKB 107	554.11
	2 1/2	HU DKB 312	803.53
	3	HU DKB 109	1017.74
	4	HU DKB 110	1176.06

MM Solvent Cement Sockets

With Limit Switches

Double Acting			
EPDM Seals	16	HU DKA 305	368.93
	20	HU DKA 306	371.01
PTFE Seats	25	HU DKA 307	381.31
	32	HU DKA 308	393.86
	40	HU DKA 309	415.71
	50	HU DKA 310	444.33
	63	HU DKA 311	507.99
	75	HU DKA 312	686.88
	90	HU DKA 313	787.25
	110	HU DKA 314	1067.75

MM Solvent Cement Sockets

With Limit Switches

Double Acting			
FPM Seals	16	HU DKB 305	381.31
	20	HU DKB 306	382.73
PTFE Seats	25	HU DKB 307	393.45
	32	HU DKB 308	413.02
	40	HU DKB 309	433.60
	50	HU DKB 310	471.11
	63	HU DKB 311	554.11
	75	HU DKB 312	803.53
	90	HU DKB 313	1017.74
	110	HU DKB 314	1176.06

Also available with:

Fail-safe open actuator. Prefix Part Number HT (e.g. HT DKA 101)

Prices are as fail-safe closed

Durapipe FK Electrically Actuated Butterfly Valve

Description: Wafer style butterfly valve with electric actuation

Mounting: In any position, between flanges to BS4504 PN10; BS10 table D/E or ANSI 150

Maximum Fluid Pressure at 20°C: 10 bar

Fluid Temperature Range: -10°C to 55°C

Construction:

Body: Glass reinforced polypropylene **Disc:** ABS **Seals:** EPDM, FPM or NBR

End Connections: Flange mounted (flanges not included)

Actuation:

Housing Material: ABS cover, glass filled nylon housing

Voltages: 240v AC / 110v AC (Auto Sensing); 24v AC; 24v DC (Auto Sensing)

Frequency Range: 50/60 Hz

Protection: IP65

Ambient Temperature Range: -10°C to 55°C **Manual Override:** Included

Position Indicator: Included

Contacts: Open, closed **Options:** 10W anti-condensation heater; 4.7 Kohmms potentiometer; 4 to 20ma or 0 to 10v proportional control; fail safe battery back-up



Flange Mounted

With Manual Override

240v / 110v AC
EPDM Seals

1 ^{1/2} /50	H1 FKA 106	555.74
2/63	H1 FKA 107	564.88
2 ^{1/2} /75	H1 FKA 108	582.15
3/90	H1 FKA 109	761.76
4/110	H1 FKA 110	777.79
5/140	H1 FKA 111	1124.55
6/160	H1 FKA 112	1199.73
8/225	H1 FKA 113	1458.19
10/250	H1 FKA 114	2710.22
12/315	H1 FKA 115	2832.68

Flange Mounted

With Manual Override

240v / 110v AC
FPM Seals

1 ^{1/2} /50	H1 FKB 106	594.32
2/63	H1 FKB 107	606.11
2 ^{1/2} /75	H1 FKB 108	629.27
3/90	H1 FKB 109	774.09
4/110	H1 FKB 110	821.48
5/140	H1 FKB 111	1163.67
6/160	H1 FKB 112	1247.09
8/225	H1 FKB 113	1520.81
10/250	H1 FKB 114	3810.94
12/315	H1 FKB 115	4030.59

Flange Mounted

With Manual Override

24v AC/ DC
EPDM Seals

1 ^{1/2} /50	H2 FKA 106	560.09
2/63	H2 FKA 107	569.08
2 ^{1/2} /75	H2 FKA 108	586.02
3/90	H2 FKA 109	738.88
4/110	H2 FKA 110	782.98
5/140	H2 FKA 111	1124.55
6/160	H2 FKA 112	1199.73
8/225	H2 FKA 113	1463.14
10/250	H2 FKA 114	2710.22
12/315	H2 FKA 115	2832.68

Flange Mounted

With Manual Override

24v AC/ DC
FPM Seals

1 ^{1/2} /50	H2 FKB 106	594.32
2/63	H2 FKB 107	606.11
2 ^{1/2} /75	H2 FKB 108	629.27
3/90	H2 FKB 109	774.09
4/110	H2 FKB 110	821.48
5/140	H2 FKB 111	1163.67
6/160	H2 FKB 112	1247.09
8/225	H2 FKB 113	1520.81
10/250	H2 FKB 114	3810.94
12/315	H2 FKB 115	4030.59

Need advice?

Our expert team are here to help.
Call our freephone:

0800 975 79 71

Or from outside of the UK:
+44 191 521 3111



Durapipe FK Pneumatically Actuated Butterfly Valve

Description: Wafer style butterfly valve with pneumatic actuation

Mounting: In any position, between flanges to BS4504 PN10; BS10 table D/E or ANSI 150

Maximum Fluid Pressure at 20°C: 10 bar

Fluid Temperature Range: -10°C to 55°C

Construction:

Body: Glass reinforced polypropylene **Disc:** ABS **Seals:** EPDM, FPM or NBR

End Connections: Flange mounted (flanges not included)

Actuation:

Housing Material: Glass filled polyamid (nylon)

Air Actuators: Fail-safe close, fail-safe open, double acting

Protection: IP65

Ambient Temperature Range: -10°C to 70°C **Manual Override:** Included

Position Indicator: Included

Contacts: Optional **Pilot Valve:** Solenoid, not included **Options:** Limit switches



Valve shown with optional limit switches

Flange Mounted

Fail Safe Close
EPDM Seals

1 1/2/50	HP FKA 106	408.70
2/63	HP FKA 107	417.66
2 1/2/75	HP FKA 108	434.61
3/90	HP FKA 109	811.98
4/110	HP FKA 110	559.69
5/140	HP FKA 111	772.49
6/160	HP FKA 112	849.07
8/225	HP FKA 113	1046.56
10/250	HP FKA 114	2754.07
12/315	HP FKA 115	2876.53

Flange Mounted

Fail Safe Close
FPM Seals

1 1/2/50	HP FKB 106	442.92
2/63	HP FKB 107	454.71
2 1/2/75	HP FKB 108	477.85
3/90	HP FKB 109	584.50
4/110	HP FKB 110	631.89
5/140	HP FKB 111	813.84
6/160	HP FKB 112	897.27
8/225	HP FKB 113	1104.24
10/250	HP FKB 114	3854.80
12/315	HP FKB 115	4074.45

Flange Mounted

Fail Safe Open
EPDM Seals

1 1/2/50	HQ FKA 106	408.70
2/63	HQ FKA 107	417.66
2 1/2/75	HQ FKA 108	434.61
3/90	HQ FKA 109	549.28
4/110	HQ FKA 110	593.39
5/140	HQ FKA 111	774.72
6/160	HQ FKA 112	849.90
8/225	HQ FKA 113	1046.56
10/250	HQ FKA 114	2754.07
12/315	HQ FKA 115	2876.53

Flange Mounted

Fail Safe Open
FPM Seals

1 1/2/50	HQ FKB 106	442.92
2/63	HQ FKB 107	454.71
2 1/2/75	HQ FKB 108	477.85
3/90	HQ FKB 109	584.50
4/110	HQ FKB 110	631.89
5/140	HQ FKB 111	813.84
6/160	HQ FKB 112	897.27
8/225	HQ FKB 113	1104.24
10/250	HQ FKB 114	3854.80
12/315	HQ FKB 115	4074.45

Flange Mounted

Double Acting
EPDM Seals

1 1/2/50	HR FKA 106	408.70
2/63	HR FKA 107	471.67
2 1/2/75	HR FKA 108	434.61
3/90	HR FKA 109	549.28
4/110	HR FKA 110	514.45
5/140	HR FKA 111	667.92
6/160	HR FKA 112	743.10
8/225	HR FKA 113	979.80
10/250	HR FKA 114	2481.70
12/315	HR FKA 115	2604.17

Flange Mounted

Double Acting
FPM Seals

1 1/2/50	HR FKB 106	442.92
2/63	HR FKB 107	454.71
2 1/2/75	HR FKB 108	477.85
3/90	HR FKB 109	584.50
4/110	HR FKB 110	631.89
5/140	HR FKB 111	707.03
6/160	HR FKB 112	790.45
8/225	HR FKB 113	1037.48
10/250	HR FKB 114	3582.43
12/315	HR FKB 115	3802.08

Durapipe FK Pneumatically Actuated Butterfly Valve

Description: Wafer style butterfly valve with pneumatic actuation and limit switches

Mounting: In any position, between flanges to BS4504 PN10; BS10 table D/E or ANSI 150

Maximum Fluid Pressure at 20°C: 10 bar

Fluid Temperature Range: -10°C to 55°C

Construction:

Body: Glass reinforced polypropylene **Disc:** ABS **Seals:** EPDM, FPM or NBR

End Connections: Flange mounted (flanges not included)

Actuation:

Housing Material: Glass filled polyamid (nylon)

Air Actuators: Fail-safe close, fail-safe open, double acting

Protection: IP65

Ambient Temperature Range: -10°C to 70°C **Manual Override:** Included

Position Indicator: Included

Contacts: Included **Pilot Valve:** Solenoid, not included



Flange Mounted
With Limit Switches

Fail Safe Close EPDM Seals	1 1/2/50	HS FKA 106	508.84
	2/63	HS FKA 107	517.81
	2 1/2/75	HS FKA 108	534.75
	3/90	HS FKA 109	913.13
	4/110	HS FKA 110	1144.87
	5/140	HS FKA 111	874.86
	6/160	HS FKA 112	950.04
	8/225	HS FKA 113	1146.70
	10/250	HS FKA 114	2833.53
	12/315	HS FKA 115	2955.99

Flange Mounted
With Limit Switches

Fail Safe Close FPM Seals	1 1/2/50	HS FKB 106	543.06
	2/63	HS FKB 107	554.85
	2 1/2/75	HS FKB 108	577.99
	3/90	HS FKB 109	684.64
	4/110	HS FKB 110	732.03
	5/140	HS FKB 111	913.98
	6/160	HS FKB 112	997.41
	8/225	HS FKB 113	1204.38
	10/250	HS FKB 114	3934.24
	12/315	HS FKB 115	4153.90

Flange Mounted
With Limit Switches

Fail Safe Open EPDM Seals	1 1/2/50	HT FKA 106	508.84
	2/63	HT FKA 107	517.81
	2 1/2/75	HT FKA 108	534.75
	3/90	HT FKA 109	913.13
	4/110	HT FKA 110	1144.87
	5/140	HT FKA 111	874.86
	6/160	HT FKA 112	950.04
	8/225	HT FKA 113	1146.70
	10/250	HT FKA 114	2833.53
	12/315	HT FKA 115	2955.99

Flange Mounted
With Limit Switches

Fail Safe Open FPM Seals	1 1/2/50	HT FKB 106	543.06
	2/63	HT FKB 107	554.85
	2 1/2/75	HT FKB 108	577.99
	3/90	HT FKB 109	684.64
	4/110	HT FKB 110	732.03
	5/140	HT FKB 111	913.98
	6/160	HT FKB 112	997.41
	8/225	HT FKB 113	1204.38
	10/250	HT FKB 114	3934.24
	12/315	HT FKB 115	4153.90

Flange Mounted
With Limit Switches

Double Acting EPDM Seals	1 1/2/50	HU FKA 106	508.84
	2/63	HU FKA 107	517.81
	2 1/2/75	HU FKA 108	534.75
	3/90	HU FKA 109	649.42
	4/110	HU FKA 110	693.53
	5/140	HU FKA 111	768.06
	6/160	HU FKA 112	843.23
	8/225	HU FKA 113	1079.94
	10/250	HU FKA 114	2583.85
	12/315	HU FKA 115	2706.31

Flange Mounted
With Limit Switches

Double Acting FPM Seals	1 1/2/50	HU FKB 106	543.06
	2/63	HU FKB 107	554.85
	2 1/2/75	HU FKB 108	577.99
	3/90	HU FKB 109	684.64
	4/110	HU FKB 110	732.03
	5/140	HU FKB 111	807.18
	6/160	HU FKB 112	890.58
	8/225	HU FKB 113	1137.62
	10/250	HU FKB 114	3684.58
	12/315	HU FKB 115	3904.23

Durapipe VM Pneumatically Actuated Diaphragm Valve

Description: In-line pneumatically operated diaphragm valve

Mounting: In any position

Maximum Fluid Pressure at 20°C: Sizes up to 2"/63mm - 10 bar;
sizes 2 1/2"/75mm to 4"/110mm - 6 bar

Fluid Temperature Range: -40°C to 70°C

Construction:

Body: ABS

Diaphragm: EPDM, FPM or PTFE

End Connections: Solvent Spigots

Actuation:

Housing Material: Glass reinforced polypropylene

Air Actuators: Fail-safe close, fail-safe open, double acting **Protection:** IP65

Manual Override: Optional **Position Indicator:** Optional

Control Fluid Temperature: Maximum 40°C **Contacts:** Optional

Pilot Valve: Solenoid, not included

Options: Stroke limiter; position indicator (optical or electronic); manual override



Inch Solvent Cement Spigots			
Fail-Safe Close EPDM Diaphragm	1/2	HP VMA 202	249.55
	3/4	HP VMA 203	264.37
	1	HP VMA 204	287.70
	1 1/4	HP VMA 205	374.21
	1 1/2	HP VMA 206	422.49
	2	HP VMA 207	525.81
	2 1/2	HP VMA 208	818.36
	4	HP VMA 210	2139.43

Inch Solvent Cement Spigots			
Fail-Safe Close FPM Diaphragm	1/2	HP VMB 202	276.51
	3/4	HP VMB 203	294.59
	1	HP VMB 204	318.39
	1 1/4	HP VMB 205	413.95
	1 1/2	HP VMB 206	469.31
	2	HP VMB 207	587.17
	2 1/2	HP VMB 208	938.56
	4	HP VMB 210	2433.49

MM Solvent Cement Spigots			
Fail-Safe Close EPDM Diaphragm	20	HP VMA 406	251.38
	25	HP VMA 407	265.93
	32	HP VMA 408	287.70
	40	HP VMA 409	376.07
	50	HP VMA 410	422.49
	63	HP VMA 411	527.22
	75	HP VMA 412	859.03
	90	HP VMA 413	1273.61
	110	HP VMA 414	2121.42

MM Solvent Cement Spigots			
Fail-Safe Close FPM Diaphragm	20	HP VMB 406	276.51
	25	HP VMB 407	294.59
	32	HP VMB 408	318.37
	40	HP VMB 409	413.96
	50	HP VMB 410	469.31
	63	HP VMB 411	587.17
	75	HP VMB 412	954.04
	90	HP VMB 413	1390.32
	110	HP VMB 414	2410.09

Inch Solvent Cement Spigots			
Double Acting EPDM Diaphragm	1/2	HR VMA 202	148.37
	3/4	HR VMA 203	163.19
	1	HR VMA 204	186.54
	1 1/4	HR VMA 205	241.91
	1 1/2	HR VMA 206	290.18
	2	HR VMA 207	331.25
	2 1/2	HR VMA 208	478.59
	4	HR VMA 210	1688.04

Inch Solvent Cement Spigots			
Double Acting FPM Diaphragm	1/2	HR VMB 202	173.40
	3/4	HR VMB 203	191.49
	1	HR VMB 204	215.27
	1 1/4	HR VMB 205	279.13
	1 1/2	HR VMB 206	334.48
	2	HR VMB 207	388.90
	2 1/2	HR VMB 208	598.80
	4	HR VMB 210	1982.10

MM Solvent Cement Spigots			
Double Acting EPDM Diaphragm	20	HR VMA 406	148.28
	25	HR VMA 407	162.81
	32	HR VMA 408	185.73
	40	HR VMA 409	241.25
	50	HR VMA 410	288.62
	63	HR VMA 411	328.95
	75	HR VMA 412	526.17
	90	HR VMA 413	758.01
	110	HR VMA 414	1661.44

MM Solvent Cement Spigots			
Double Acting FPM Diaphragm	20	HR VMB 406	173.40
	25	HR VMB 407	191.49
	32	HR VMB 408	215.27
	40	HR VMB 409	279.14
	50	HR VMB 410	334.48
	63	HR VMB 411	388.90
	75	HR VMB 412	620.94
	90	HR VMB 413	874.80
	110	HR VMB 414	1950.10

Also available with:

Fail-safe open actuator. Prefix Part Number HQ (e.g. HQ VMA 202)

Prices are as Double Acting

Durapipe VM Pneumatically Actuated Diaphragm Valve

Description: In-line pneumatically operated diaphragm valve with limit switches

Mounting: In any position

Maximum Fluid Pressure at 20°C: Sizes up to 2"/63mm - 10 bar;
sizes 2 1/2"/75mm to 4"/110mm - 6 bar

Fluid Temperature Range: -40°C to 70°C

Construction:

Body: ABS

Diaphragm: EPDM, FPM or PTFE

End Connections: Solvent Spigots

Actuation:

Housing Material: Glass reinforced polypropylene

Air Actuators: Fail-safe close, fail-safe open, double acting **Protection:** IP65

Manual Override: Optional **Position Indicator:** Optional

Control Fluid Temperature: Maximum 40°C **Contacts:** Included

Pilot Valve: Solenoid, not included

Options: Stroke limiter; position indicator (optical or electronic); manual override



Inch Solvent Cement Spigots

With Limit Switches

Fail-Safe Close
EPDM Diaphragm

1/2	HS VMA 202	354.48
3/4	HS VMA 203	369.02
1	HS VMA 204	388.88
1 1/4	HS VMA 205	479.19
1 1/2	HS VMA 206	523.66
2	HS VMA 207	627.55
2 1/2	HS VMA 208	953.39
3	HS VMA 209	1376.62
4	HS VMA 210	1665.26

Inch Solvent Cement Spigots

With Limit Switches

Fail-Safe Close
FPM Diaphragm

1/2	HS VMB 202	379.60
3/4	HS VMB 203	397.69
1	HS VMB 204	421.47
1 1/4	HS VMB 205	517.07
1 1/2	HS VMB 206	572.41
2	HS VMB 207	690.28
2 1/2	HS VMB 208	1043.72
3	HS VMB 209	1493.40
4	HS VMB 210	2513.21

MM Solvent Cement Spigots

With Limit Switches

Fail-Safe Close
EPDM Diaphragm

20	HS VMA 406	354.48
25	HS VMA 407	369.02
32	HS VMA 408	391.93
40	HS VMA 409	479.19
50	HS VMA 410	526.55
63	HS VMA 411	630.33
75	HS VMA 412	962.37
90	HS VMA 413	1376.62
110	HS VMA 414	2224.54

MM Solvent Cement Spigots

With Limit Switches

Fail-Safe Close
FPM Diaphragm

20	HS VMB 406	379.60
25	HS VMB 407	397.69
32	HS VMB 408	421.47
40	HS VMB 409	517.07
50	HS VMB 410	572.41
63	HS VMB 411	690.28
75	HS VMB 412	1057.14
90	HS VMB 413	1493.40
110	HS VMB 414	2513.21

Inch Solvent Cement Spigots

With Limit Switches

Double Acting
EPDM Diaphragm

1/2	HU VMA 202	251.39
3/4	HU VMA 203	265.92
1	HU VMA 204	288.83
1 1/4	HU VMA 205	344.36
1 1/2	HU VMA 206	391.73
2	HU VMA 207	432.06
2 1/2	HU VMA 208	613.65
3	HU VMA 209	868.91
4	HU VMA 210	1764.54

Inch Solvent Cement Spigots

With Limit Switches

Double Acting
FPM Diaphragm

1/2	HU VMB 202	276.51
3/4	HU VMB 203	294.58
1	HU VMB 204	318.37
1 1/4	HU VMB 205	382.25
1 1/2	HU VMB 206	437.59
2	HU VMB 207	492.01
2 1/2	HU VMB 208	703.97
3	HU VMB 209	977.89
4	HU VMB 210	2053.20

MM Solvent Cement Spigots

With Limit Switches

Double Acting
EPDM Diaphragm

20	HU VMA 406	251.39
25	HU VMA 407	265.92
32	HU VMA 408	288.83
40	HU VMA 409	344.36
50	HU VMA 410	391.73
63	HU VMA 411	432.06
75	HU VMA 412	629.29
90	HU VMA 413	861.11
110	HU VMA 414	1764.54

MM Solvent Cement Spigots

With Limit Switches

Double Acting
FPM Diaphragm

20	HU VMB 406	276.51
25	HU VMB 407	294.58
32	HU VMB 408	318.37
40	HU VMB 409	382.25
50	HU VMB 410	437.59
63	HU VMB 411	492.01
75	HU VMB 412	724.05
90	HU VMB 413	977.89
110	HU VMB 414	2053.20

Also available with:

Fail-safe open actuator. Prefix Part Number HT (e.g. HT VMA 202)

Prices are as Double Acting